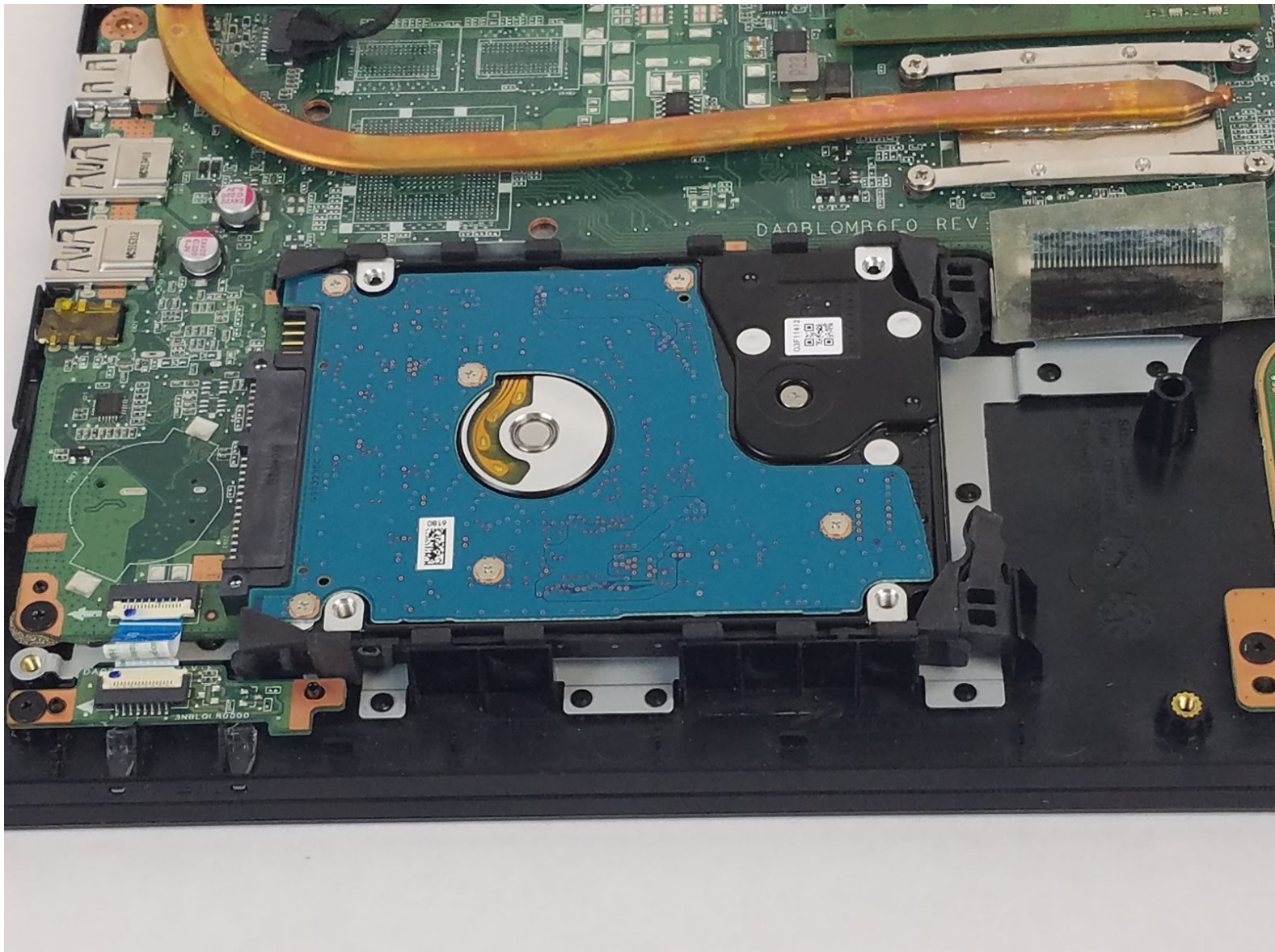




Toshiba Satellite C55-C5240 Hard Drive Replacement

This guide will explain how to remove the hard drive.

Written By: Abdel Feliciano Gonzalez



INTRODUCTION

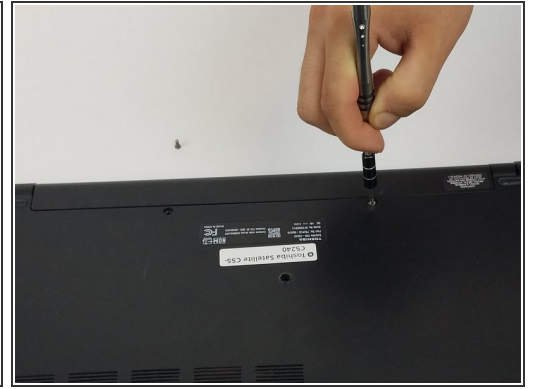
Whether or not you are upgrading your storage or the hard drive is out of commission, this guide will help you remove it.




TOOLS:

- [iFixit Opening Tools](#) (1)
 - [Phillips #1 Screwdriver](#) (1)
-

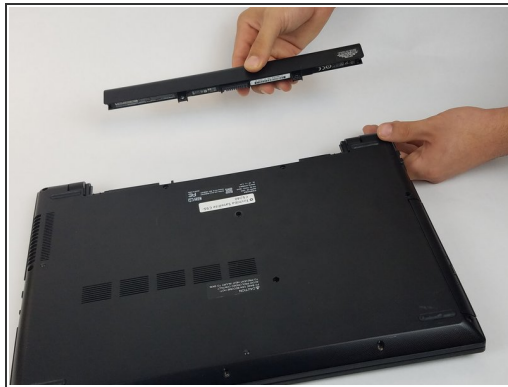
Step 1 — Battery



 Make sure you turn off the laptop before starting.

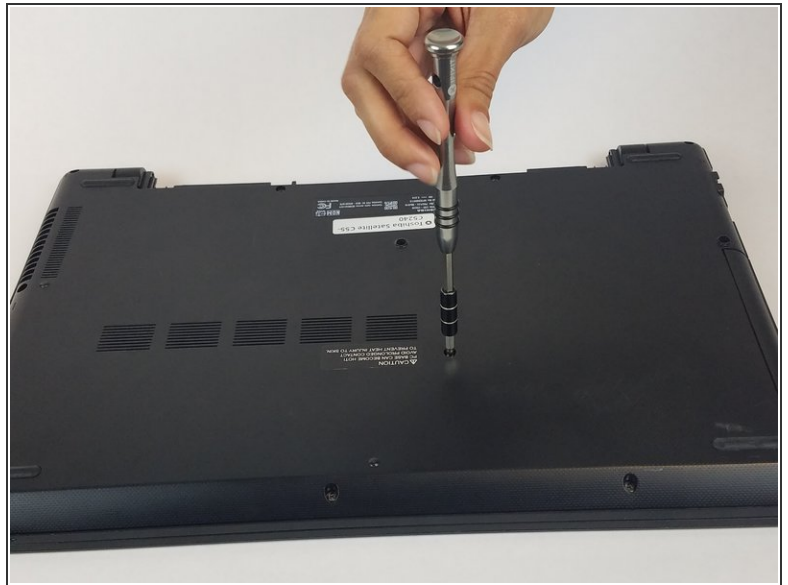
- Remove the two 6.5mm PH1 Phillips screws securing the battery.

Step 2



- Pull the battery out, keeping it flat and parallel to the laptop so that it slides out easily.

Step 3 — Back cover



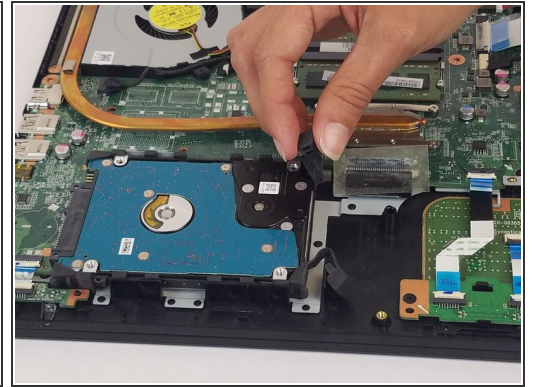
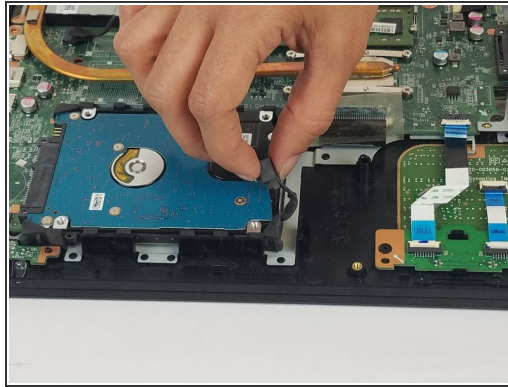
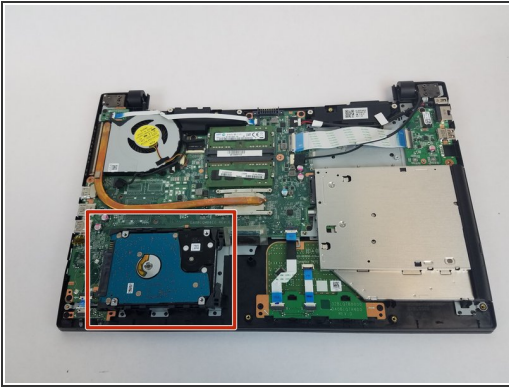
- Unscrew the ten 6.5mm PH1 Phillips head screws that hold down the back cover.

Step 4



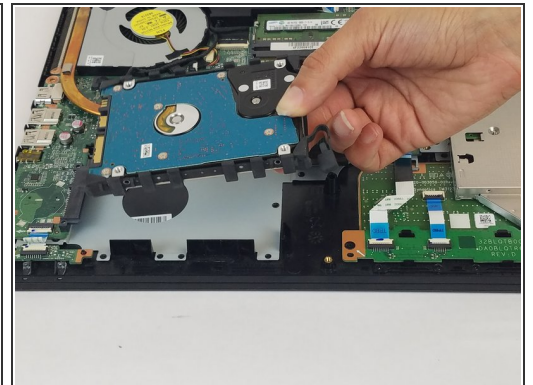
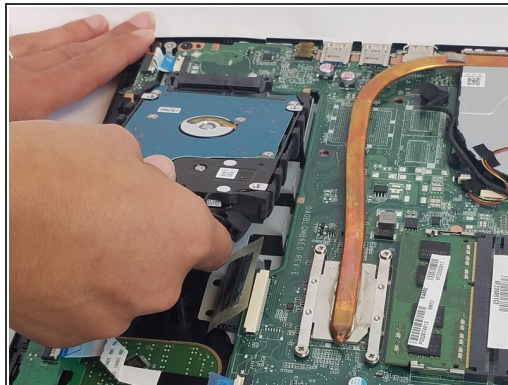
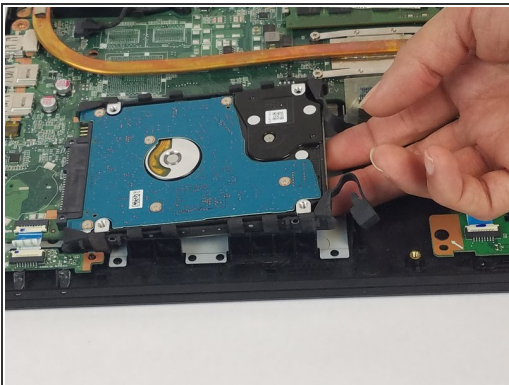
- Using the plastic opening tools, open the back cover and remove it from the laptop.
- ⓘ It is recommended that you start from a corner and run the tool along the edge of the cover.
- ⚠ Be careful not to bend or crack the cover.

Step 5 — Hard Drive



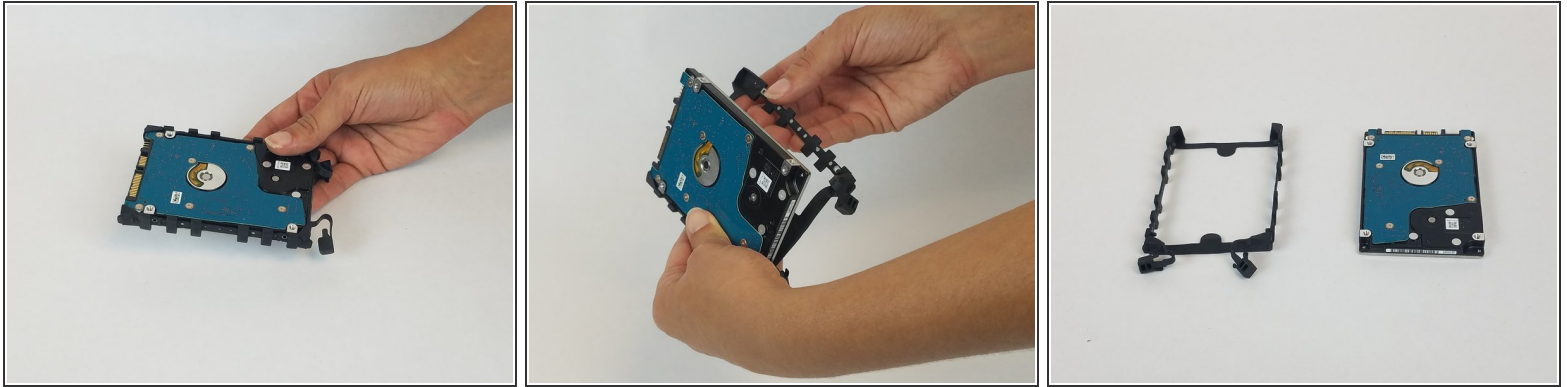
- The hard drive is on the bottom left side.
- Remove both releases from the rubber hard drive mount.

Step 6



- Lift the hard drive from underneath on the right side.
- While holding it up, pull it away from its connector so that it disconnects.

Step 7



- Peel off the rubber hard drive mount.

To reassemble your device, follow these instructions in reverse order.