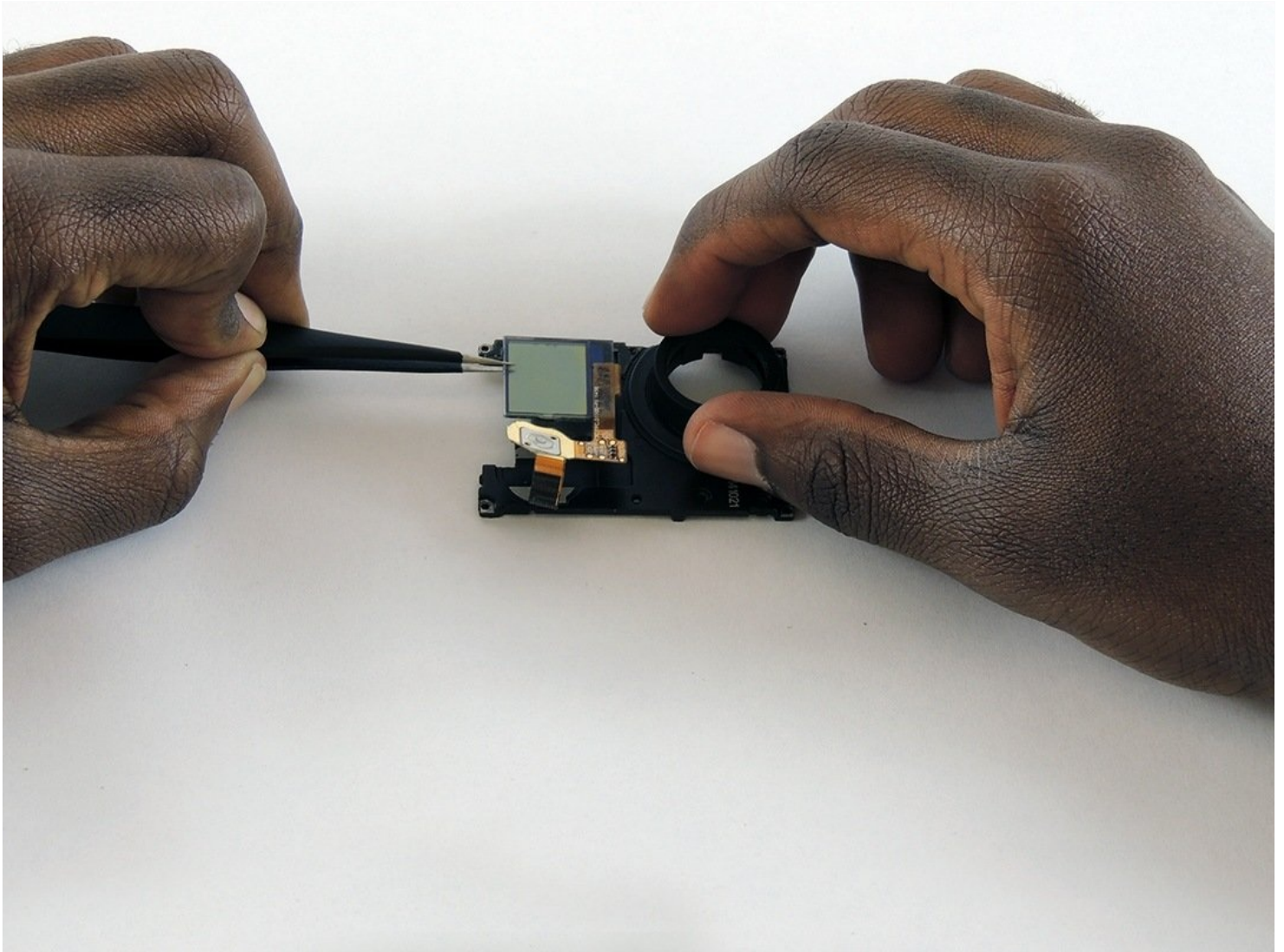




GoPro Hero4 Black LCD Screen Replacement

Written By: Jeffrey Goethe



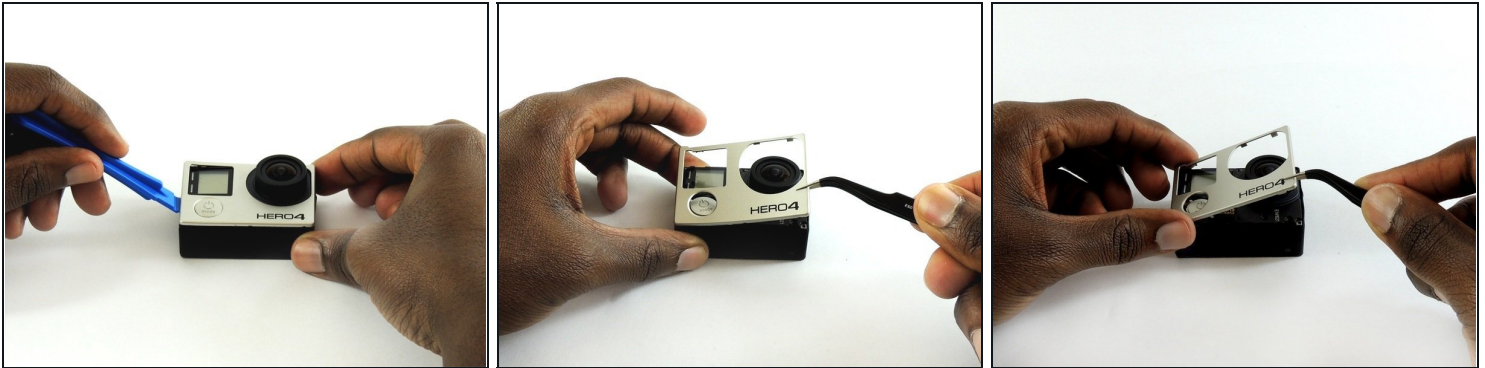
TOOLS:


Metal Spudger (1)
Phillips #00 Screwdriver (1)
iFixit Opening Tool (1)
Tweezers (1)
iOpener (1)

PARTS:

GoPro Hero4 Black LCD & Midframe Assembly (1)
GoPro Hero4 LCD Assembly (1)

Step 1 — Midframe Housing



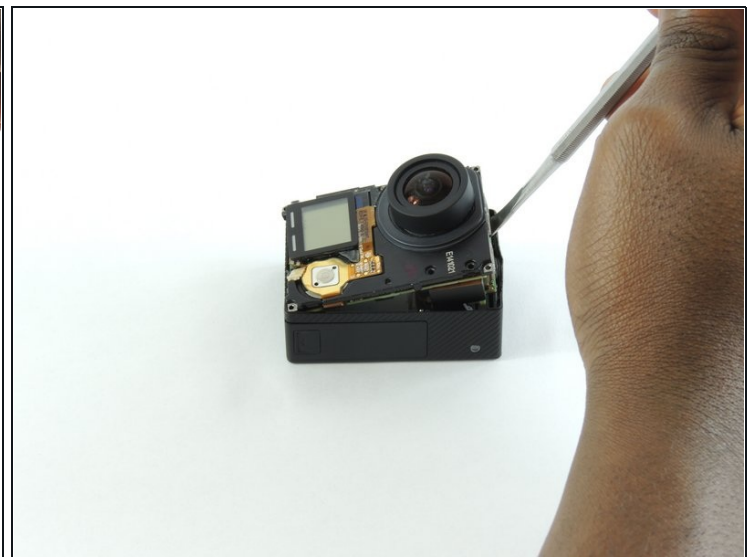
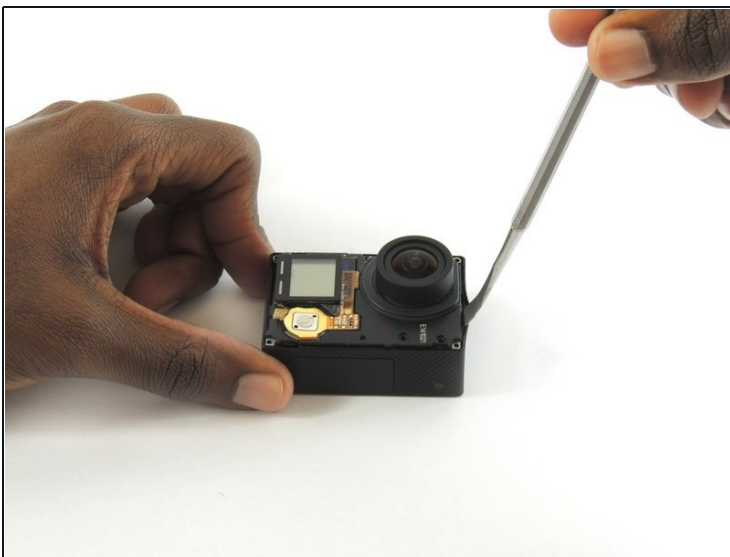
- Remove the faceplate by carefully prying around the edge using a plastic opening tool. Loosen the clips on the edge, then pull the faceplate off.
 - Use the [tweezers](#) to lift the faceplate from the rest of the device.
-  The power button on the front of the GoPro may pop off. Ensure to align it properly during reassembly.

Step 2



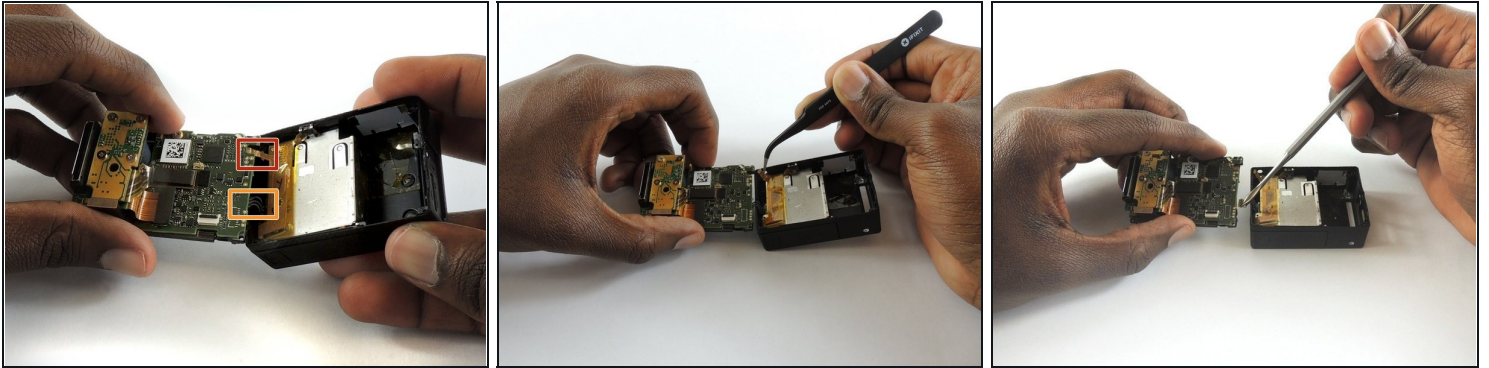
- Using a #00 Phillips head screwdriver, remove the following screws:
 - One 4.6 mm screw
 - Three 8.2 mm screws
 - Two 6.1 mm screws

Step 3



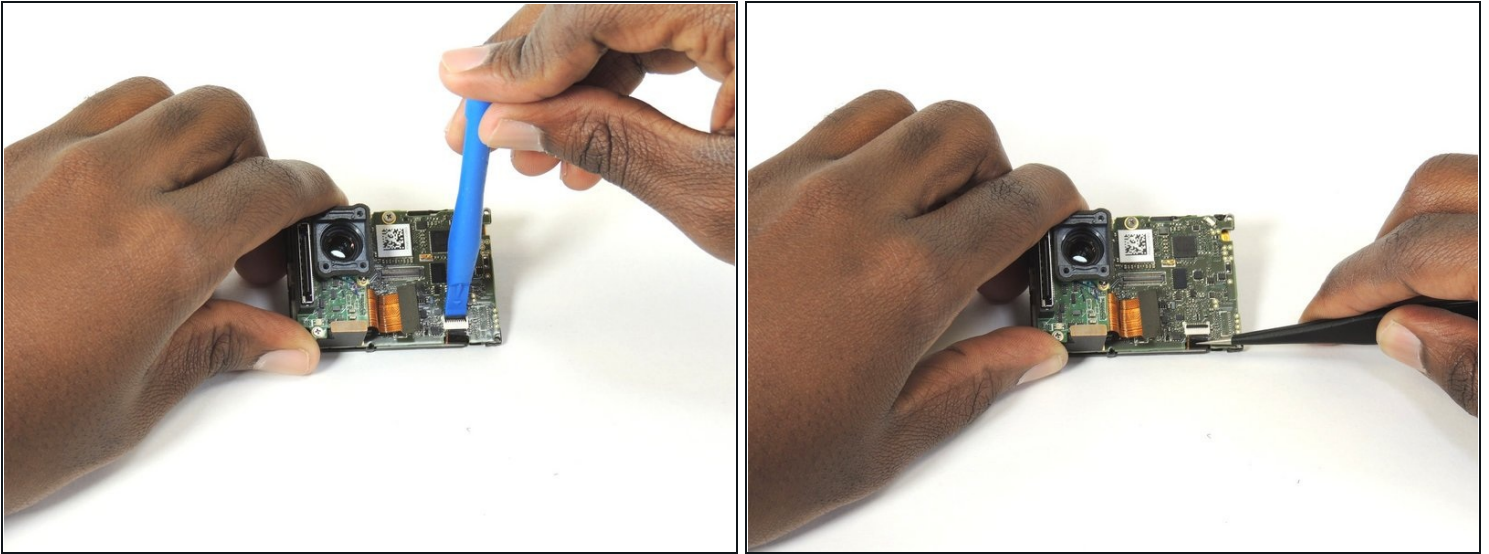
- Insert a metal spudger between the back plastic housing and the camera board assembly. Working around the edge to be careful of the inner components, carefully remove the camera.

Step 4



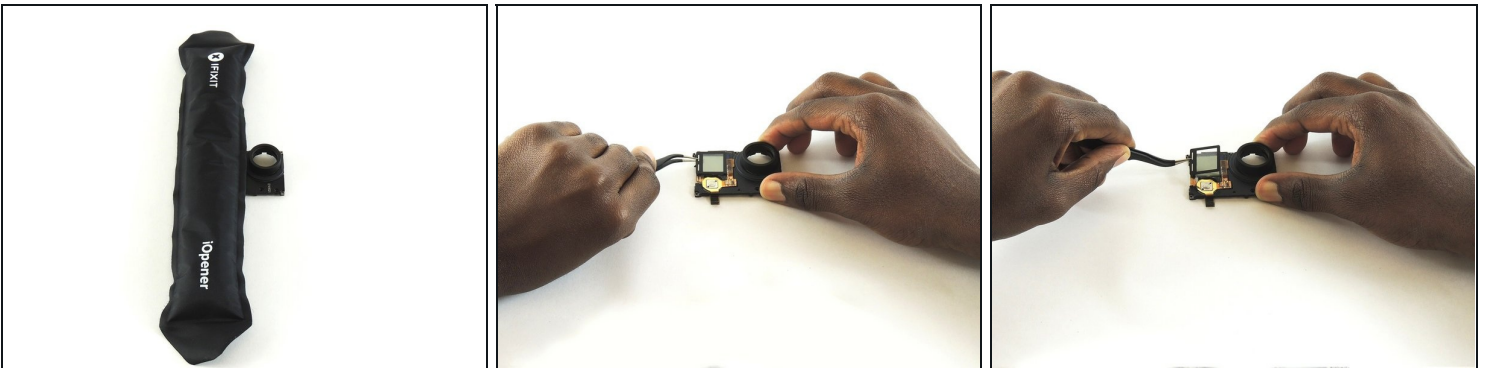
- Using tweezers, remove the ribbon strip by pulling on it. This will remove the connection.
 - Push down on the three wires with the metal spudger and the clip will disconnect from the motherboard.
- ⚠ The clip must be pulled **up and away** from the motherboard. Attempting to slide it out will damage the clip.
- ★ During reassembly, remove the black tape on the ribbon cable, turn the camera upside down so you can see the port, and reinsert the cable with tweezers. It's a lot easier!

Step 5 — LCD Screen



- Open the clip that is located on the motherboard
- Use a pair of [tweezers](#) to pull the ribbon from the clip

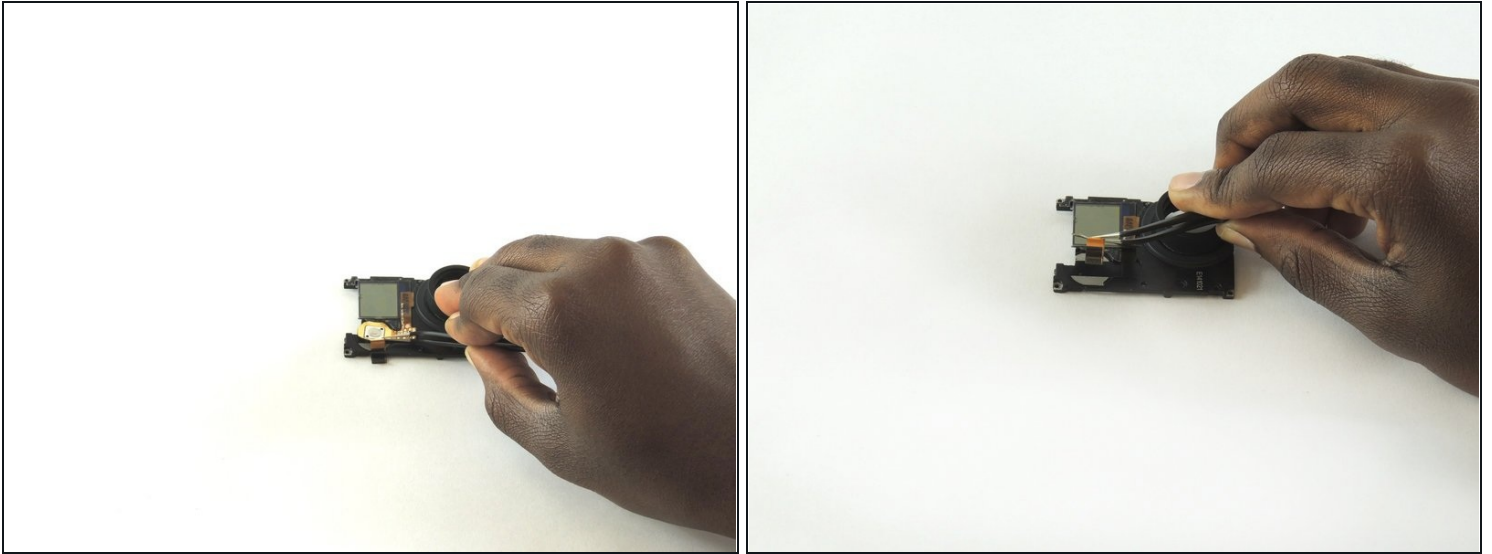
Step 6



ⓘ Before you start this step flip the section holding the LCD screen over

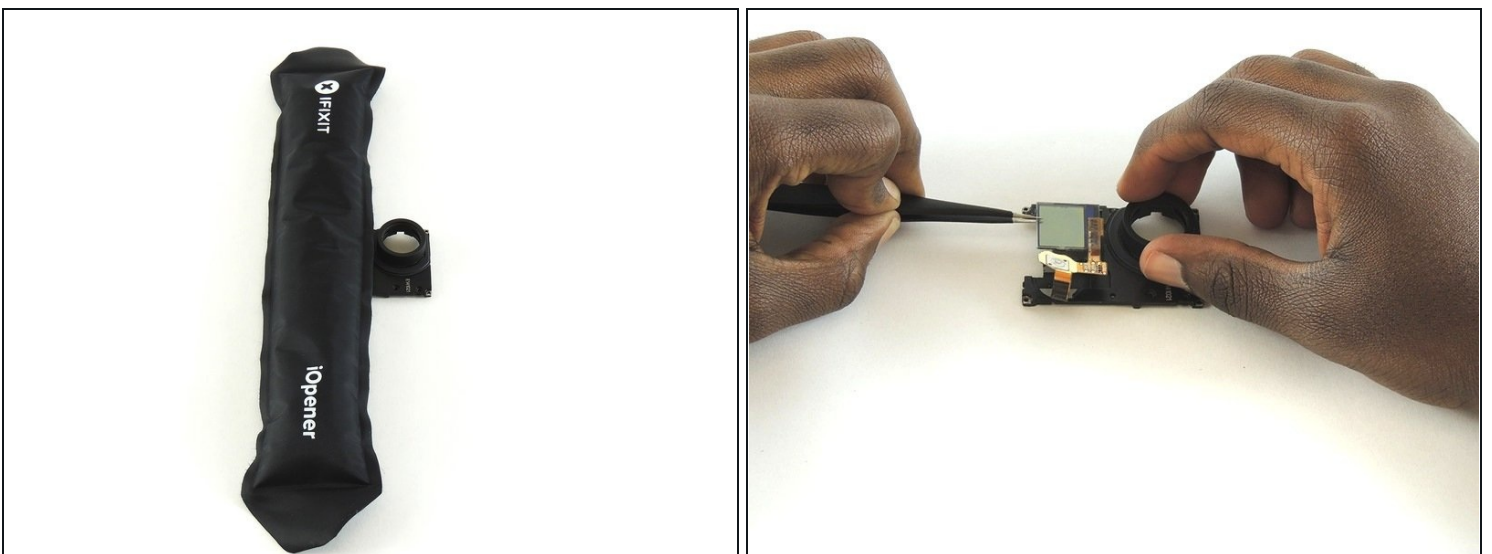
- Place the iOpener on the LCD screen cover to release the glue
- Lift the covering of the LCD screen cover off with a pair of tweezers

Step 7



- Use a pair of tweezers to lift the ribbon through the opening and lift all the way up to the LCD screen
- ⓘ A section of our LCD screen ribbon was broken so it is not visible from the image.

Step 8



- Place the iOpener on the LCD screen to remove the glue
- Use a pair of tweezers to lift the LCD screen off the device

To reassemble your device, follow these instructions in reverse order.