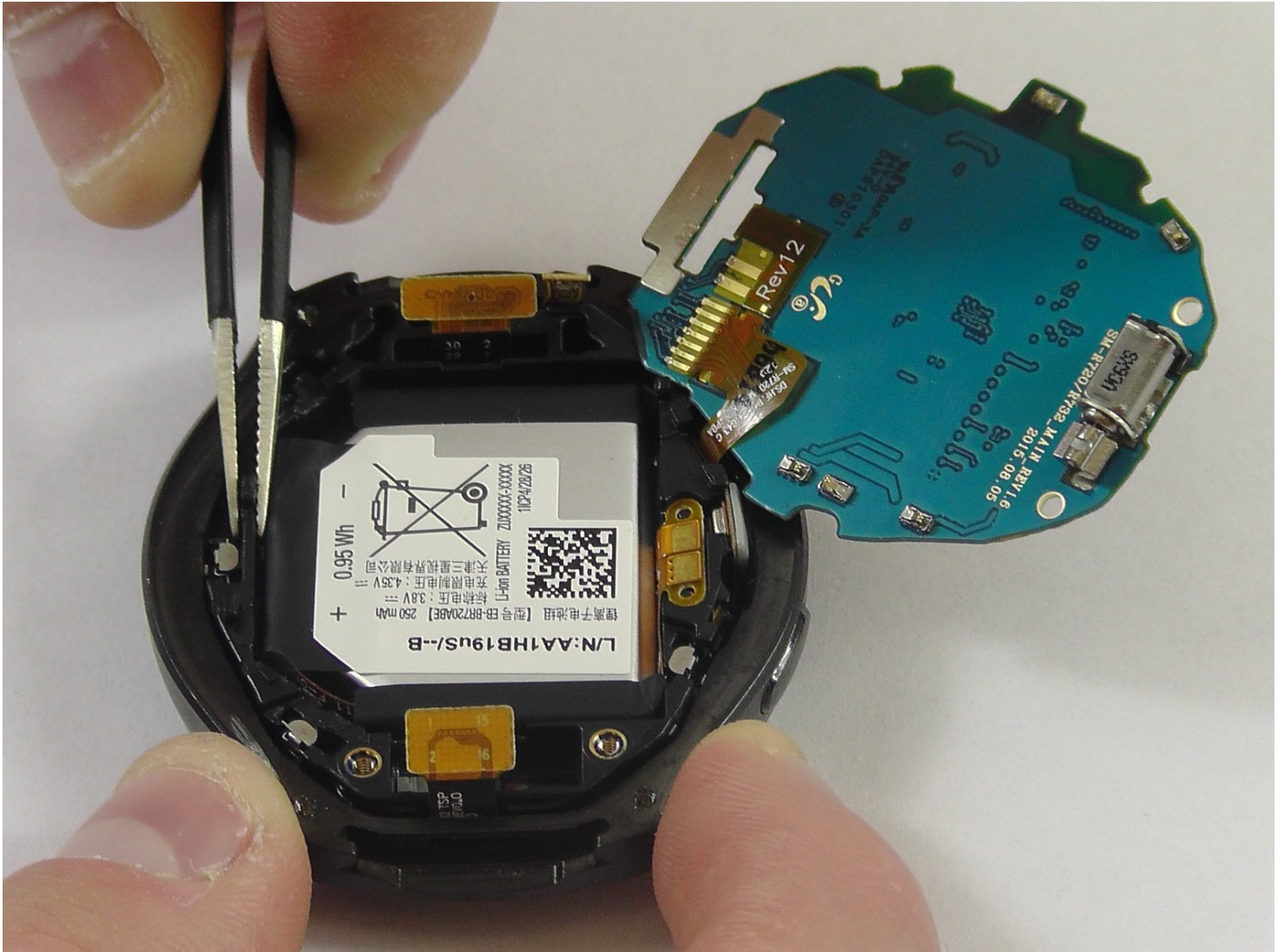




# Samsung Gear S2 Battery Replacement

Does your watch battery last less than a day...

Written By: Jacob Baldwin



# INTRODUCTION

Does your watch battery last less than a day with minimal use, or does the watch only power on when connected to the charger? Replacing the battery may fix these problems.

## TOOLS:

[Tri-point Y0 Screwdriver](#) (1)  
[Heavy-Duty Spudger](#) (1)  
[iFixit Opening Tool](#) (1)  
[Phillips #00 Screwdriver](#) (1)  
[Tweezers](#) (1)

## PARTS:

[Samsung Gear S2 Battery](#) (1)

## Step 1 — Watch Strap



- Flip the watch over so that the face is down.
- Using a Y#0 screwdriver, unscrew the four 3.5 millimeter tri-head screws.

 Remember to turn off the watch to avoid being shocked.

## Step 2



- Using your finger, push forward on the release while pulling up on the strap.
- ① You may find it helpful to use the flat end of a spudger to push on the release instead of your finger.

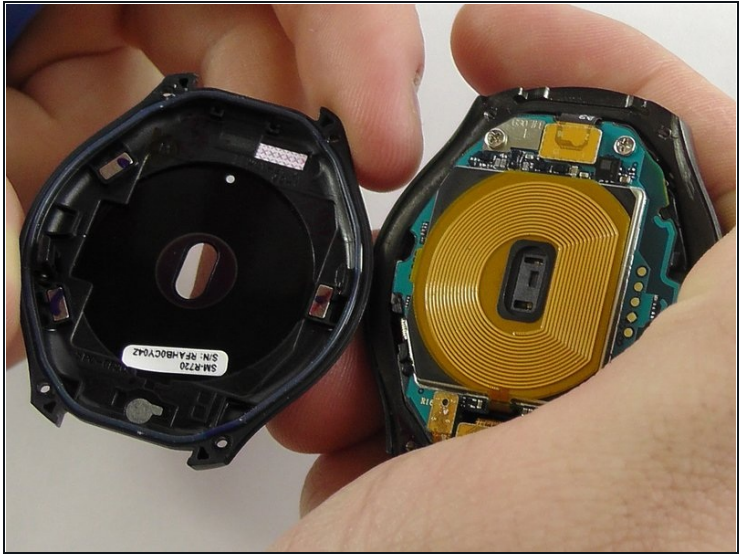
## Step 3



- Repeat the procedure from step 2 for the other strap.



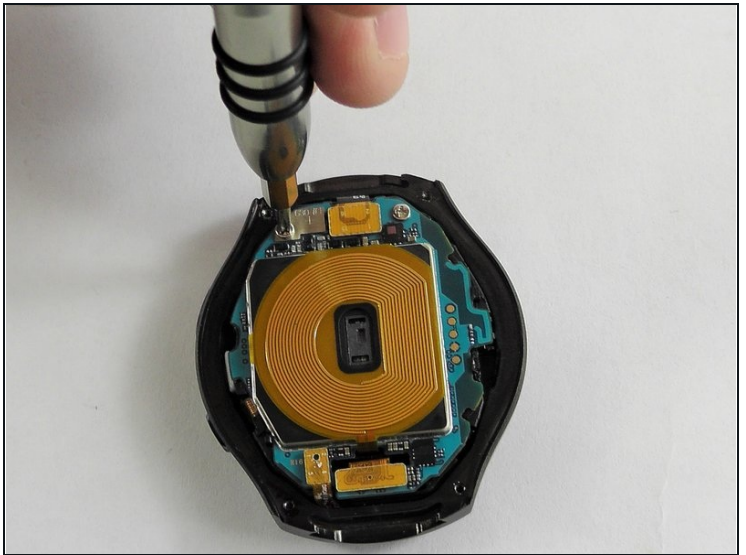
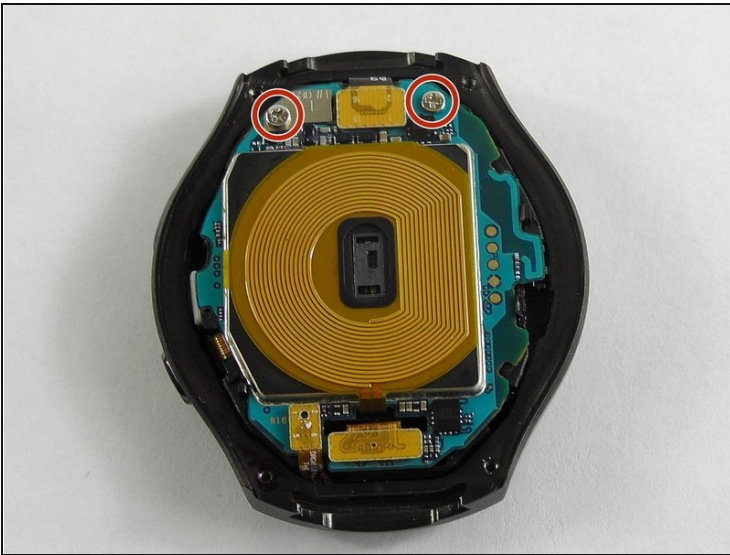
## Step 4 — Back



- Insert a plastic opening tool between the top and bottom portions of the case, and gently pry off the back.

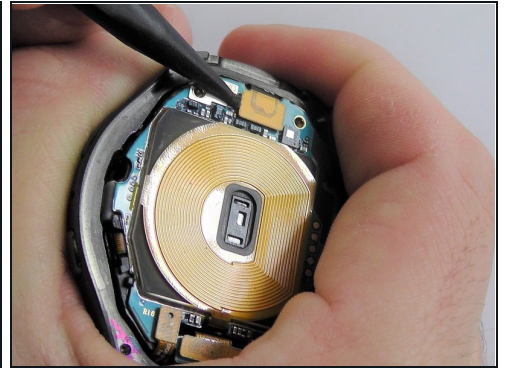
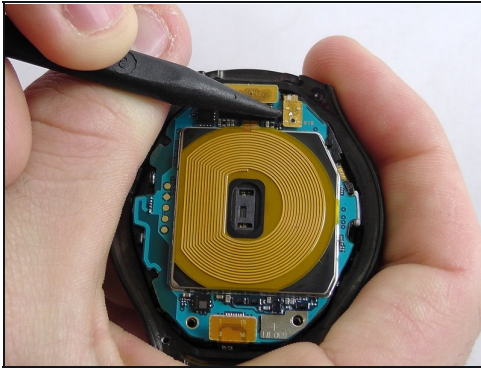
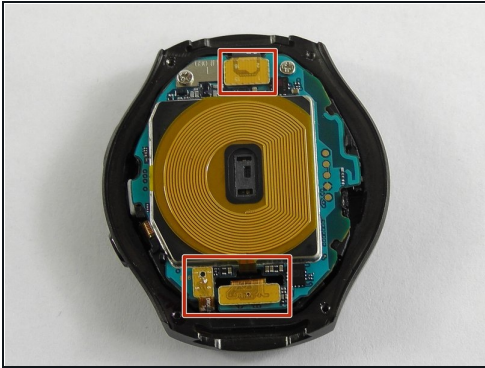
⚠ Do not insert the tool more than 3 millimeters into the case. Inserting more than 3 mm may damage the seal and electric components.

## Step 5 — Motherboard



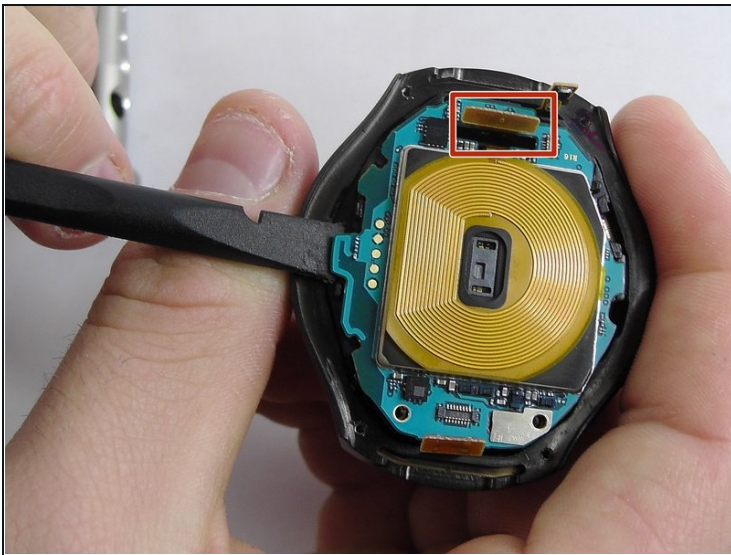
- Using a Philips head #00 screwdriver, remove the two 3.6 millimeter screws.

## Step 6



- Using a spudger, pry up the three cables.

## Step 7



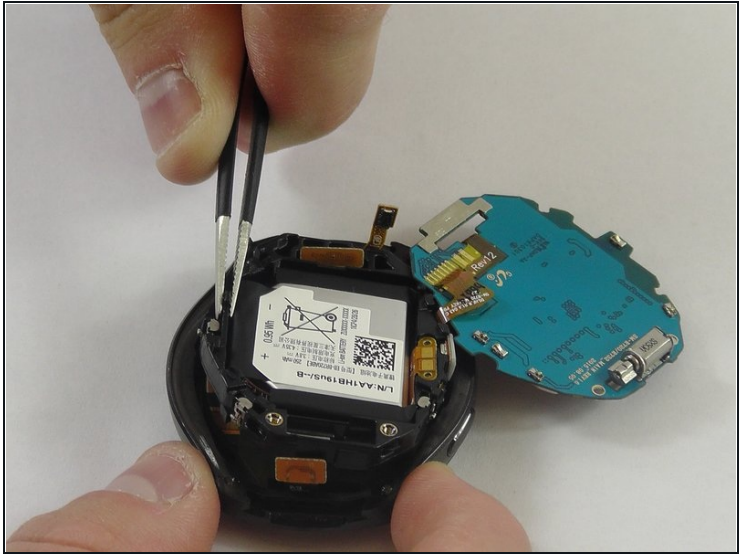
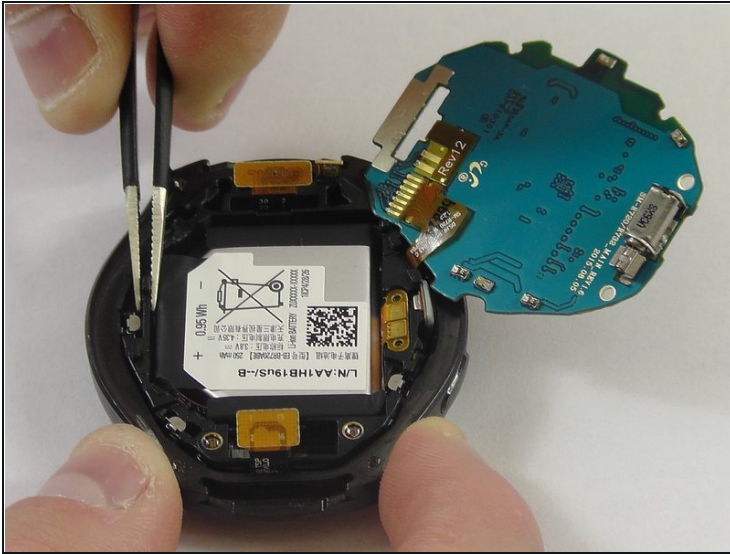
- Using the flat end of a spudger, pry up the motherboard.

⚠ Make sure the cable is fed through the hole to avoid damaging it.

- The motherboard is attached to the battery casing, so place the motherboard in the orientation shown once freed.



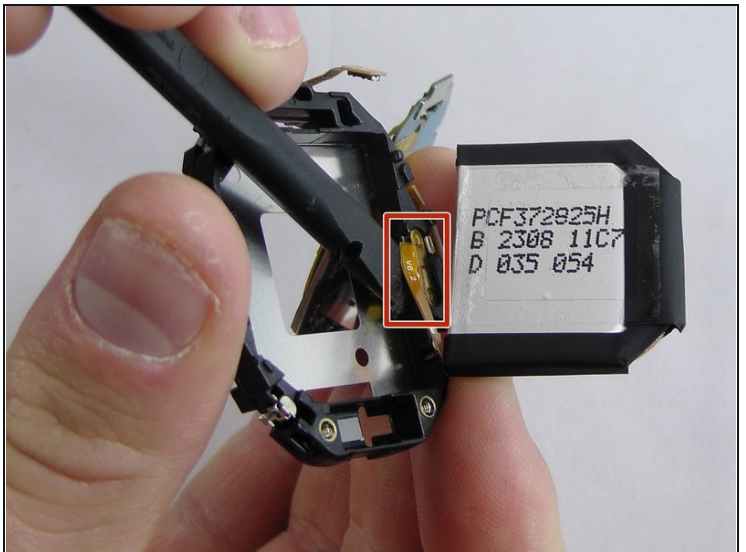
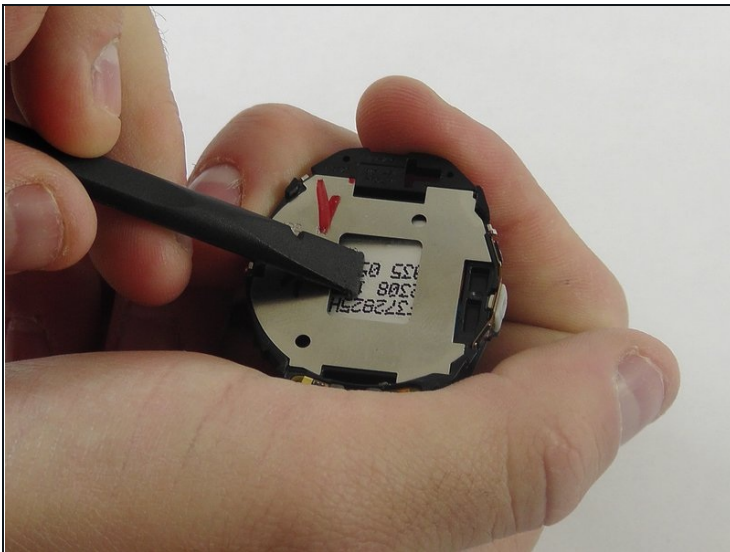
## Step 8 — Battery



- Using [tweezers](#), lift the battery casing.

⚠ Make sure the cables are fed through their gaps to avoid damaging them.

## Step 9



- Flip the battery casing over and using a spudger, push on the battery to free it from the casing.
- Once the battery is free, use the flat end of a spudger to lift up the battery cable.

---

To reassemble your device, follow these instructions in reverse order.