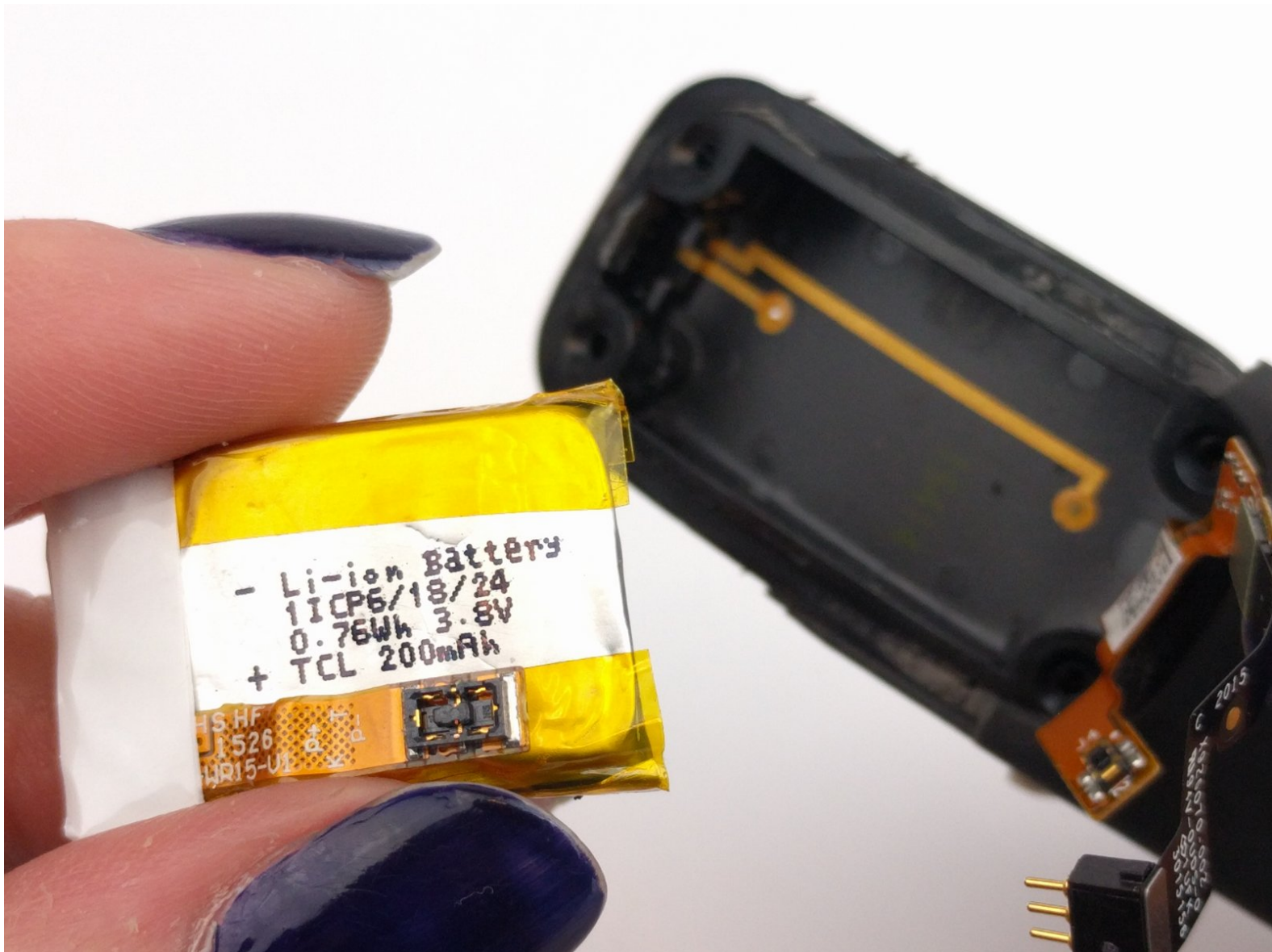




# Microsoft Band 2 Battery Replacement

Removing the Microsoft Band 2 battery

Written By: Chris Syracuse



## INTRODUCTION

This guide will show you how to remove the Microsoft Band 2 battery in case the battery dies out, a common problem in the Band 2.



### TOOLS:

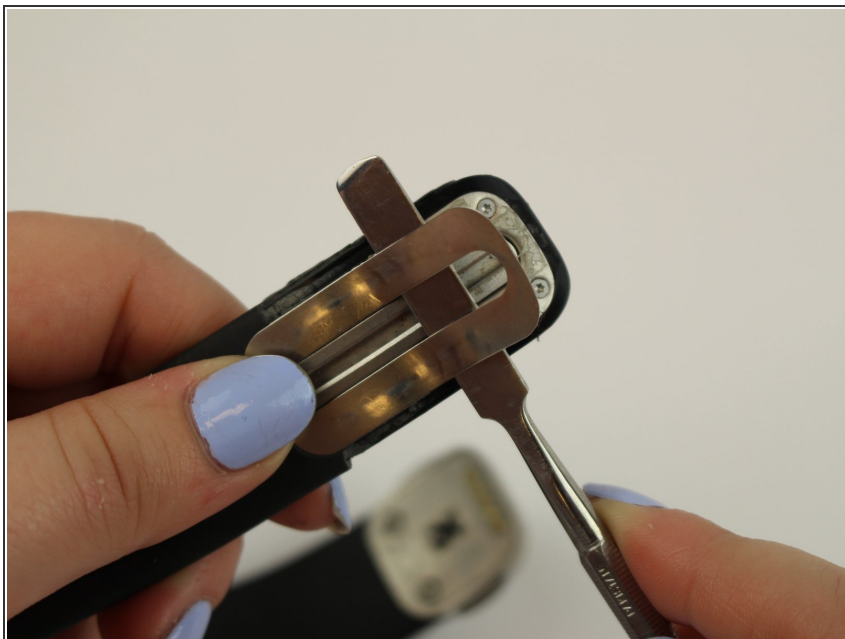
- [T3 Torx Screwdriver](#) (1)
- [Metal Spudger](#) (1)
- [iFixit Opening Tools](#) (1)
- [Tweezers](#) (1)



### PARTS:

- [Microsoft Band 2 Replacement Battery](#) (1)

## Step 1 — Battery



- Peel back the metal cover on the end of the watchband.

## Step 2



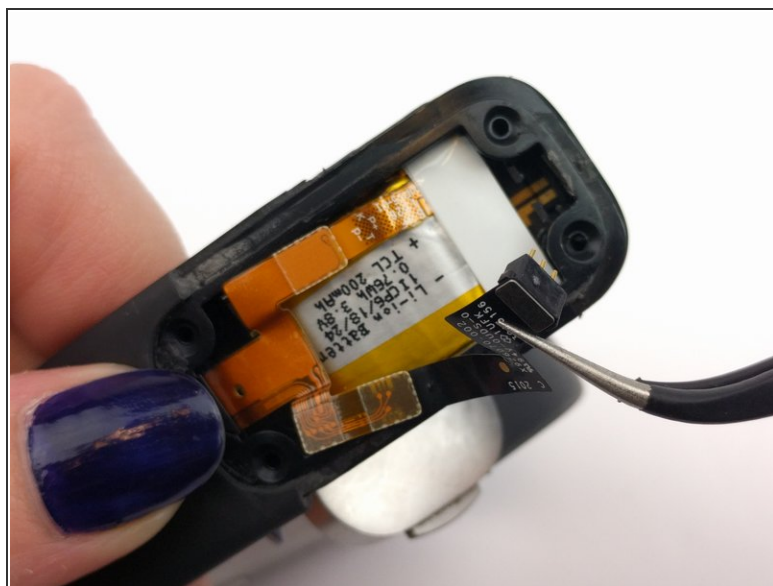
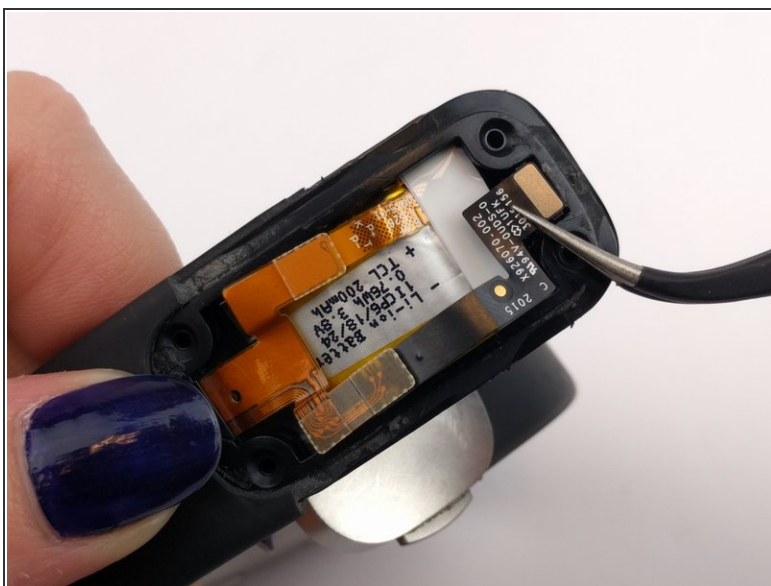
- Use a T3 Torx screwdriver to unscrew the four 6 mm screws on the corners of the metal cover plate.

### Step 3



- Use the plastic opening tool to pry off the metal cover plate.

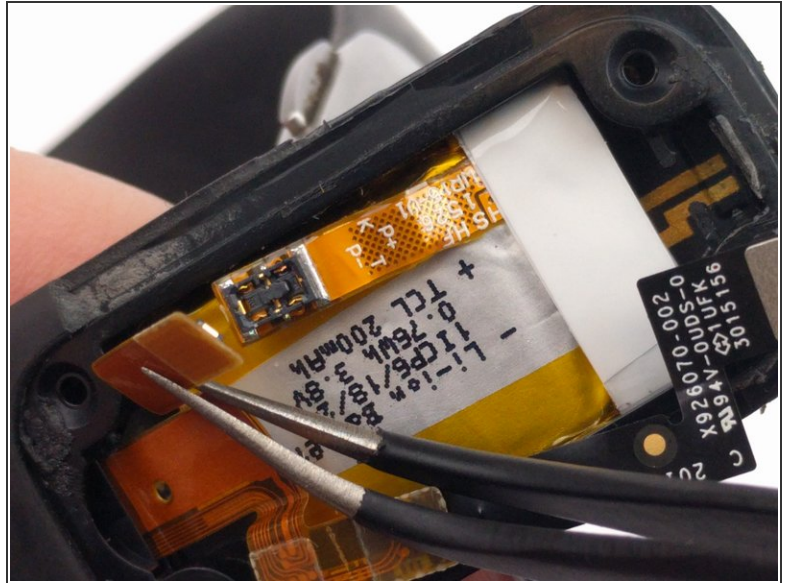
### Step 4



- Detach the black ribbon cable by using the tweezers.

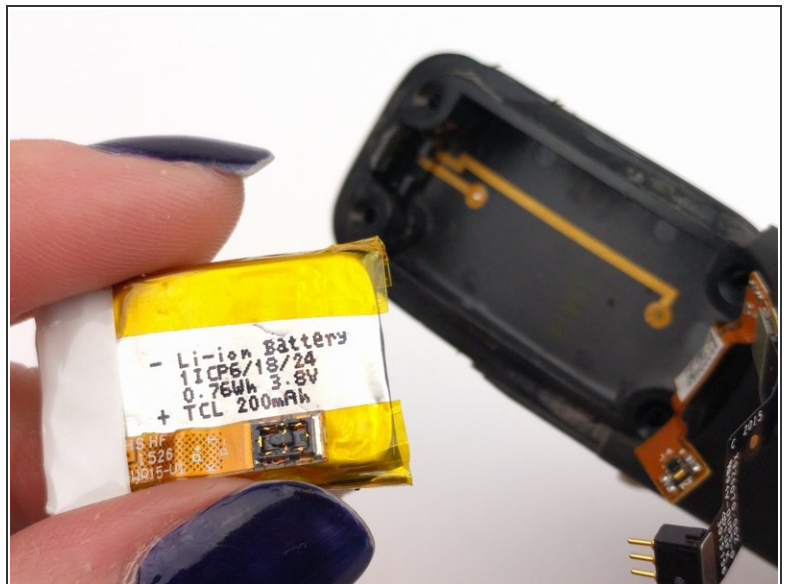


## Step 5



- Detach the orange press-fit (or "pop") connector by using the tweezers.

## Step 6



- Pry out the battery using the plastic opening tool.

To reassemble your device, follow these instructions in reverse order.