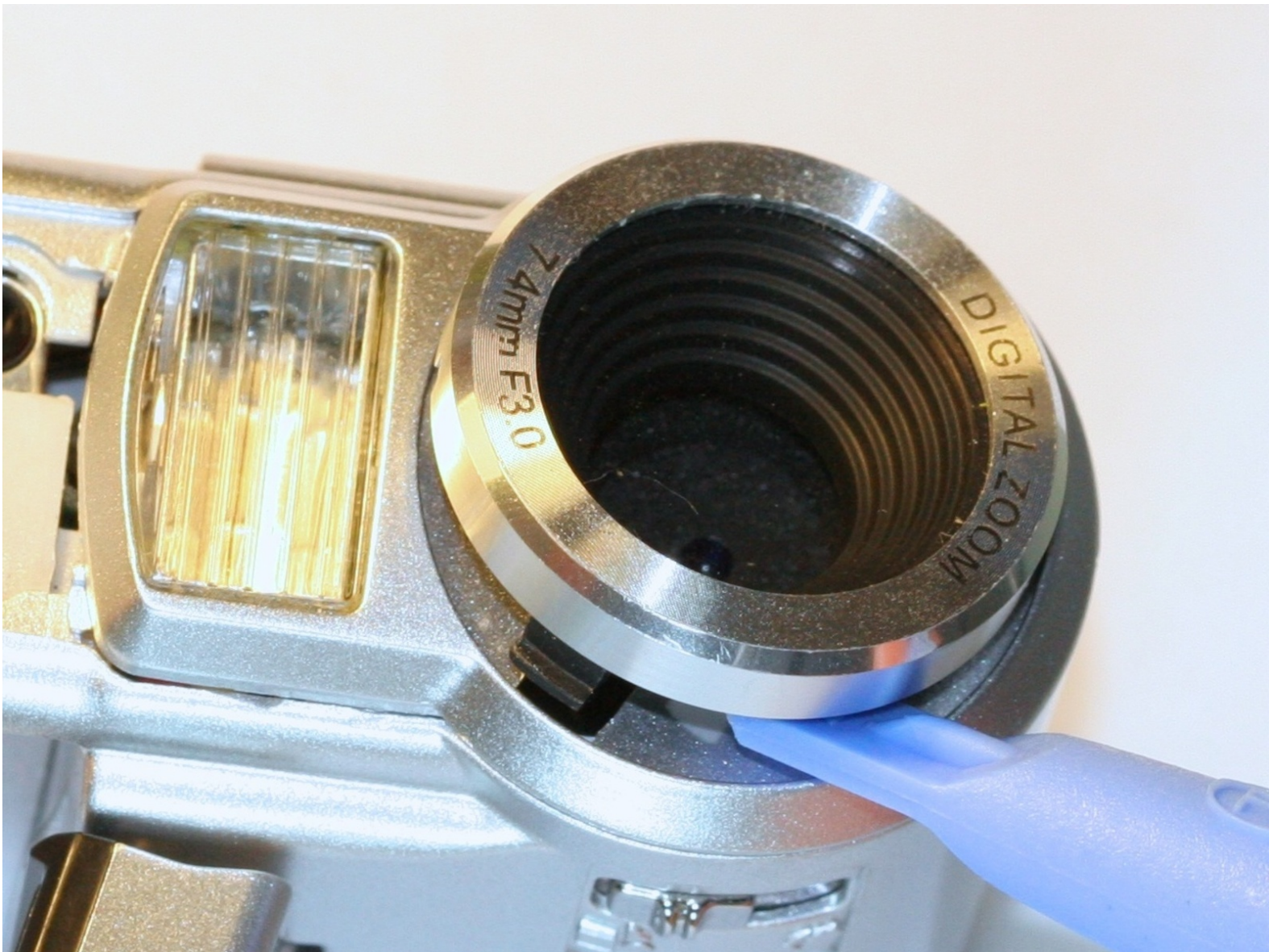




Aiptek DZO-V58N Lens Protector Replacement

This guide shows the process of installing the Lens Protector.

Written By: Zachary Yun



INTRODUCTION

The lens protector is a plastic cover that protects the lens from scratches, dirt and other debris. Use this guide to replace the lens protector.

TOOLS:

- [Tweezers](#) (1)
 - [Phillips #00 Screwdriver](#) (1)
 - [iFixit Opening Tools](#) (1)
-

Step 1 — Battery



- Locate the battery compartment on the back of the camera. It is the panel with the plastic ridges for simple removal.
- Slide the battery compartment cover down off of the camera body.

Step 2



- Pry up the battery from the bottom using a finger and remove the battery from the case.

Step 3 — Lens Protector



- Remove the lanyard by pulling the grey lace through the black string loop.
- Pull black string loop through the silver bracket.

Step 4



- Use a plastic opening tool to pry off the black control cover.
- ⓘ The face plates are glued, so use force to pry the face plates from the camera body.

Step 5



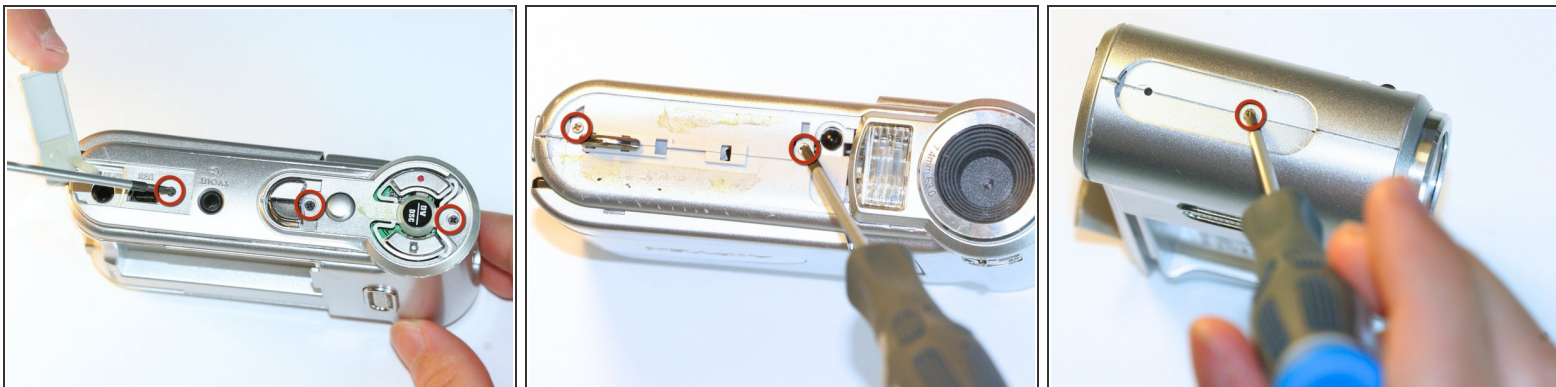
- Use a plastic opening tool to pry off the ridged back face plate and the black button.
- ⓘ The face plates are glued, so use force to pry the face plates from the camera body.
- ⓘ The button is loose and should come off with little or no effort.


Step 6



- Use a plastic opening tool to pry off the silver face plate.
- ⓘ The face plates are glued, so use force to pry the face plates from the camera body.

Step 7



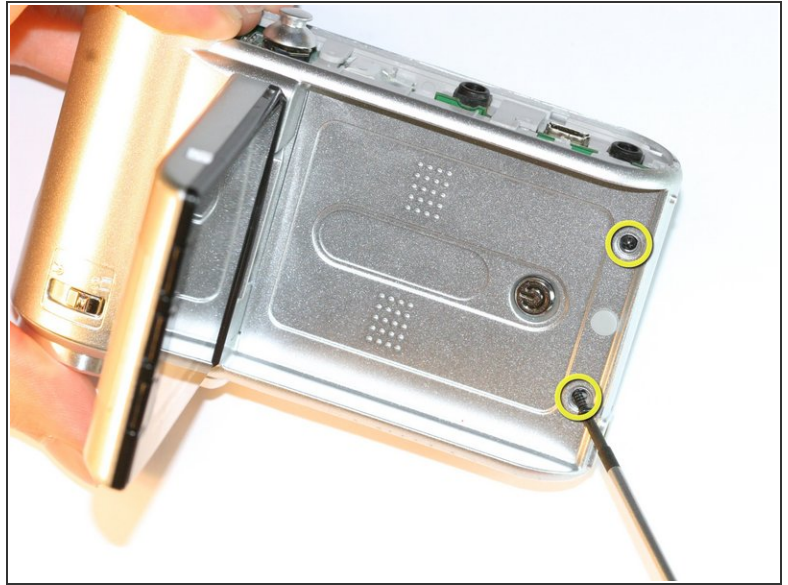
- Open the USB cover to expose the small machine screw.
- Use the Phillips #00 screwdriver to unscrew the six 0.5cm machine case screws (distributed around the camera body).
-  These small screws are easy to lose. Place the removed screws in an organized container to avoid losing them.

Step 8



- Pull off the side control panel.

Step 9



- Flip open the screen by pulling the loose end of the screen away from the case.
- Use tweezers to remove the two outside rubber dots to reveal the two 0.5cm machine screws.
- Use the #00 Phillips Screwdriver to remove both screws.

Step 10



- Pull the body apart from the bottom of device just enough to make space to remove the silver plastic strap holder.
- Use tweezers to remove the silver plastic strap holder.
- Use a plastic opening tool to pry off the lens protector.

To reassemble your device, follow these instructions in reverse order.