



Samsung Galaxy TabPro S Rear Facing Camera Replacement

Camera replacement guide

Written By: Jyotsna Gone



INTRODUCTION

Is your tablet not able to take photos, videos, or adjust screen brightness by itself?

Then maybe its time to replace your tablet's camera.

This guide will give you step by step instructions on how to replace your tablet's camera.



TOOLS:

- [Tweezers](#) (1)
- [iOpener](#) (1)
- [iFixit Opening Tools](#) (1)
- [Spudger](#) (1)



PARTS:

- [Samsung Galaxy TabPro S Camera](#) (1)

Step 1 — Rear Facing Camera



- Place the device face down on a flat work surface.

Step 2



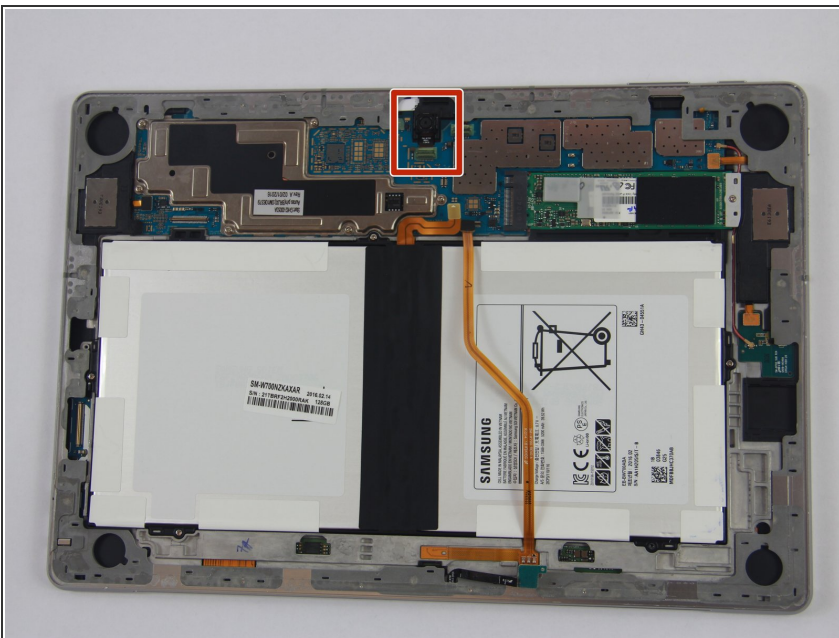
- Heat the iOpener in the microwave for 30 seconds. Then place it on each side for 20 seconds in order to loosen the adhesive sealing on the device.

Step 3



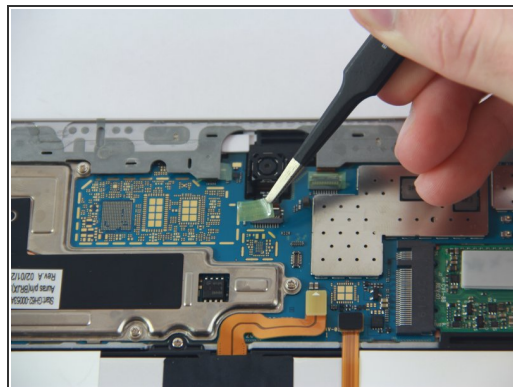
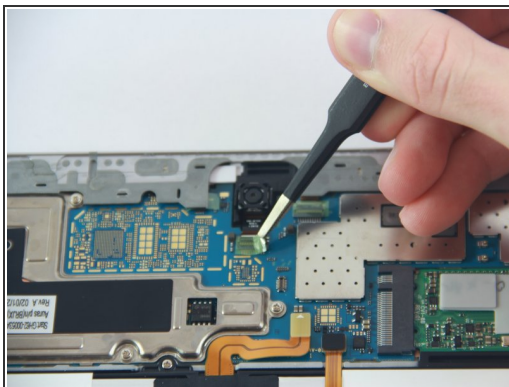
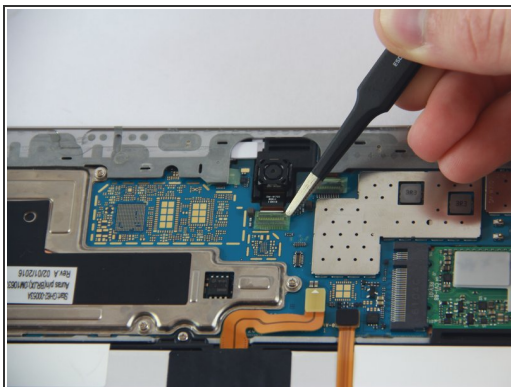
- Using the plastic spudger, open up the back of the device.

Step 4



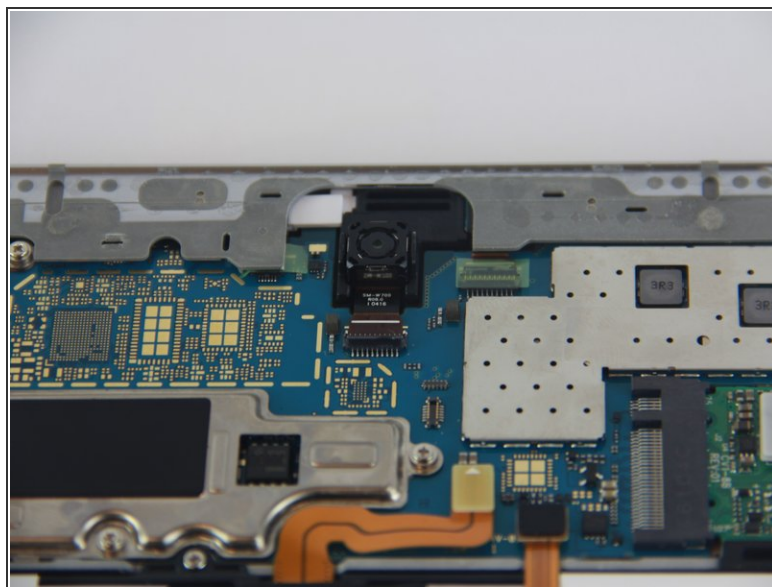
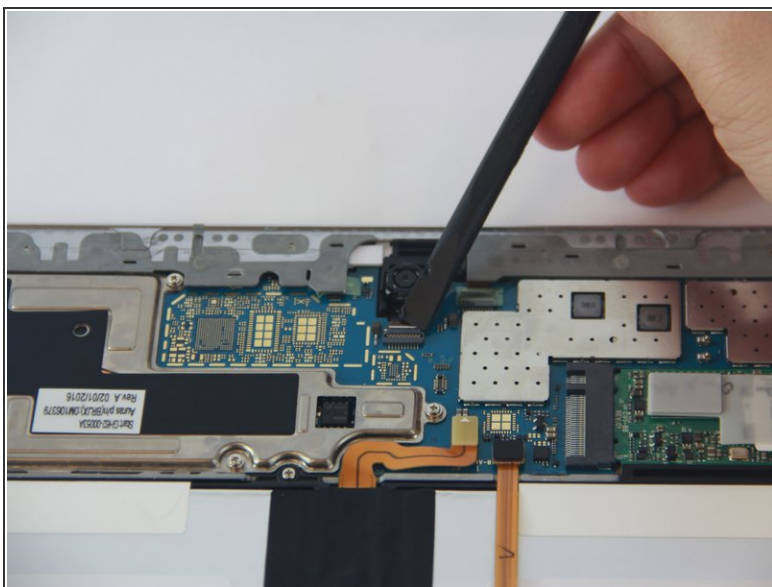
- Locate the camera and its corresponding connecting port.

Step 5



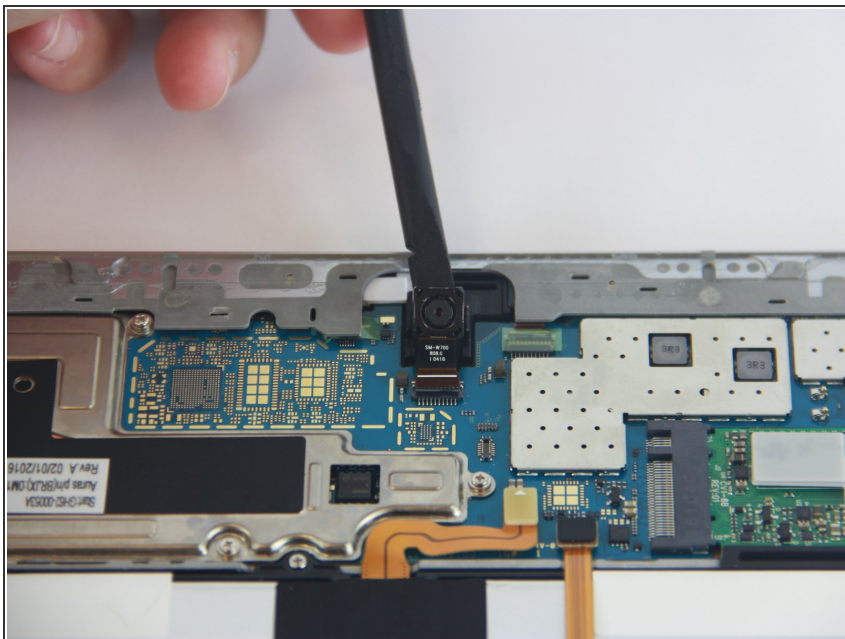
- Using tweezers carefully peel off the sticker.

Step 6



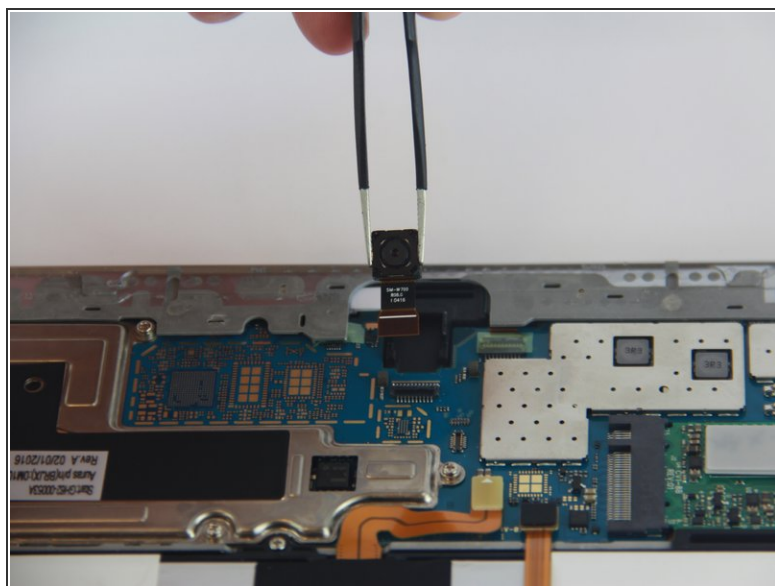
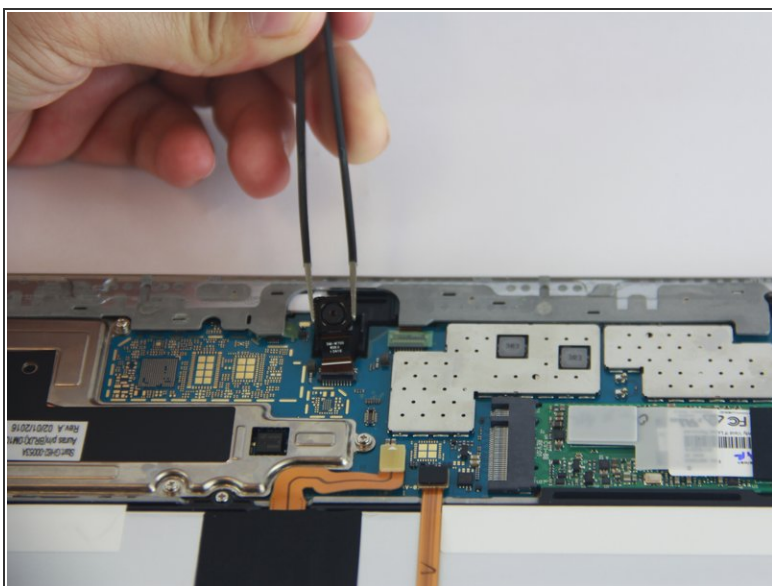
- Using the black nylon spudger, flip the top half of the connecting port downward until you hear a click.

Step 7



- Proceed to lift up the camera out of its resting position.

Step 8



- Simply pull the camera parallel to the device out of its connecting port.

To reassemble your device, follow these instructions in reverse order.