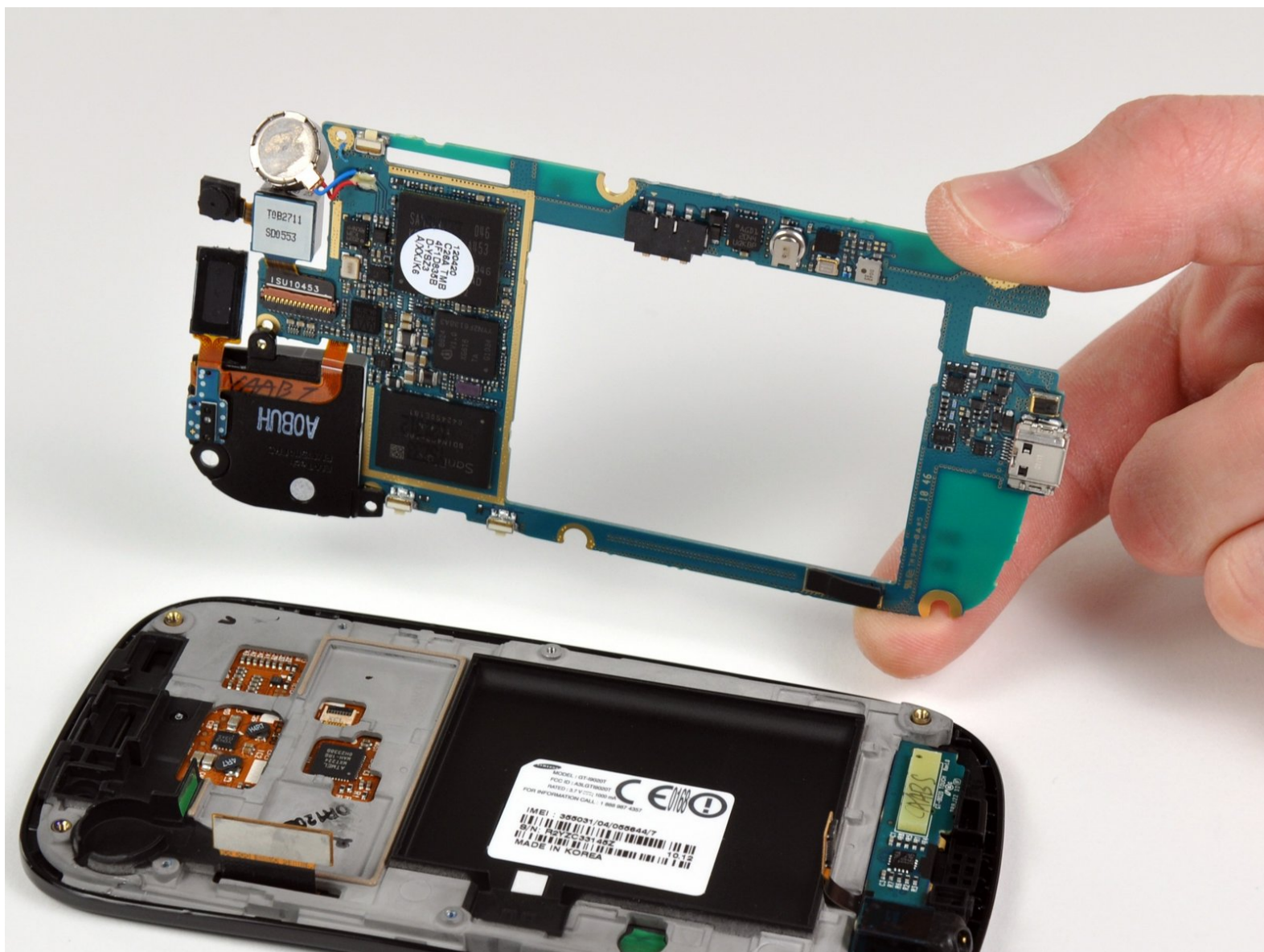




# Nexus S Motherboard Replacement

Replace the motherboard in your Samsung Nexus S.

Written By: Walter Galan



---

## INTRODUCTION

Use this guide to replace the motherboard (includes rear camera and speaker).

---

### TOOLS:

- [Phillips #00 Screwdriver](#) (1)
  - [iFixit Opening Tools](#) (1)
-

## Step 1 — Rear Panel



- Gently insert a plastic opening tool between the rear panel and the inner rear frame near the rear-facing camera.
- Use your plastic opening tool to pry up the rear case around the perimeter of the Nexus S.

## Step 2



- Remove the rear panel from the Nexus S.

### Step 3 — Battery



- Using the edge of a plastic opening tool, lift the battery from the end closest to the headphone jack.
- Remove the battery from the Nexus S.

### Step 4 — SIM Card



- Use your thumb to slide the SIM card downwards from the SIM card slot.
- Remove the SIM card.

## Step 5 — Rear Inner Frame



- Remove the six Phillips screws securing the rear inner frame to the inner case.

## Step 6



- Insert the flat edge of a plastic opening tool in between the rear inner frame and the top left corner of the Nexus S.
- Pry the opening tool upwards to pop the top right corner from the clips securing it to the inner assembly.

## Step 7



- Insert the plastic opening tool to the right of the power button.
- Slide the plastic opening tool downwards along the perimeter of the Nexus S to release the clips on the right side.

## Step 8



- In the same manner as previously described, release the bottom clips located near the bottom of the Nexus S.

## Step 9



- Insert and pry the plastic opening tool to release the final clip securing the rear inner frame to the inner assembly.

## Step 10



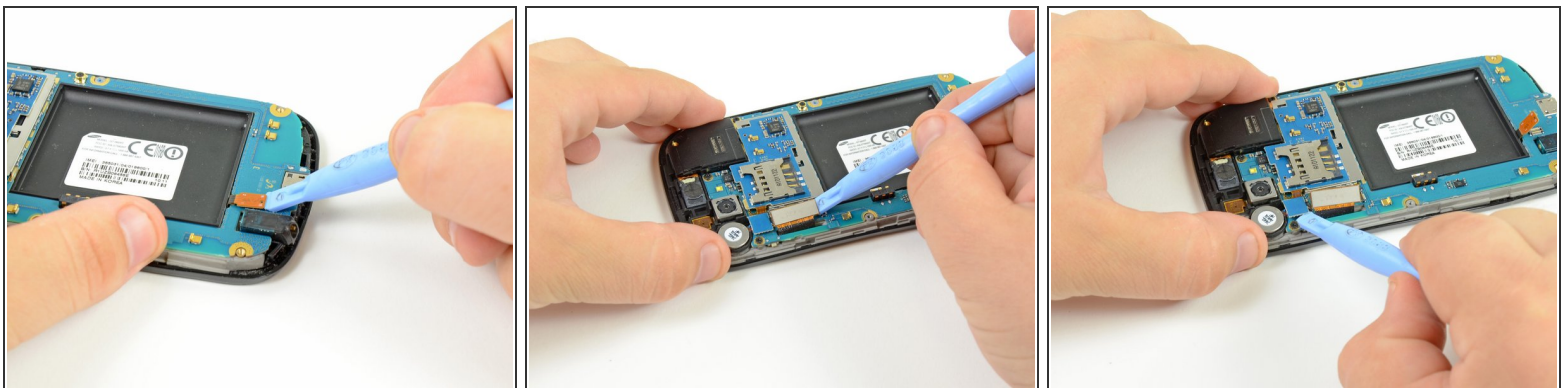
- Lift and remove the rear inner frame from the Nexus S.

## Step 11 — Motherboard



- Disconnect the following cables from their respective sockets on the motherboard:
  - Headphone jack cable
  - Digitizer cable connector
  - Camera/SIM board connector

## Step 12



- Insert the flat edge of a plastic opening tool underneath the headphone jack connector and pry upwards.
- ⚠ Make sure to pry on the connector and not the socket itself. Prying the socket may cause severe damage.
- Repeat the procedure for the digitizer and rear camera/SIM board connectors.

## Step 13



- Remove the three Phillips screws securing the motherboard to the front display assembly.

## Step 14



- Wedge the plastic opening tool near the bottom right corner of the motherboard and pry upwards to dislodge it from its recess.
- Lift and remove the motherboard.

To reassemble your device, follow these instructions in reverse order.