

Written By: Ankit Maurya



---

## INTRODUCTION

CD drive not working properly? CD drive not functioning properly and refusing to come out? This guide will take you through how to remove the CD drive.

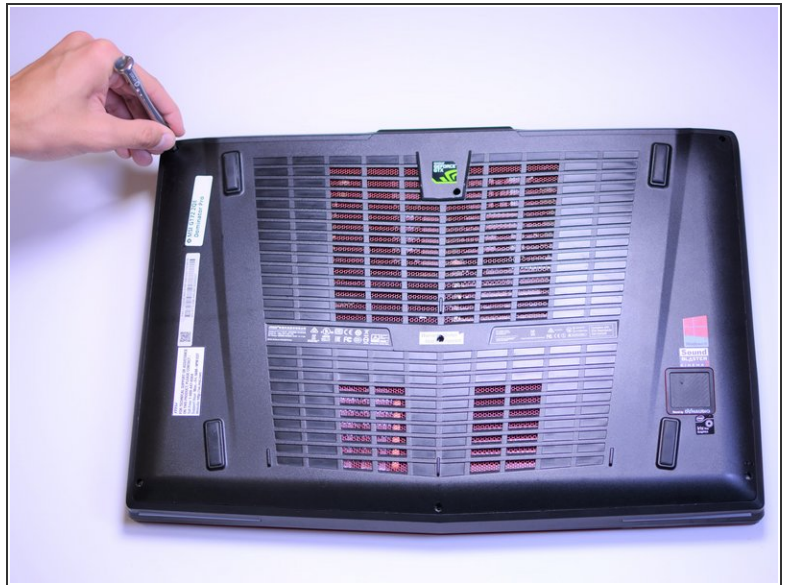
---



### TOOLS:

- [Phillips #0 Screwdriver](#) (1)
  - [iFixit Opening Tools](#) (1)
-

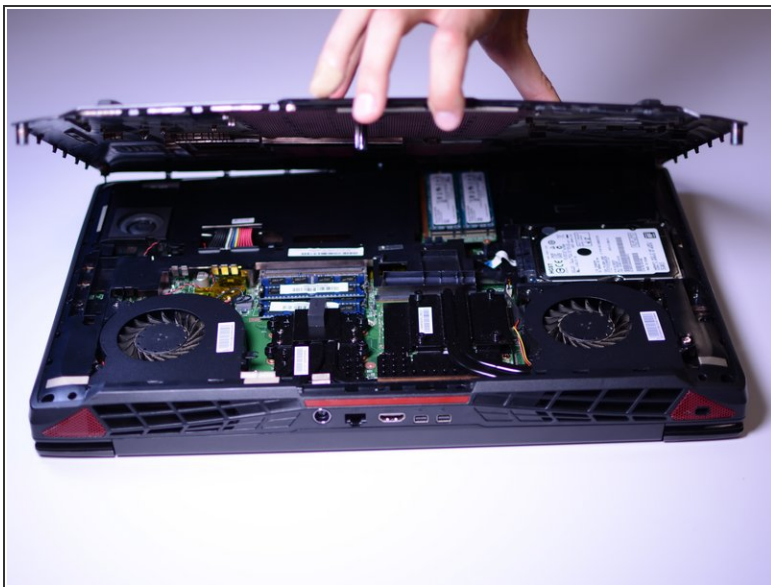
## Step 1 — CD Drive



- Remove the indicated seven (7) 6 mm Phillips #0 screws for the back cover.

**i** The same PHO screwdriver bit can be used throughout all the steps.

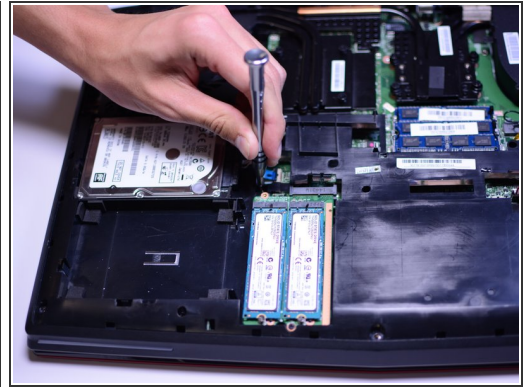
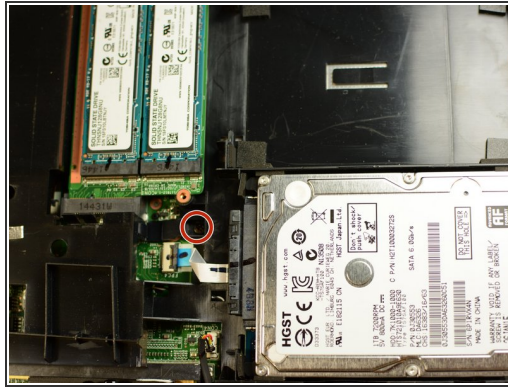
## Step 2



- Lift the back cover using the tab to expose the hardware beneath.



## Step 3



- Remove the indicated 5mm Phillips #0 screw.

⚠ This is the only screw holding the CD drive in place. Do not lose it.

## Step 4



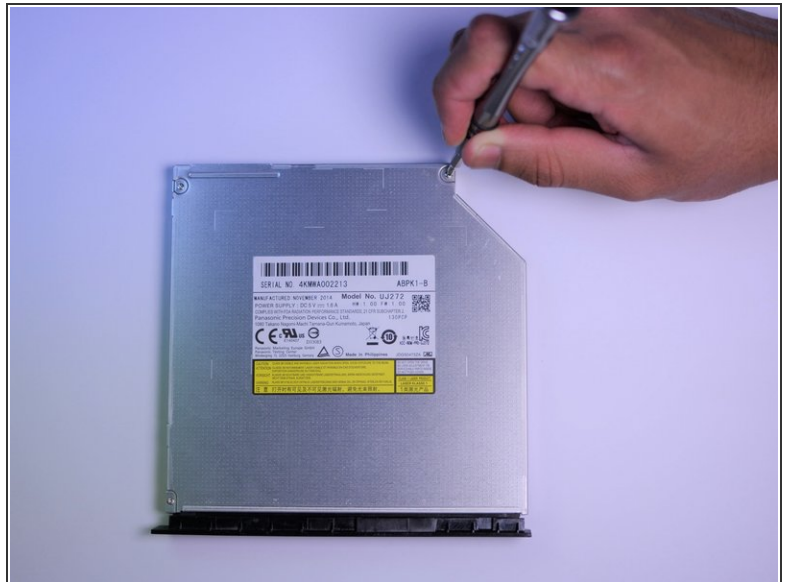
- Using the plastic opening tool, pull out the CD drive.

## Step 5



- Remove the indicated 4mm Phillips #0 screw and metal hinge.

## Step 6



- Remove the three (3) indicated 2mm Phillips #0 screws.

## Step 7



- Lift metal cover gently, using the tab like indent located where the arrow is pointed.
- This should expose the inside of the CD drive.

To reassemble your device, follow these instructions in reverse order.