



HP 250 G3 WiFi Card Replacement

Replacing the WiFi module and removing the laptop guards to provide access to the laptop for numerous repairs.

Written By: Kevin D



INTRODUCTION

If a malfunctioning WiFi module is suspected in an HP 250 G3, it can be detected through the Windows Device Manager tool. In the event that the WiFi module is indeed determined to no longer be operating correctly, the card should be replaced, and this guide demonstrates how to do so. This process is relatively lengthy, but no special technical skills are required to complete this repair.



TOOLS:

- [Phillips #00 Screwdriver](#) (1)
- [iSesamo Opening Tool](#) (1)
- [Tweezers](#) (1)
- [Spudger](#) (1)
- [IC Extractor/Connector Puller](#) (1)
- [stanley knife](#) (1)



PARTS:

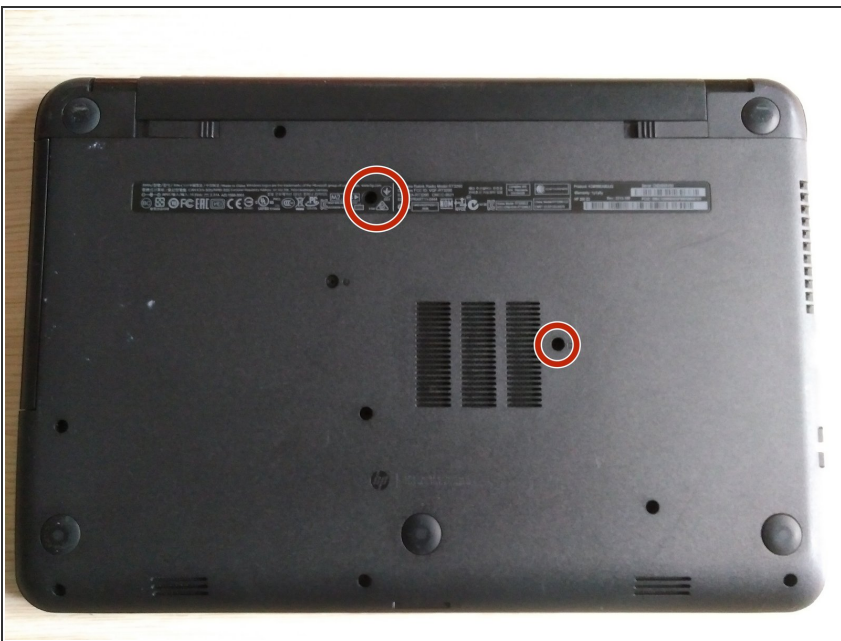
- [wifi module](#) (1)

Step 1 — WiFi Card



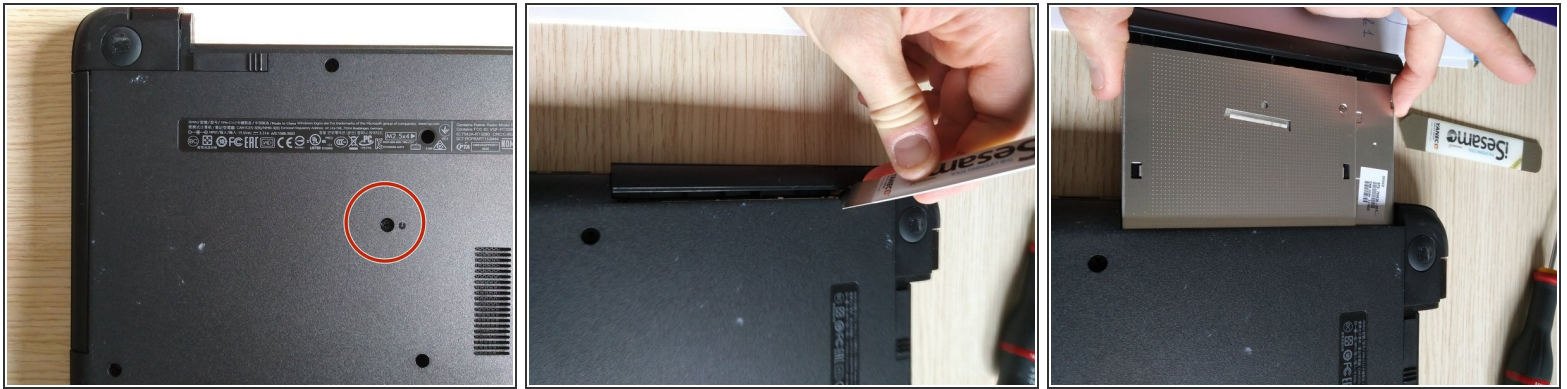
- Remove the battery.

Step 2



- Remove the two indicated screws using a #1 Phillips driver.

Step 3



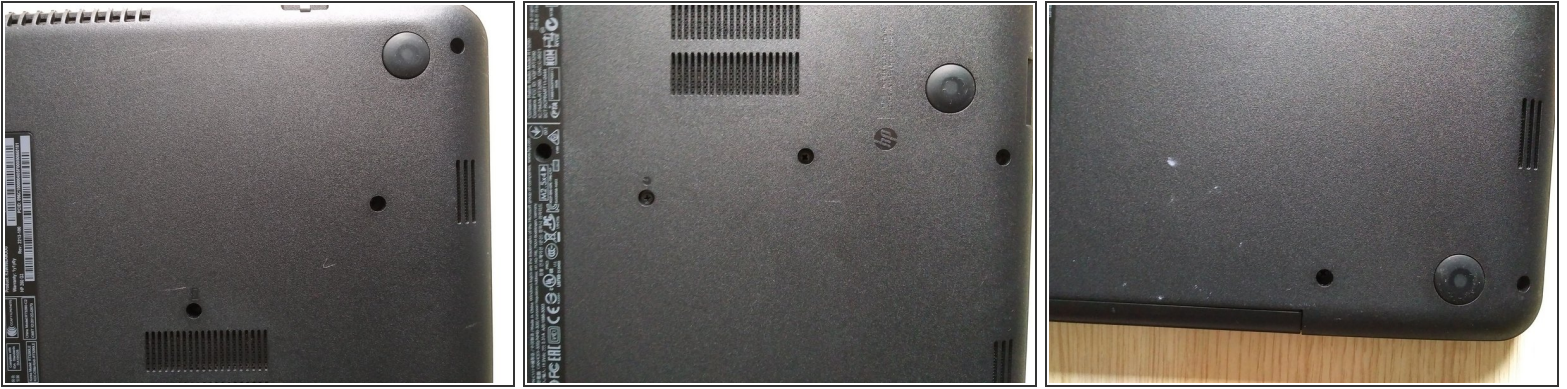
- Use a #1 Philips driver to remove the disc drive's screw.
- Using a spudger, gently pry the drive out of the housing.

Step 4 — screws of the case 1



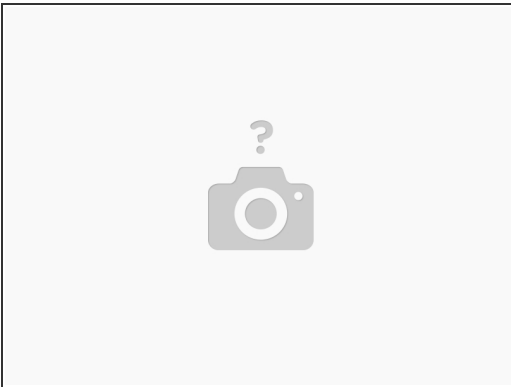
- Remove the rubber rests on the rear of the device, which are close to the battery.
- Remove the hidden screws placed under the rests using a #1 Philips driver.

Step 5 — screws of the case 2



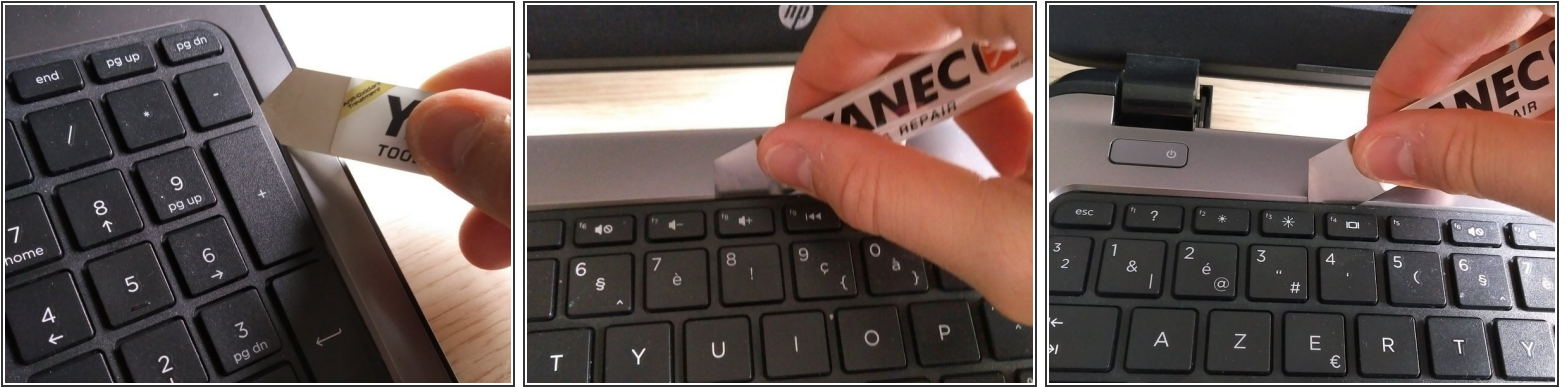
- Remove the remaining screws on the bottom of the device.

Step 6



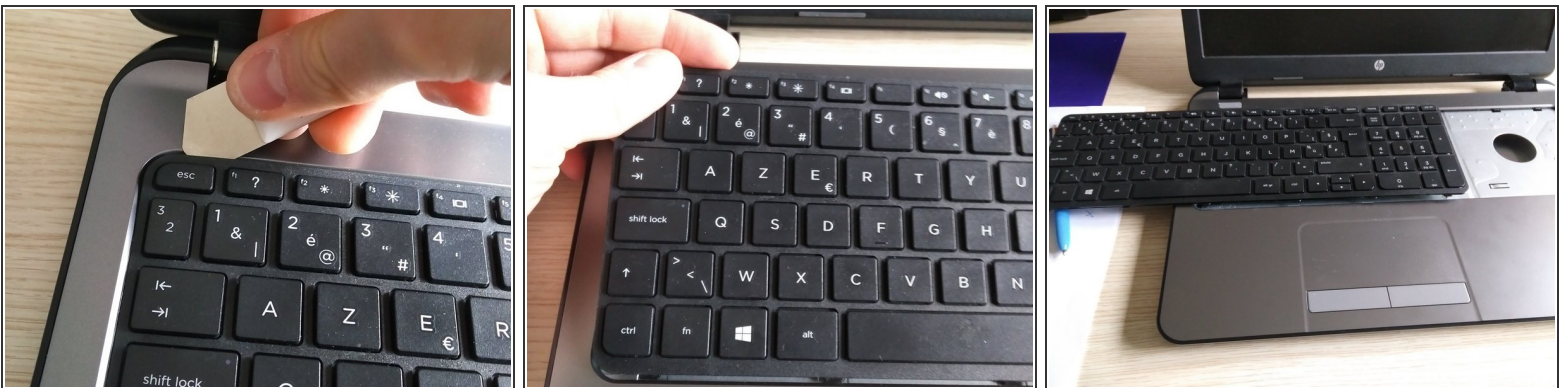
- Remove the two little screws at the DVD entrance.

Step 7 — removing keyboard



- Turn the laptop around.
- Open up the laptop (to remove the keyboard).
- Use a spudger or iSesamo to remove the keyboard.
- Slide the iSesamo around the upper side of the keyboard as shown in the pictures (you will hear clicks).

Step 8

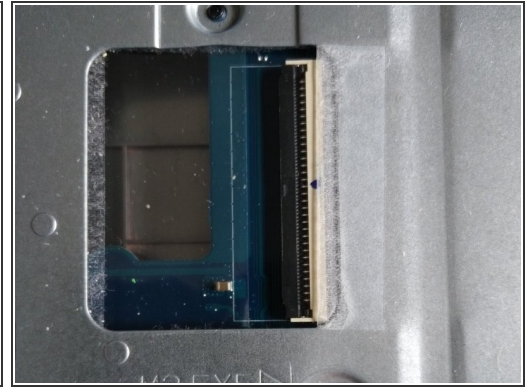


- When it becomes loose, gently slide the keyboard to the left as shown in the third picture.



Be gentle as the thin ribbon can easily tear.

Step 9 — removing keyboard / ribbon cable



- Gently lift the keyboard up.
- Spot the thin ribbon cable attached to the connector (the connector has a plastic lid).
- Carefully open the lid with a spudger and slide the ribbon cable out of the connector.

⚠ Be very gently with the cable and the connector as the lid may come loose.

- Close the lid after removing the cable so that the cable cannot fall out.

Step 10 — removing upper plate/case

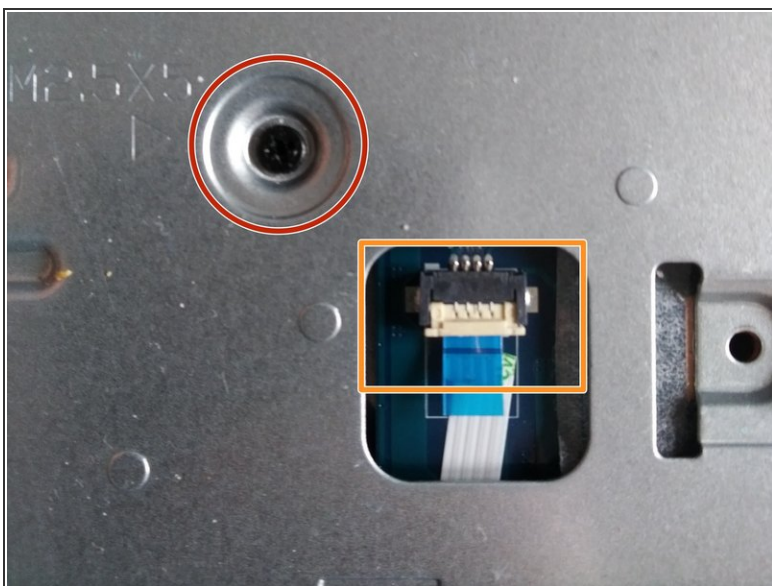


- Remove the screw circled in the second picture.
- Remove the tape over the cable and the connector.
- Remove the white ribbon cable from the connector.
- Open up the lid with a spudger, and gently remove the ribbon cable.

⚠ Use caution, as the ribbon cable is pasted to the plate.

ⓘ This ribbon cable is the connector from the ON/OFF switch.

Step 11



- Remove the circled screw.
- Remove the ribbon cable from the connector.
- i* The ribbon cable/connector is the touch pad/mouse connector.

Step 12



- Remove the screw on the upper side of the laptop.

Step 13



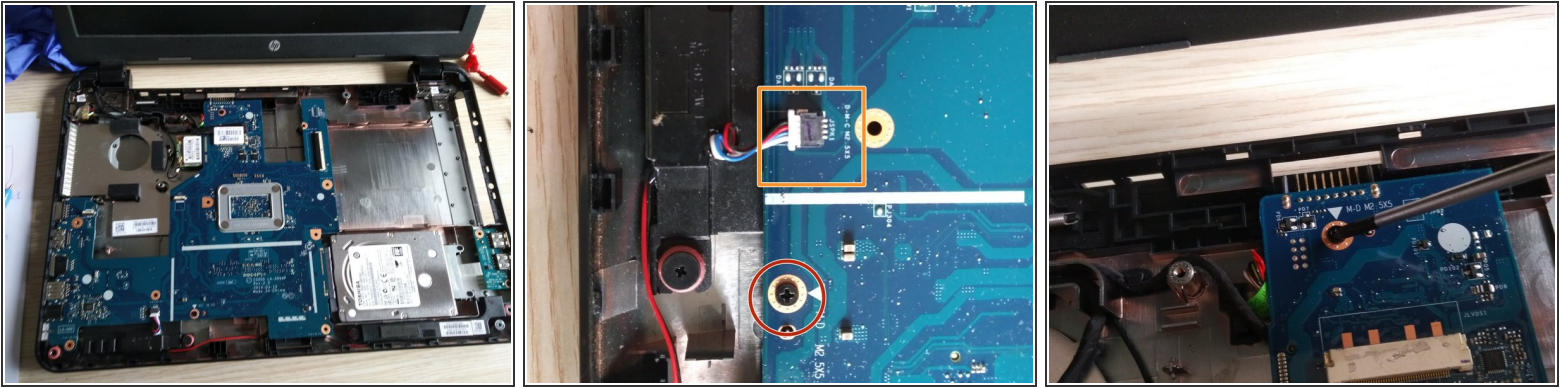
- Remove the last screw (unfortunately, I do not have a picture of this, but you will see it on your laptop).

Step 14



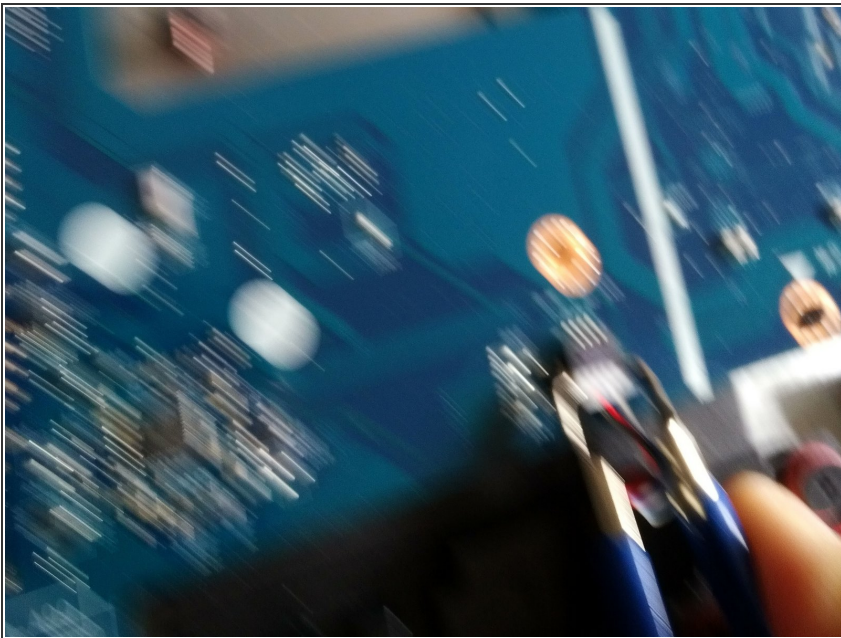
- Slide your iSesamo around the case as shown in picture 1 and 2, and go around the entire laptop.
- ⓘ You will hear clicks after using the iSesamo.
- Lift the upper plate to reveal the motherboard.

Step 15 — removing main board



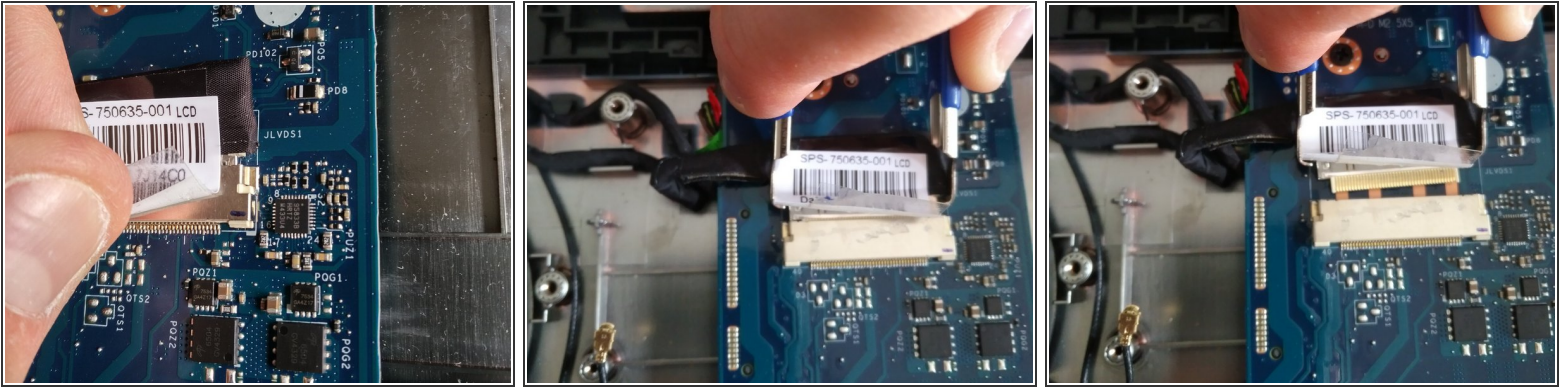
- Remove the two screws holding the main board to the plate (see pictures two and three).

Step 16 — loose screws and cables to remove main board





- Use an IC extractor to remove the audio connector from the socket.

Step 17 — removing LCD cable

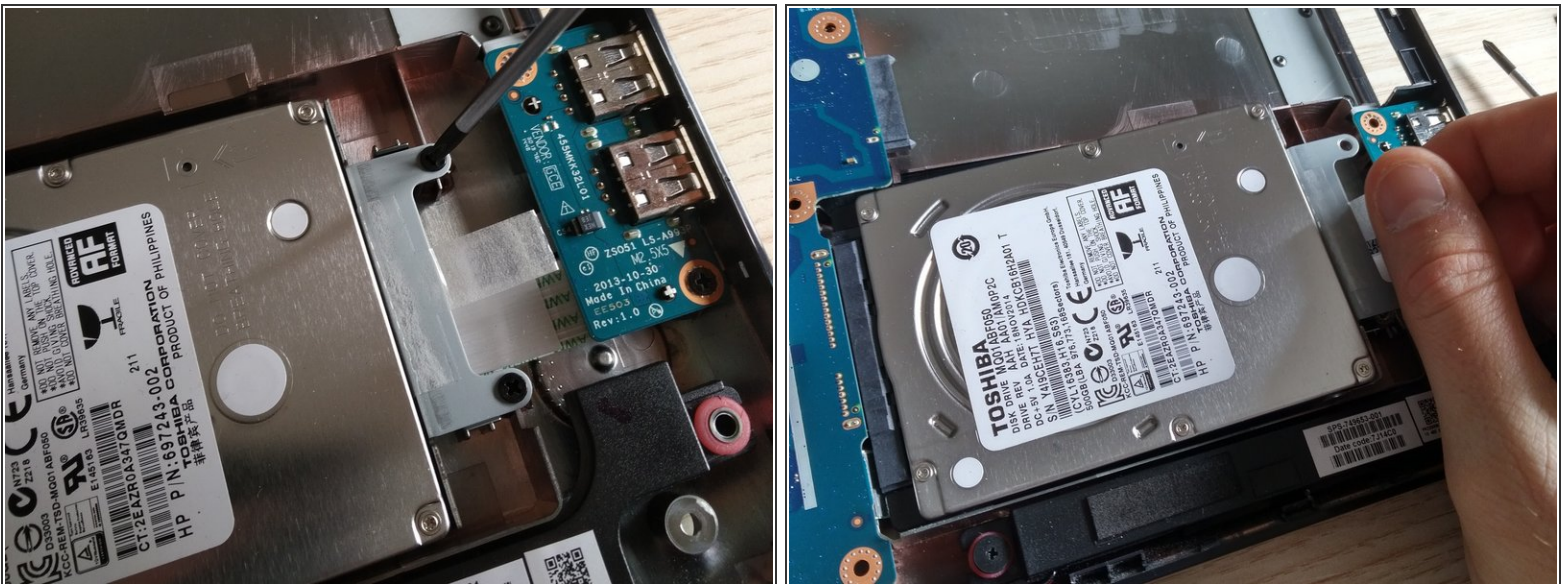


- Use a spudger to remove the tape/sticker.

 Be very gentle as the connector is a hard-to-remove ribbon cable with several small cables. Ripping one of them will damage the ribbon cable, and will thereby damage the screen.

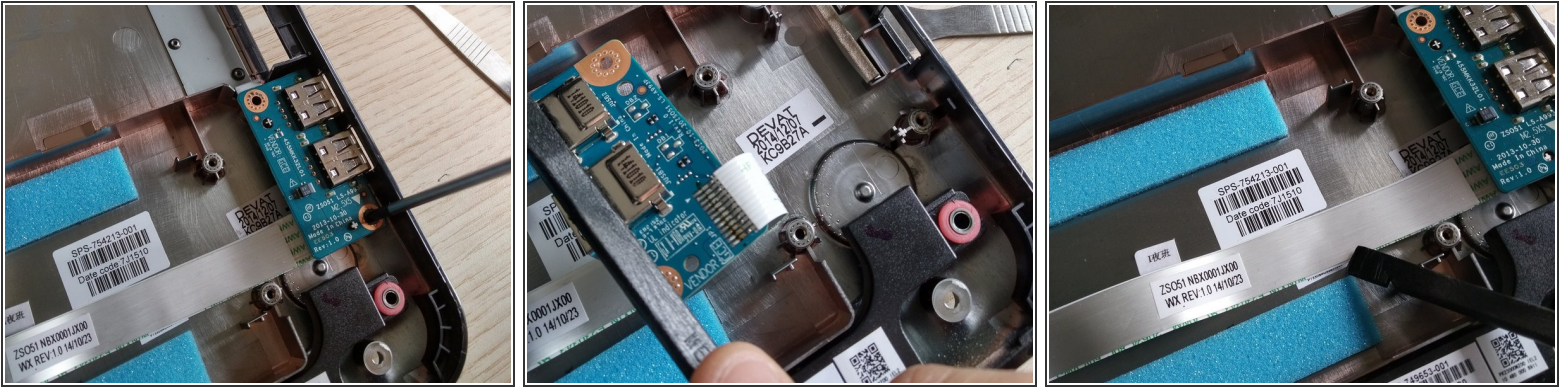
 It is recommended to use an IC extractor to remove the LCD connector (however, you can use two small flathead screwdrivers or tweezers to slide the connector out of the socket).

Step 18 — removing HDD




- Remove the two screws holding the HDD.
- Slide out the HDD.

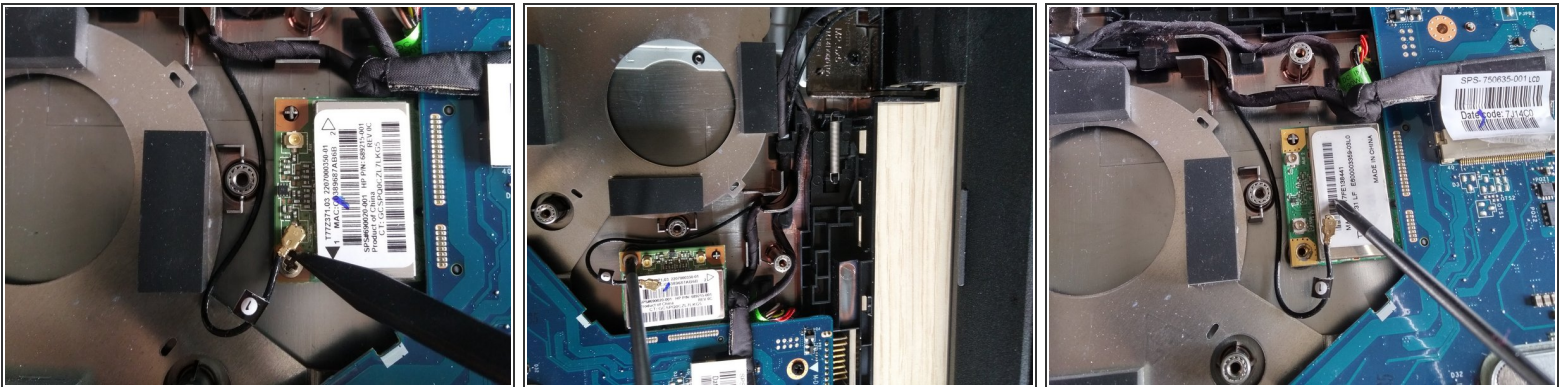
Step 19 — removing usb pcb




- Use a spudger to loosen the cable from the bottom plate.

 The flat ribbon cable is pasted to the bottom plate, and the ribbon cable is soldered to the PCB.

Step 20 — removing the bad Wifi module.

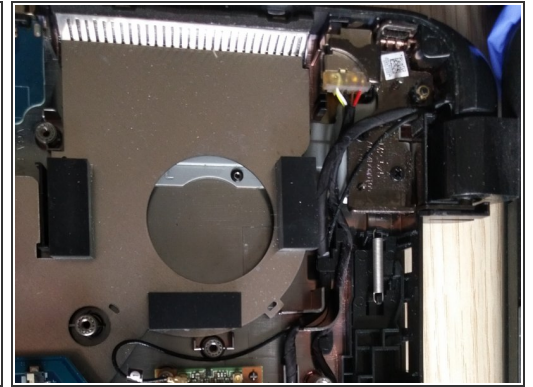
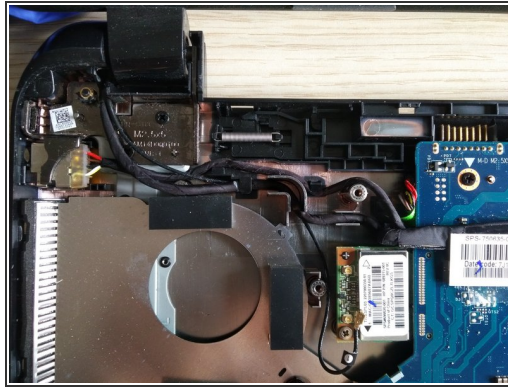
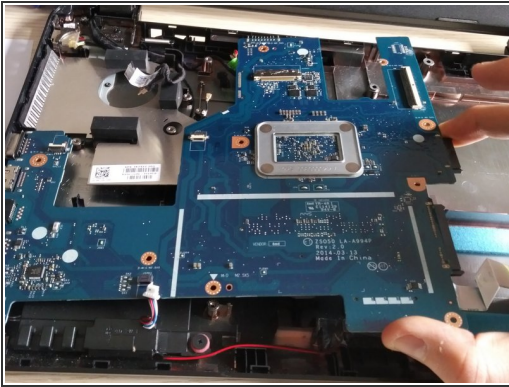


- Remove the golden antenna cable from the socket. Be very careful, and use a spudger.
- Remove the screw.
- The WiFi module will jump up when the screw is removed. Slide the WiFi module out.

 Wear gloves to avoid touching the antenna or the antenna sockets.

- To install the new Wifi module, slide the new WiFi module in, push it down, and drive the screw back in.
- Reattach the antenna.

Step 21 — removing main PVB



- i** In this case I did not remove the main PCB because I would have had to remove the DC jack. It is a very breakable connector, and the wires are very thin. If they are broken the laptop will no longer charge.
- If the DC jack is damaged or broken in your laptop, remove the hinge instead (this is holding the DC power jack in place).

To reassemble your device, follow these instructions in reverse order.