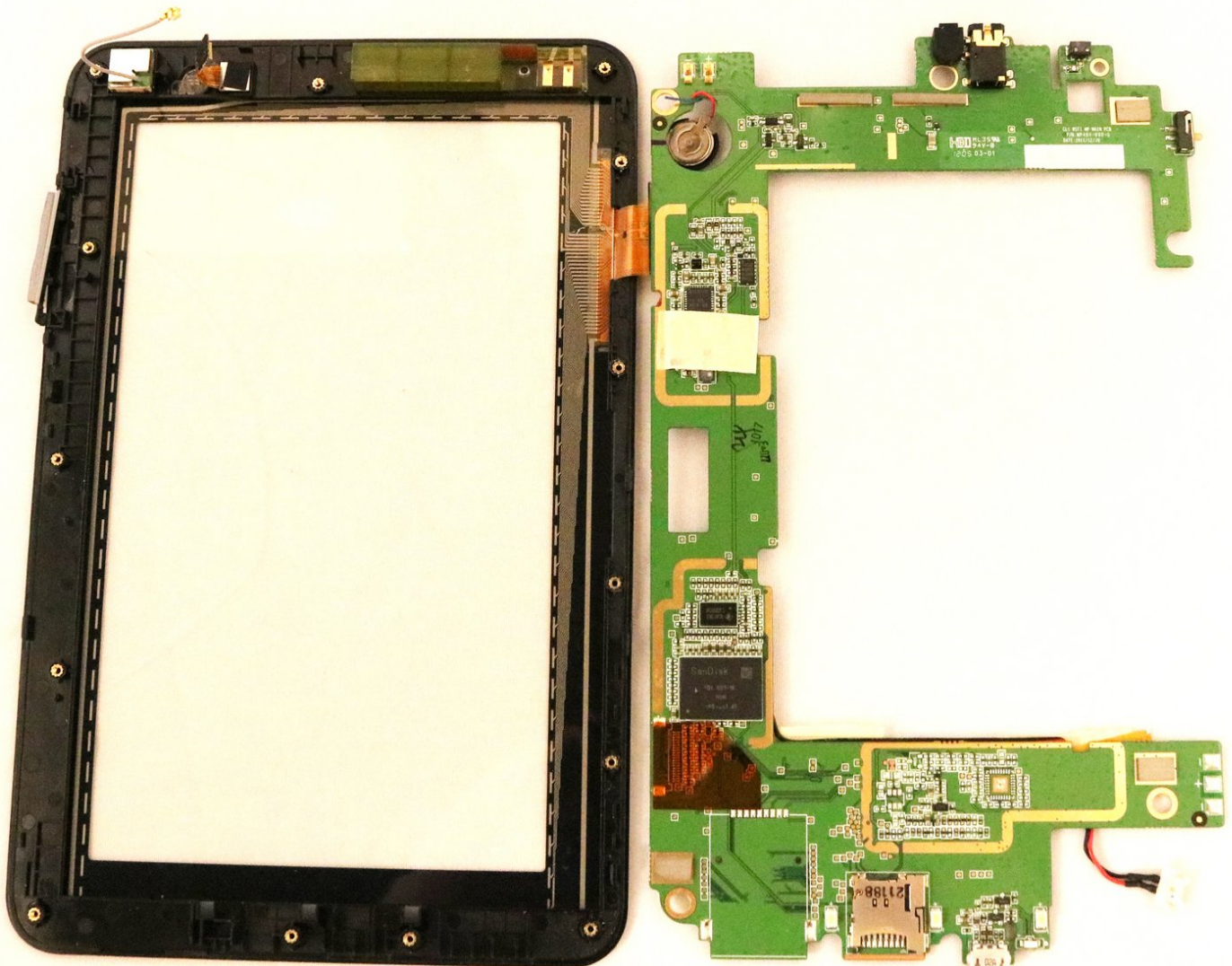




Lenovo IdeaPad A1-07 Motherboard Replacement

The motherboard of the Lenovo IdeaPad A1-07 may...

Written By: Madison Cranmer



INTRODUCTION

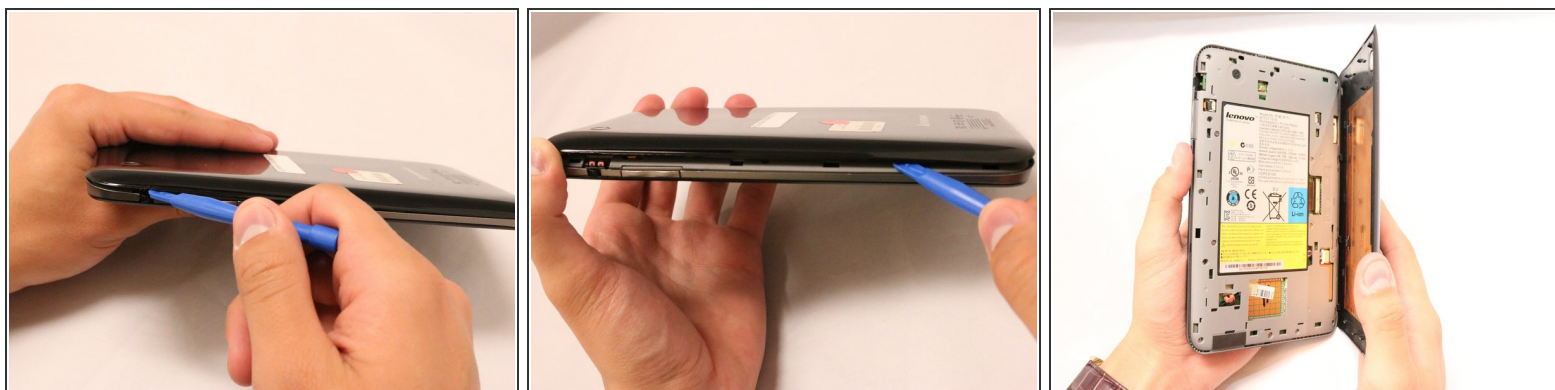
The motherboard of the Lenovo IdeaPad A1-07 may need to be replaced if the tablet has become unresponsive due to a software issue. Over time the motherboard can degrade from constant use or even crack if under a lot of pressure. This guide will walk you through how to carefully take the tablet apart to access and remove the motherboard from the device.



TOOLS:

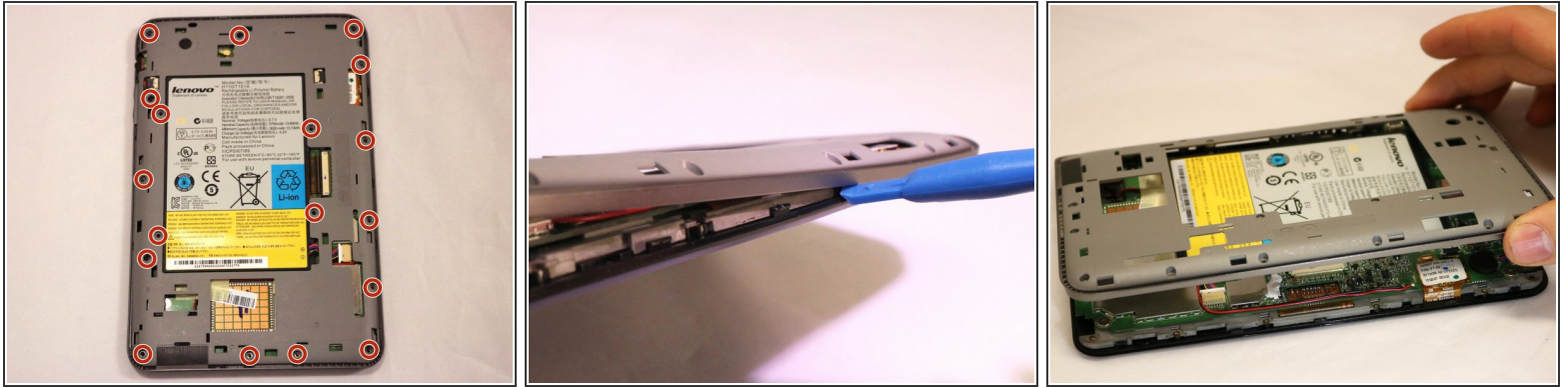
- [iFixit Opening Tool](#) (1)
- [Phillips #000 Screwdriver](#) (1)
- [Metal Spudger](#) (1)
- [Heavy-Duty Spudger](#) (1)

Step 1 — Back Cover/Midframe



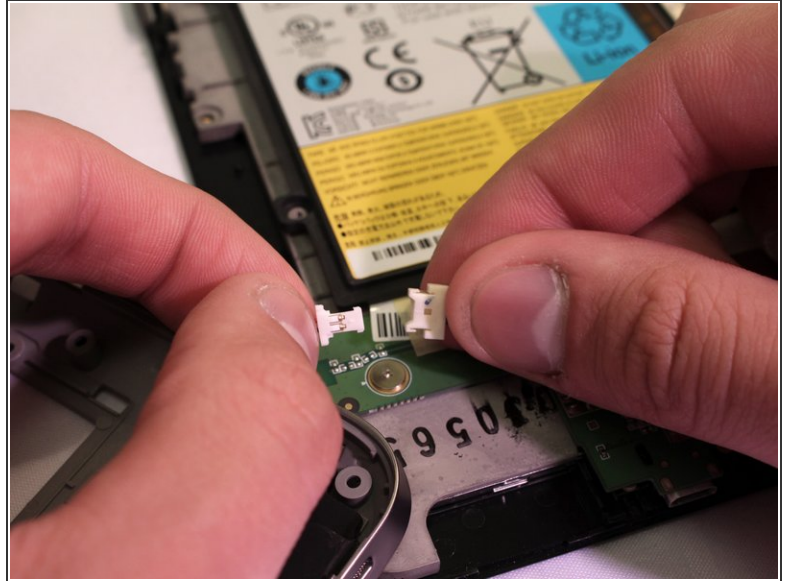
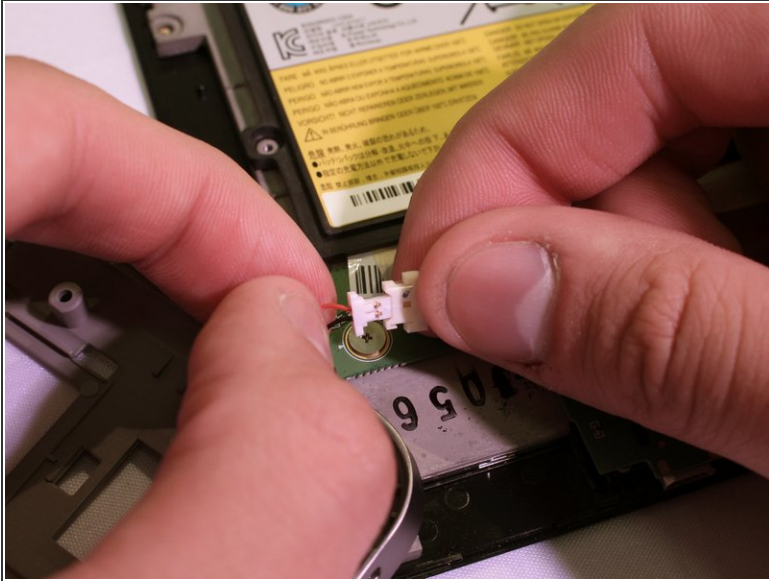
- With the blue plastic opening tool, use the lock screen switch by the volume button as an access point to gently lift the back cover off.
 - Wedge the opening tool until you start hearing the back cover popping off the body of the device.
 - Slide the opening tool down the length of the device.
- i** Once it is about half way off, you can use your thumb to pull the rest of the back cover off.

Step 2



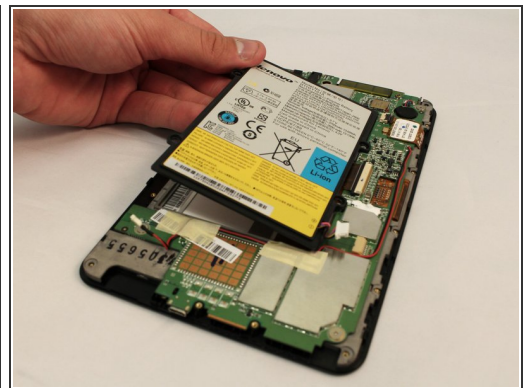
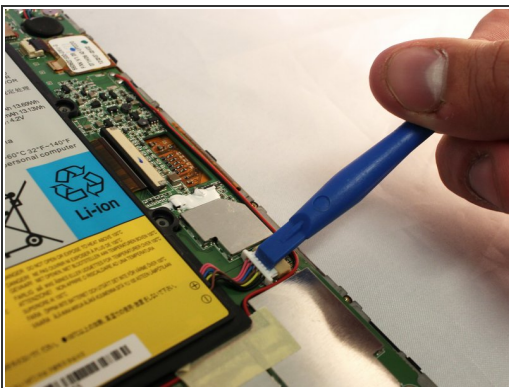
- Using a Phillips #000 screwdriver, remove all 18 of the 4mm screws.
- With the blue plastic opening tool, gently wedge the tool between the screen and the gray frame until you feel resistance.
- ⓘ Do not force the frame off because you can break off the teeth securing the frame to the screen.
- Push in the teeth with the blue plastic opening tool, towards the center of the device, and gently pull off the frame.
- ⓘ The gray frame will still be connected to the device by a pair of wires from the motherboard to the speaker.

Step 3



- i The speaker in the grey frame is connected to the motherboard by the white plastic connector.
- Disconnect the speaker by separating the two sides of the speaker connector.

Step 4 — Battery



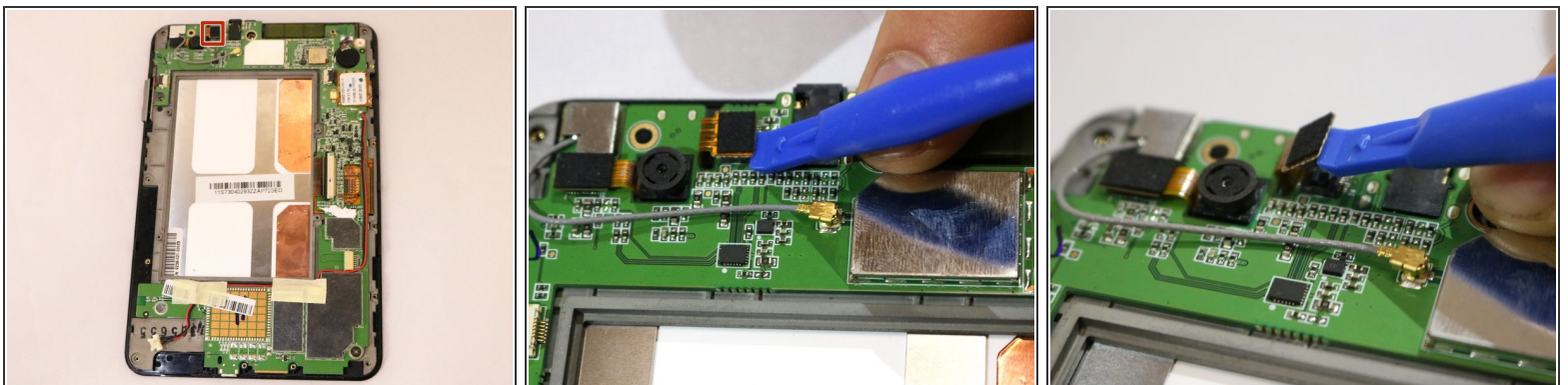
- Use a plastic opening tool to push the white battery connector out of its socket on the motherboard.
- Lift the battery away from the device.

Step 5 — Motherboard



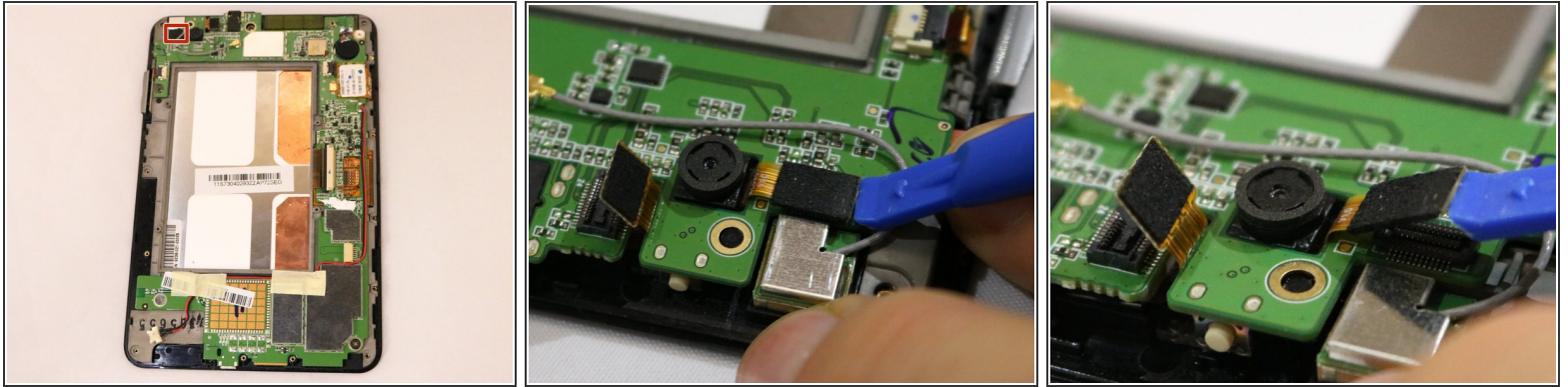
- Remove the three, 3mm screws holding the motherboard to the screen using the PH #000 screwdriver.
- ⓘ You will have to disconnect all the connectors on the motherboard.
- The first connector to remove is in the center of the motherboard.
- Use the blue plastic opening tool to slide the little black retainer, relieving pressure on the brown ribbon cable.
- Use the blue opening tool to pull the brown ribbon cable out of the connector.

Step 6



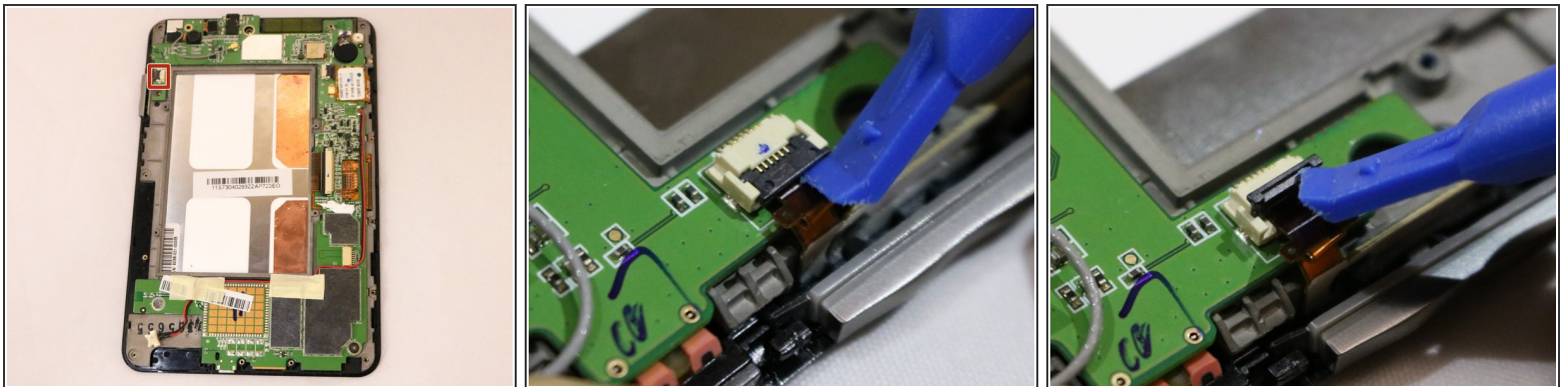
- On the top left of the motherboard, to the right of the back camera is another connector.
- To disconnect, use a blue plastic opening tool to lift and pry it up.
- Once it snaps up out of place, it has been disconnected.

Step 7



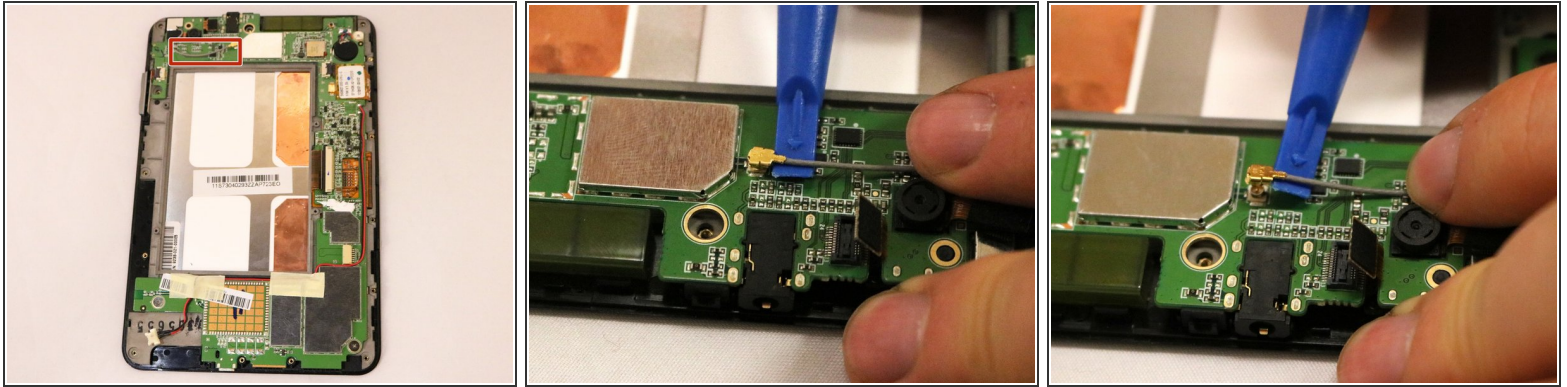
- Using the same process as the previous connector, disconnect a similar connector just to the left of the back camera.
- Once it snaps up out of place, it has been disconnected.

Step 8



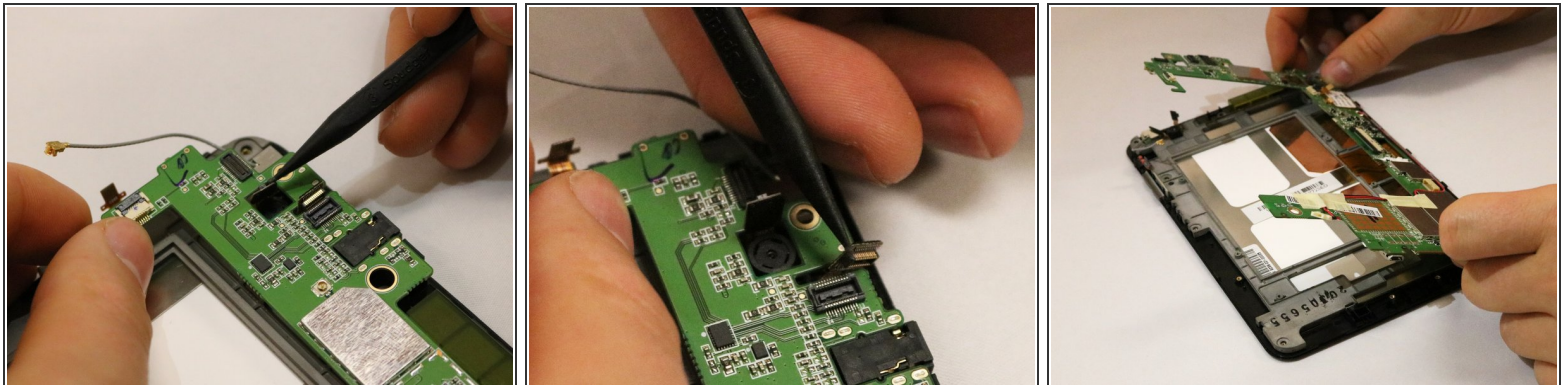
- On the top left of the motherboard, just next to the volume button, is another connector.
- Use a blue plastic opening tool to lift up on the black lever.
- Once it is pushed up, the brown ribbon can be pulled out using the spudger.

Step 9



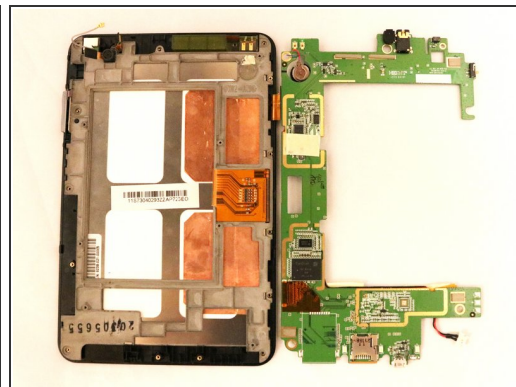
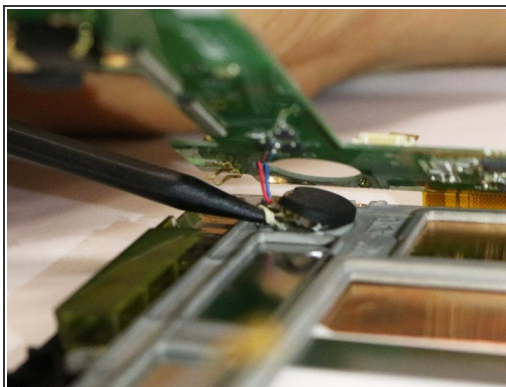
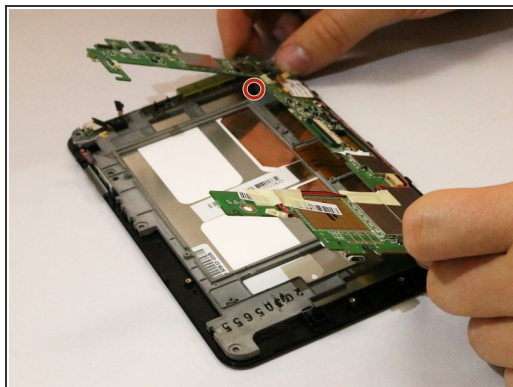
- The final connector is a grey cable with a gold tip called the coaxial cable.
- To disconnect, slide the blue plastic opening tool up to the base of the tip.
- Twist the opening tool to gently lift up the coaxial cable.
- ⓘ The coaxial cable is snapped in tightly and may take a little bit of force.

Step 10



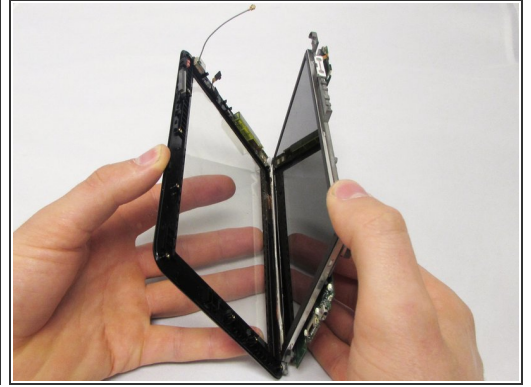
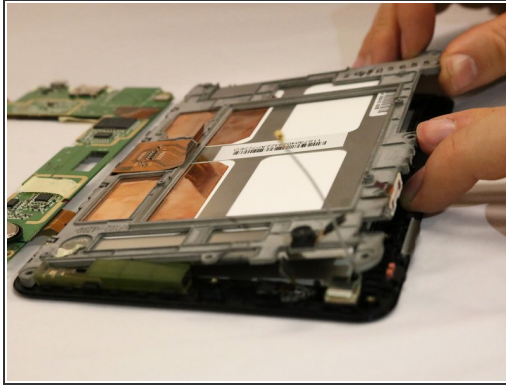
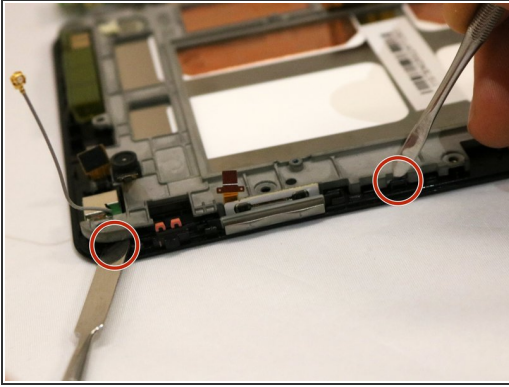
- While lifting the motherboard, you need to push the connector heads down through the holes that they come through.
- ⓘ With the cameras oriented on top, there will still be one ribbon on the right of the motherboard connected to the screen.
- Simply lift the motherboard on the left side and flip it over to the right like turning a page.

Step 11



- Once all the connectors are pushed through, the last thing still connecting the motherboard to the screen is the motherboard battery.
- ⓘ The connector is fixed to the metal frame by adhesive.
- Using the black spudger, gently pry up the connector by pulling at the base of the battery.

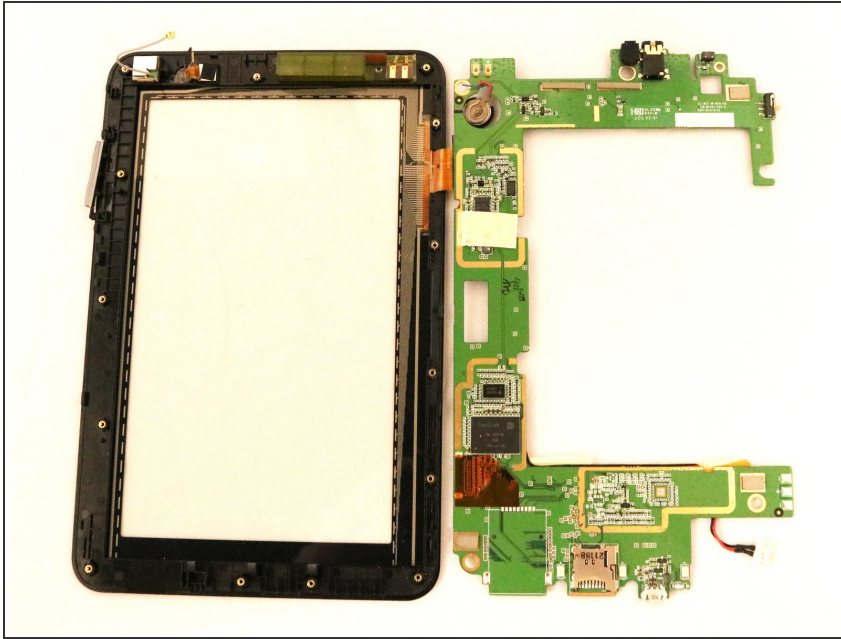
Step 12



i Now you will be free to detach the screen from the front cover.

- With the device face down, you can pull up on the top left side of the metal frame while pushing out a plastic tooth using two metal spudgers.
 - Gently lift until you feel the tension of the adhesive on the right side.
 - Once you feel tension, slide a metal spudger tool down the length of the right side to remove the adhesive.
- i** Be sure to move the tool straight down the side. There is a thin copper film that can be crumpled if the spudger enters from the side.

Step 13



- The motherboard is soldered to the black screen frame by an orange film tab.
- ⓘ With the screen now removed, it too can be replaced.

To reassemble your device, follow these instructions in reverse order.