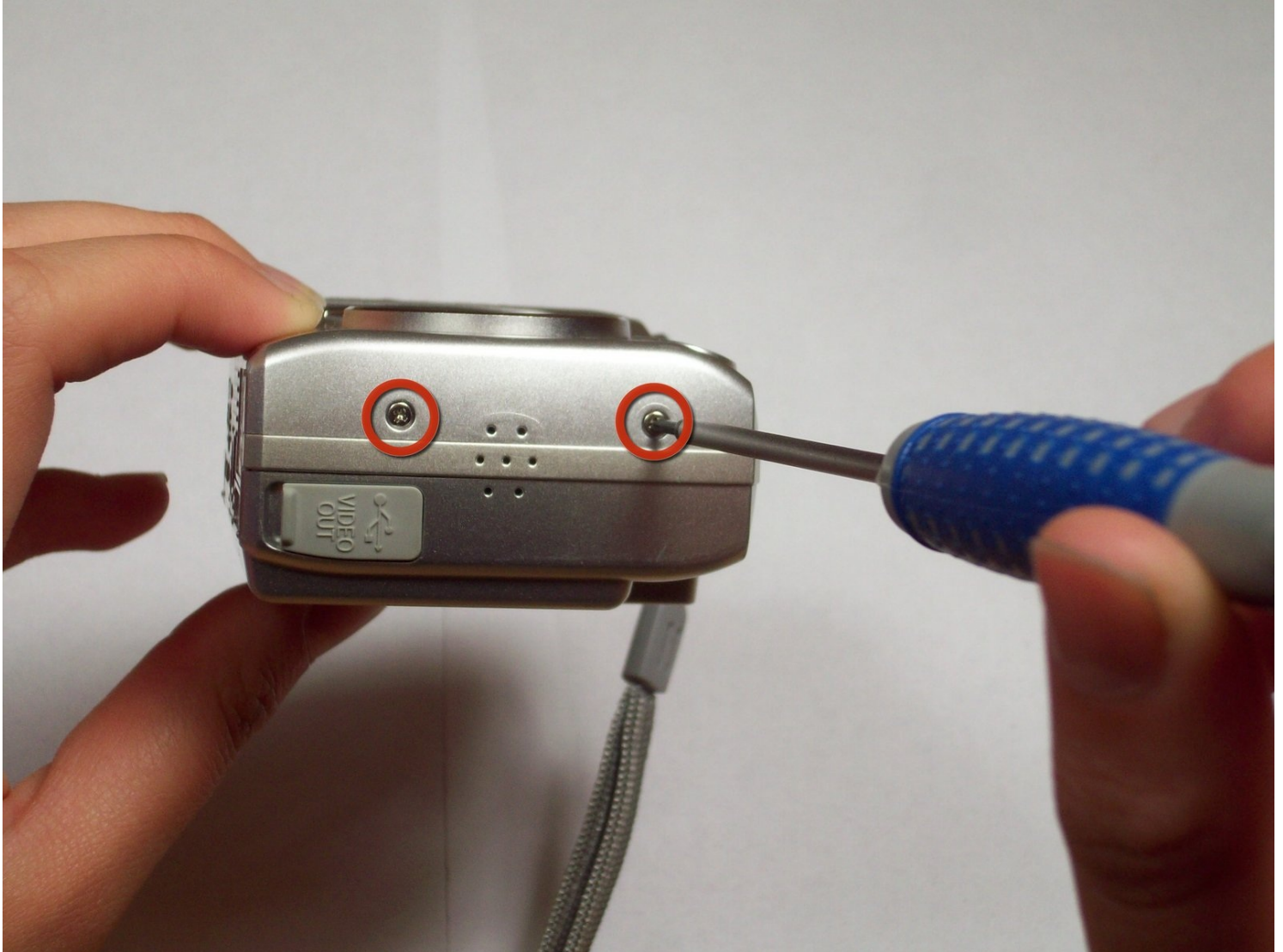




Removing Nikon Coolpix 4600 Front and Rear case

This installation guide will help you remove...

Written By: Nathan Sperling



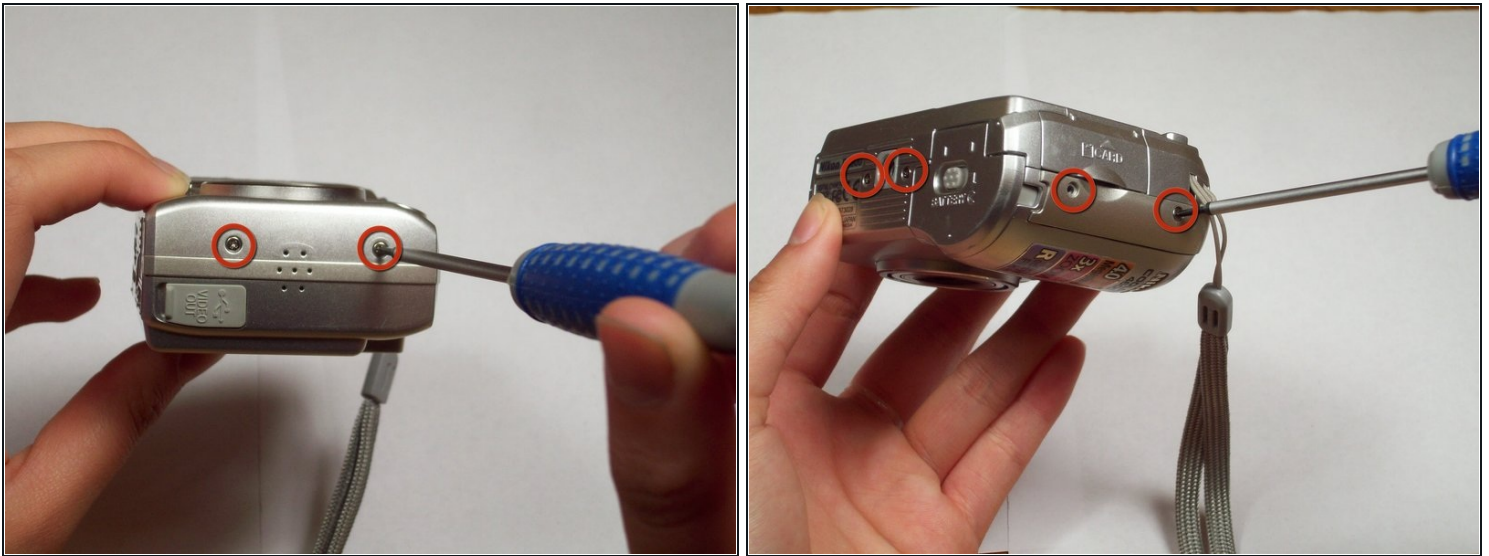
INTRODUCTION

This installation guide will help you remove the rear and front casing of your Nikon Coolpix 4600.

TOOLS:

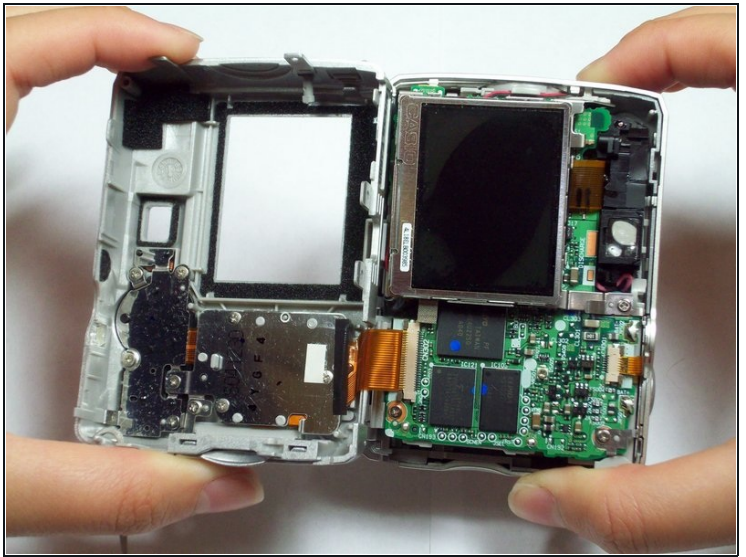
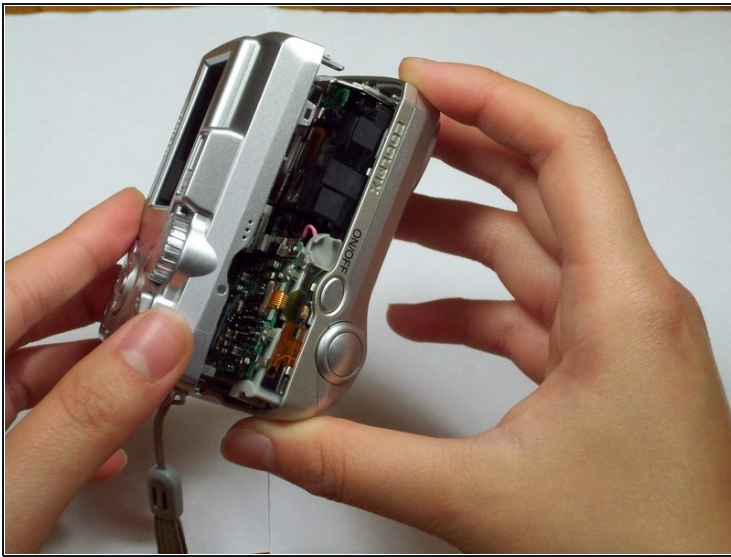
Phillips #00 Screwdriver (1)

Step 1 — Front and Rear Case



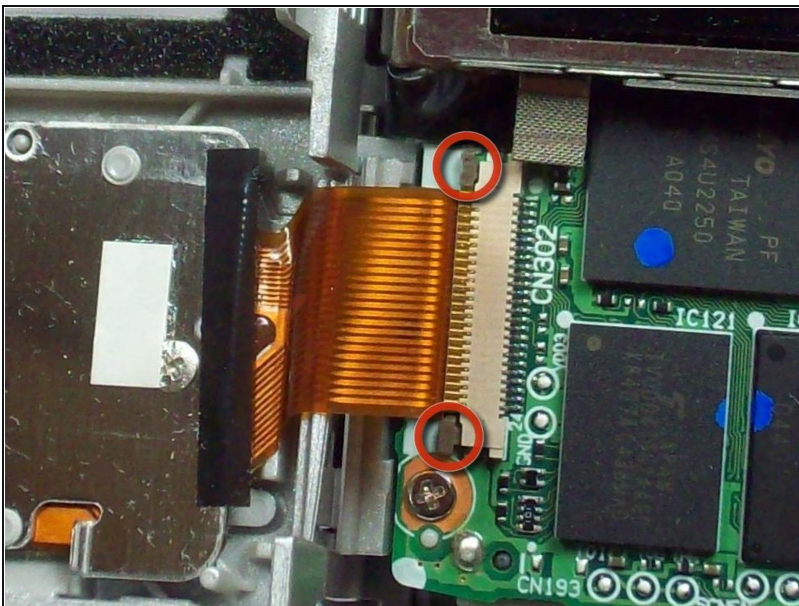
- Locate the six screws on the outside of the camera (2 3.3 mm on the bottom, 2 5.25 mm on the left, and 2 5.25 mm on the right).
- Using a Phillips 00 screwdriver, remove all of the six screws.

Step 2



- Carefully pull the front and back case apart.
 - ❗ The front case is attached to internal components and cannot be removed independently.

Step 3



- Look closely at the connection between the ribbon cable and the motherboard. Locate the two grey tabs on either side of the connecting bracket.
- Slide the grey tabs toward the bottom of camera. Gently disconnect the ribbon cable from the motherboard.
- After disconnecting the data ribbon, you can now separate the back case from the front case.

To reassemble your device, follow these instructions in reverse order.