



# Panasonic Lumix DMC-FX07 Memory Card Replacement

Replace your memory card so you can take pictures.

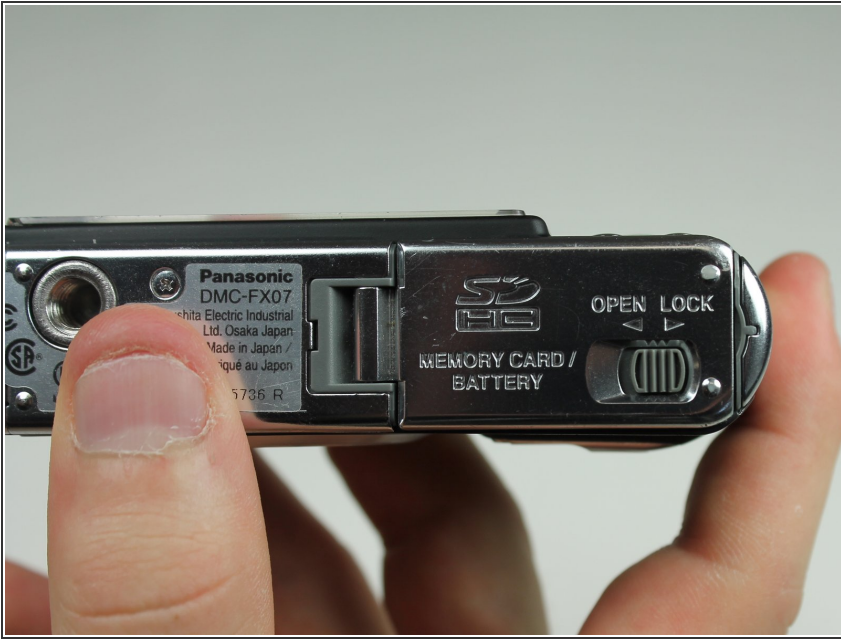
Written By: Karissa



## INTRODUCTION

The guide will take you through the steps of how to remove the memory card.

## Step 1 — Battery



- Move the switch on the battery door to the Open position.
- ⓘ The door will automatically swing open after you let it go.

## Step 2



- Push the small gray tab on the top right corner to the left. The battery will pop out slightly.
- Keep your finger clear of the battery when it pops out.

### Step 3 — Memory Card



- Push the memory card in and let go.
- ⓘ The memory card will pop out slightly.
- Pull out the memory card.

To reassemble your device, follow these instructions in reverse order.