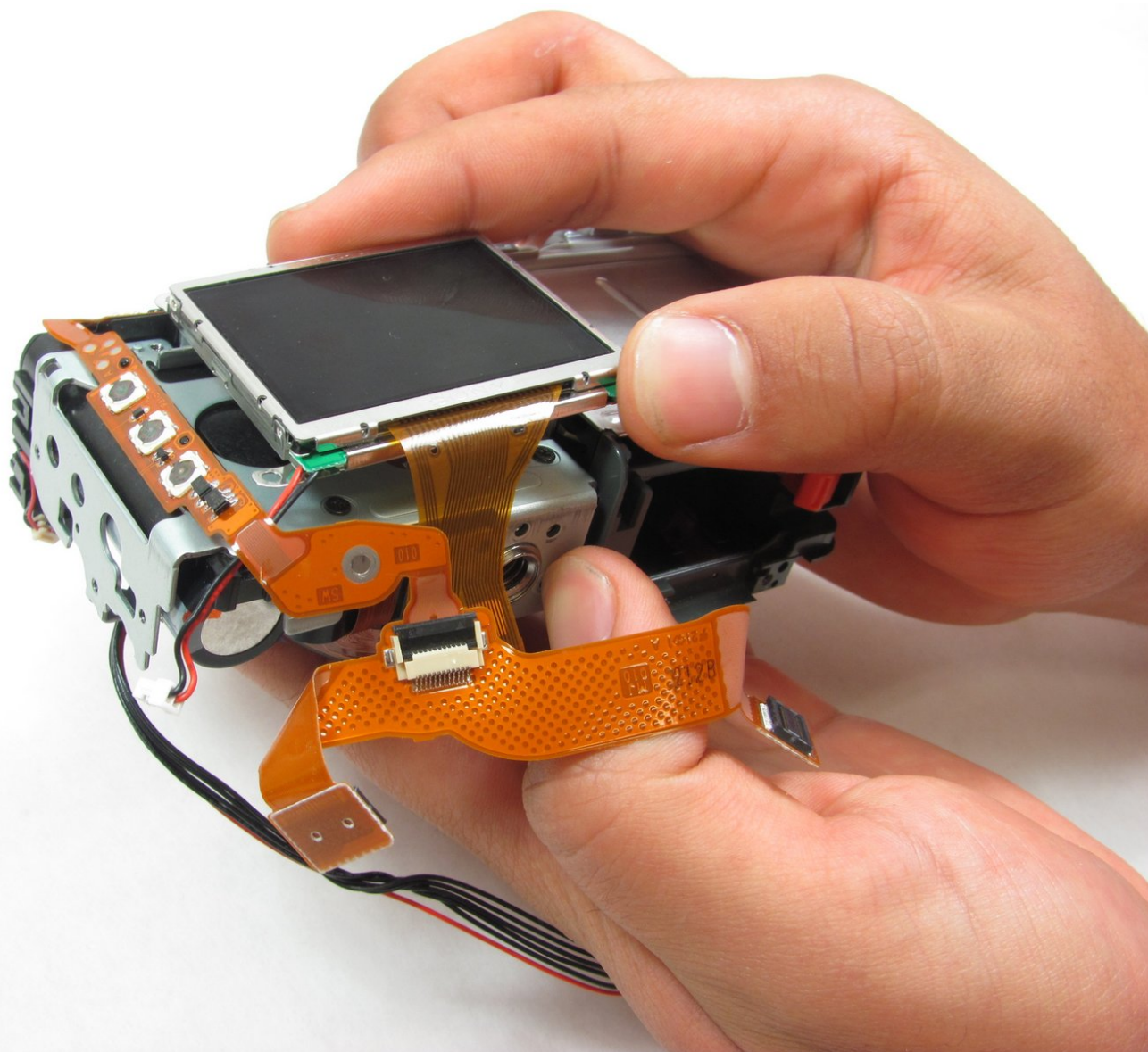




# Canon PowerShot S50 LCD Screen Replacement

Replace the LCD Screen in your Canon PowerShot S50.

Written By: Jacob



---

## INTRODUCTION

The 1.8 inch LCD Screen is the main method of interaction between the user and the camera. If the screen malfunctions, it may be useful to replace it. New screens can be bought [here](#)

---

### TOOLS:

- [Fingers](#) (1)
  - [Phillips #00 Screwdriver](#) (1)
  - [Anti-Static Project Tray](#) (1)
  - [Tweezers](#) (1)
  - [iFixit Opening Tools](#) (1)
  - [Magnetic Project Mat](#) (1)
-

## Step 1 — Battery



- Place camera LCD side up and press up on the battery door.
- Let it swing open until you can see the battery inside.

## Step 2



- Press down on the orange plastic.
- This will gently eject the battery from its compartment.

## Step 3



- Holding the edges, slide out the battery.

## Step 4 — Front Panel/Battery Door



- Look at the camera from the side with the lanyard and 4 screws.
- Remove the two 3.4 mm screws on the metallic colored part.

## Step 5



- Remove the 3mm screw on the top left.
- *i* NOTE: When reassembling, it is helpful to put the top screw back in before placing the front cover back on the camera.
- Now remove the 5.3mm screw on the bottom.

## Step 6



- Place the camera LCD side down.
- Remove the two 5.3mm screws by the battery door.

## Step 7



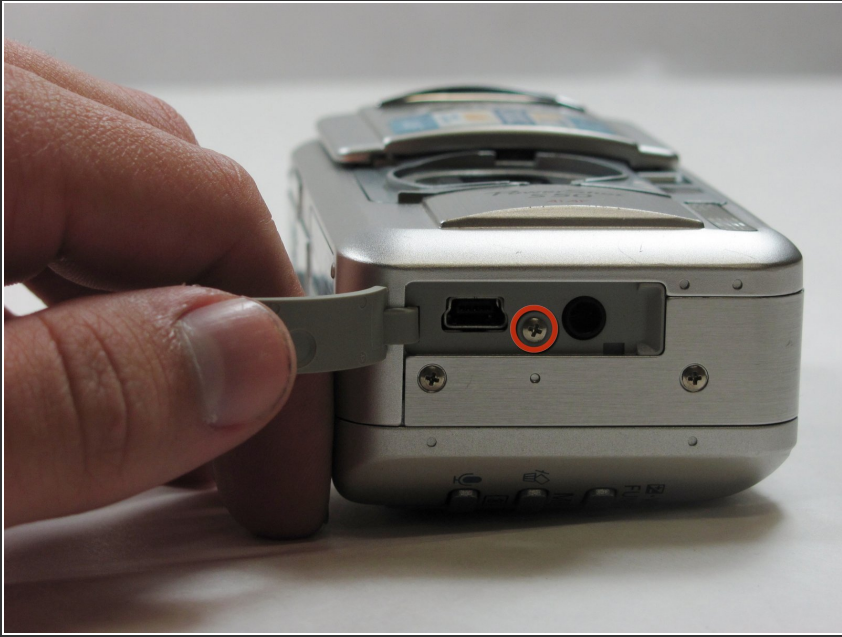
- Remove the four 3.4mm screws on the bottom of the camera around the tripod mount.
- ⓘ Make sure to keep these screws separate from the previous 5.3 mm screws.

## Step 8



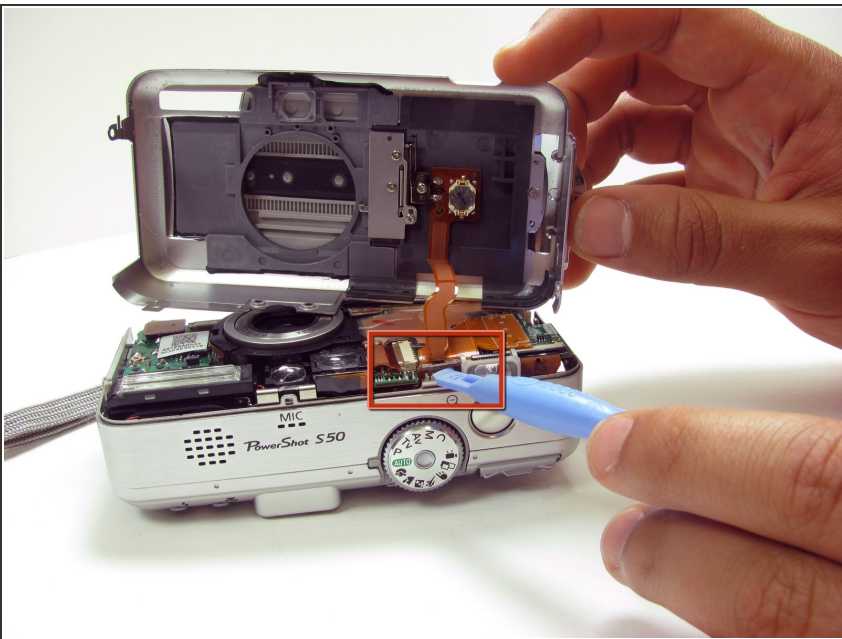
- Stand the camera back up.
- Remove the two 3.6mm screws on the side with the A/V Out port.

## Step 9



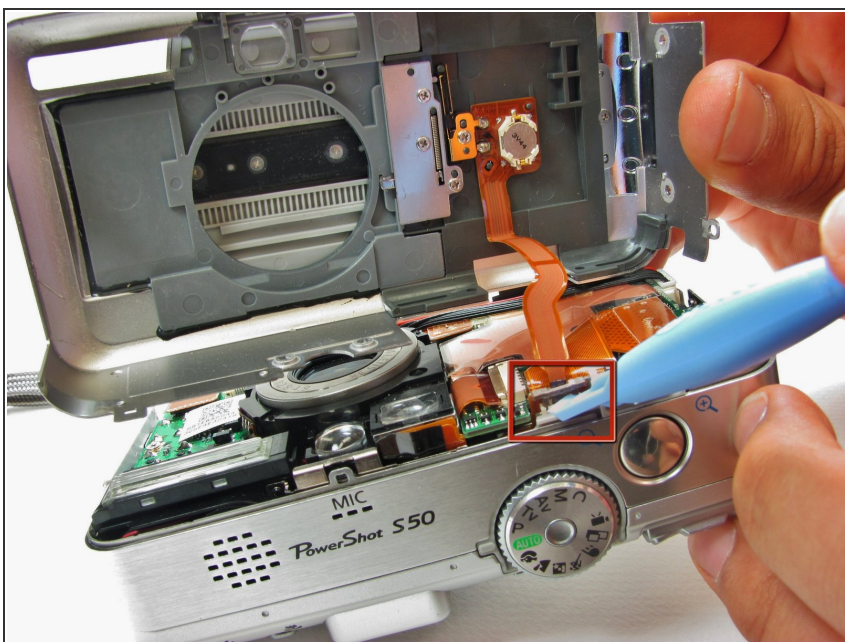
- Lift open the rubber flap covering the A/V Out port.
- Remove the 3.4mm screw in the center.
- ⓘ During reassembly, put the A/V out rubber door on before replacing the front panel of the camera

## Step 10



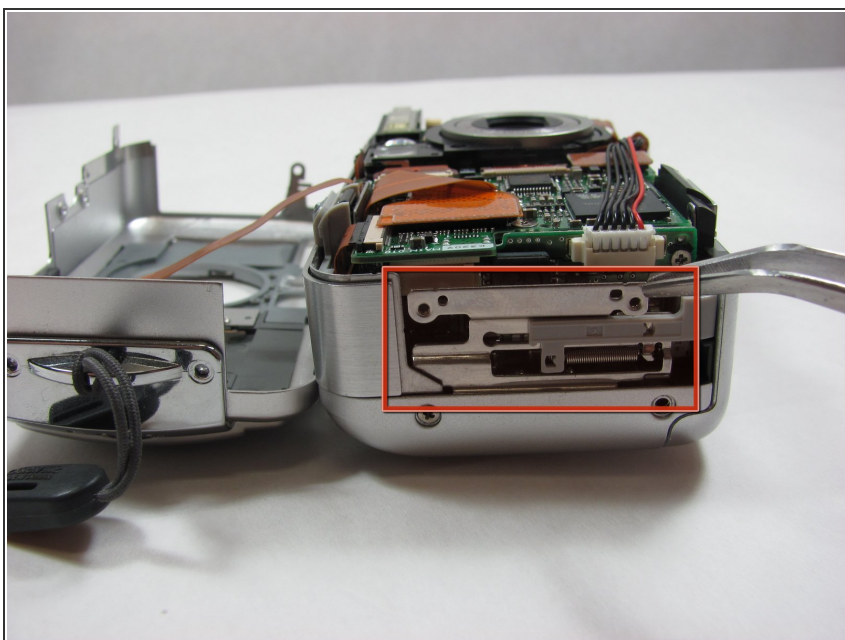
- Use a spudger and gently open up the front panel of the camera.
- ⚠ A thin plastic ribbon will stay connected by a brown piece to front panel of the camera.

## Step 11



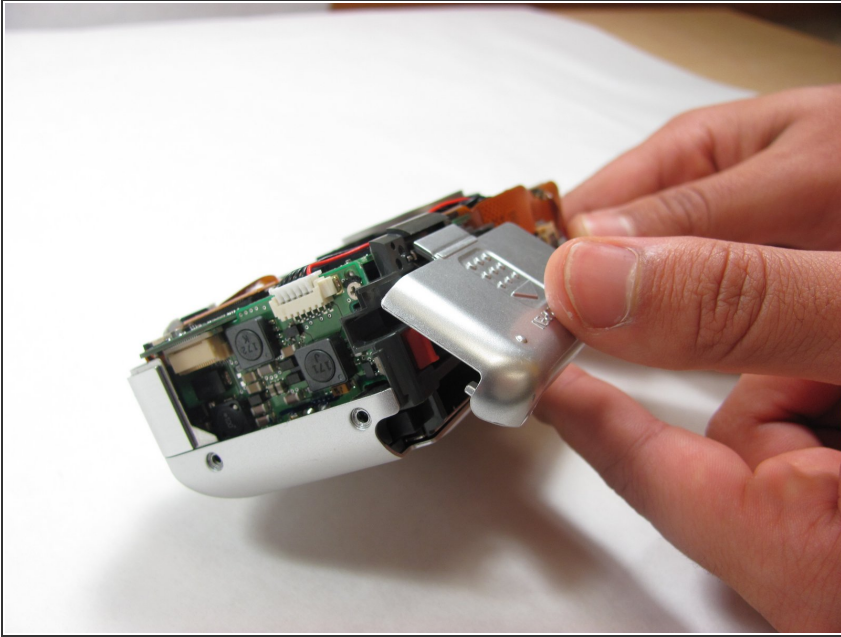
- There will be a brown plastic piece keeping the thin plastic ribbon in place.
- Use the spudger to pull out the brown plastic piece attached to the orange plastic.

## Step 12



- Use a pair of tweezers and remove the metal piece inside the camera.

## Step 13



- Remove the battery door
- ⓘ NOTE: Putting this back on requires aligning the spring on the back of the door with the hole on the camera

## Step 14 — Right Motherboard



- Disconnect the two plastic ribbons on the lower half of the right motherboard.
- ⓘ NOTE: You will have to lift up the brown plastic piece in order to pull out the second ribbon wire.

## Step 15



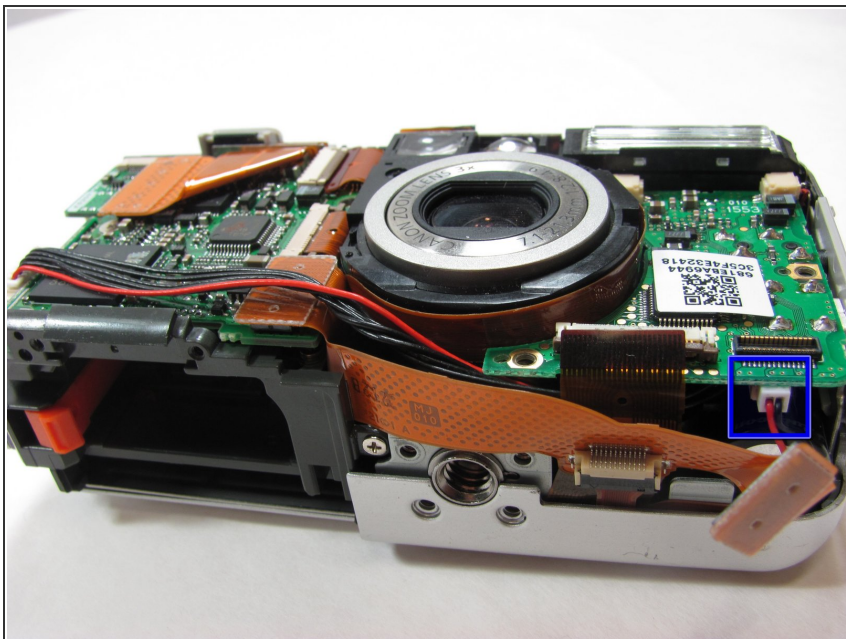
- Remove the two 3.4mm screws on the right motherboard.

## Step 16



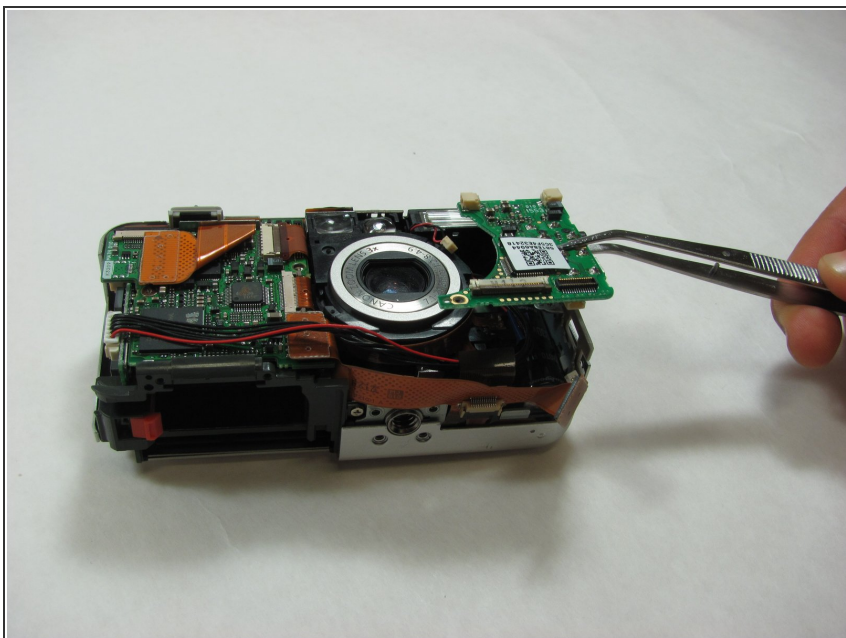
- Disconnect the two wired plugs below the flash.

## Step 17



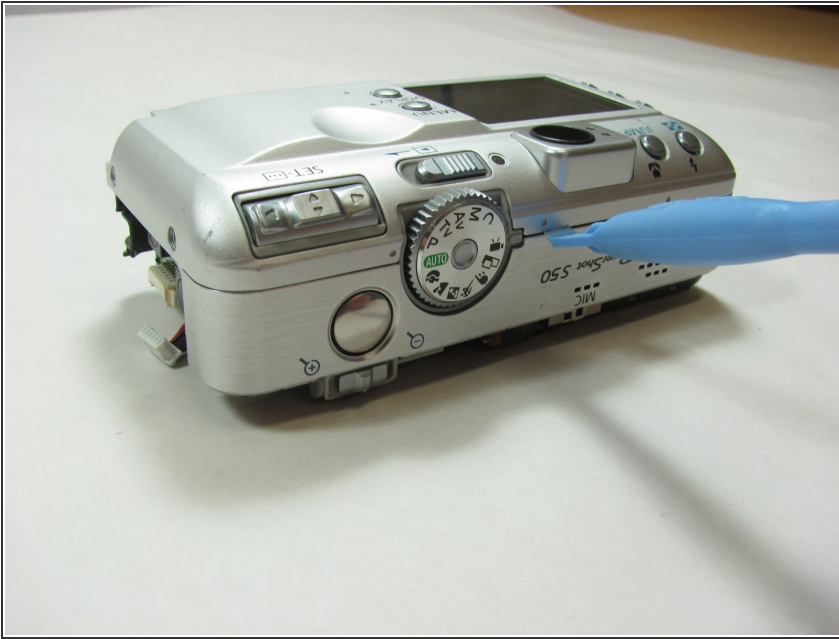
- Disconnect the wired plug at the bottom of the right motherboard.

## Step 18



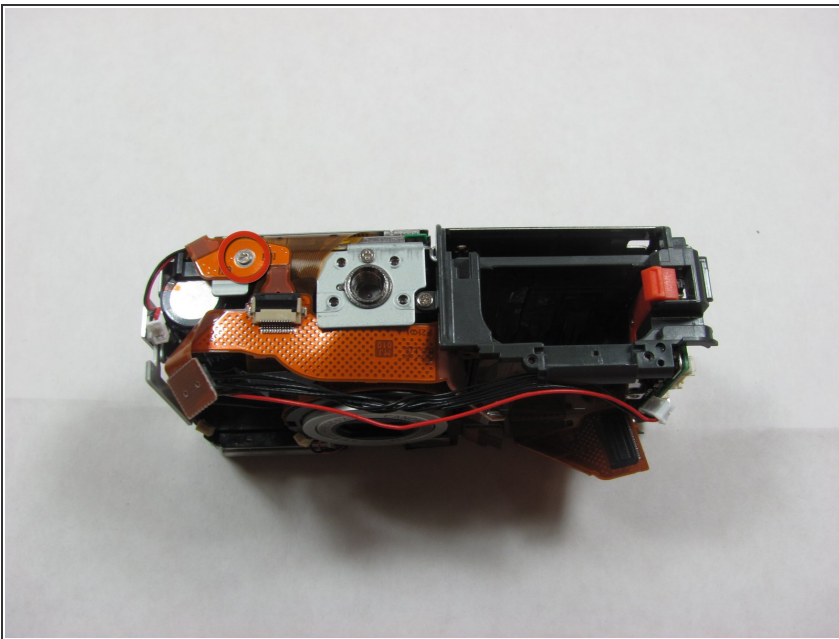
- Use a pair of tweezers to pull the right motherboard away from the main body of the camera.

## Step 19 — Outer Casing



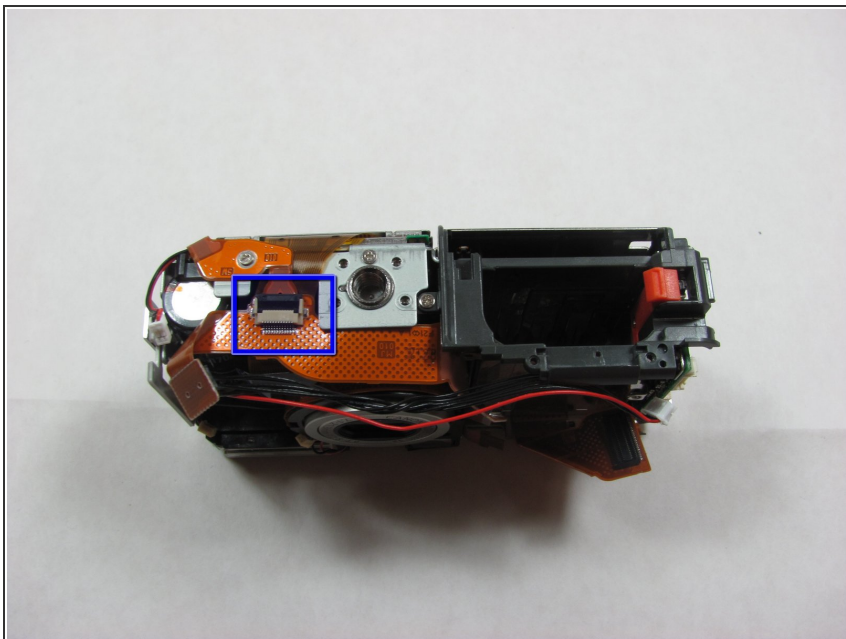
- Using a spudger, gently separate the back panel from the rest of the camera and remove it.

## Step 20 — LCD Screen



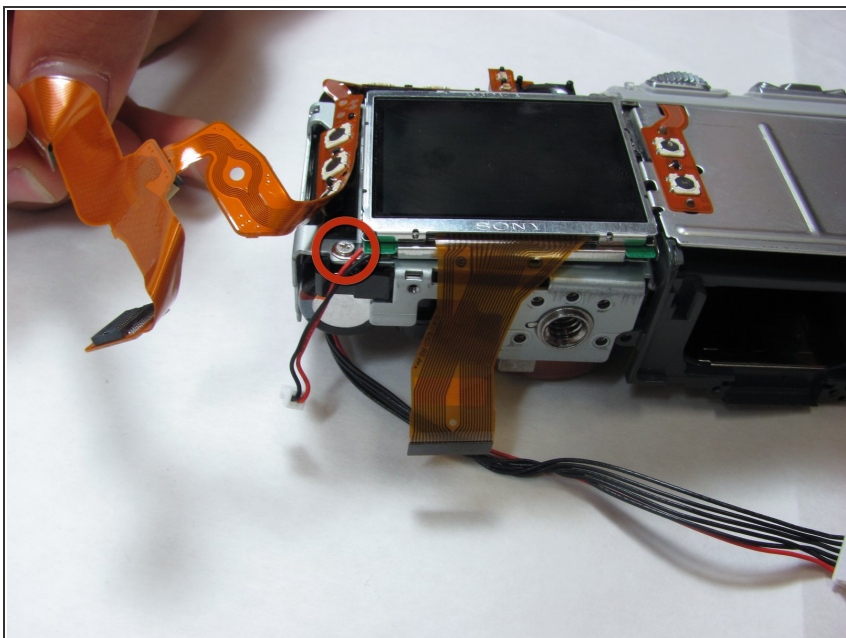
- Remove the 2.6mm screw on the bottom of the camera located directly under the LCD screen.
- This screw should be holding two pieces of orange film down.
- ⓘ When replacing this screw, make sure that the orange film is secure below it before screwing it in.

## Step 21



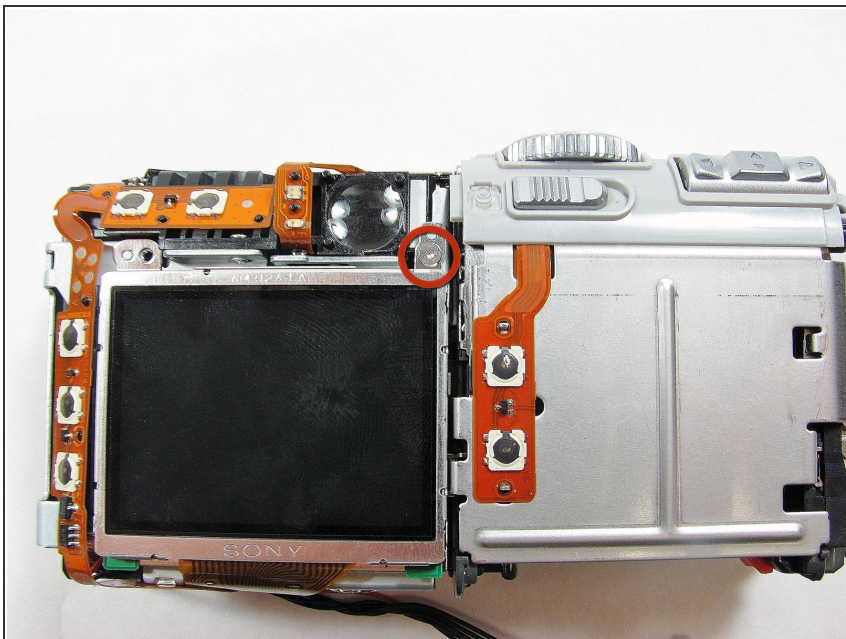
- Disconnect the film from the bottom of the camera under the LCD Screen.

## Step 22



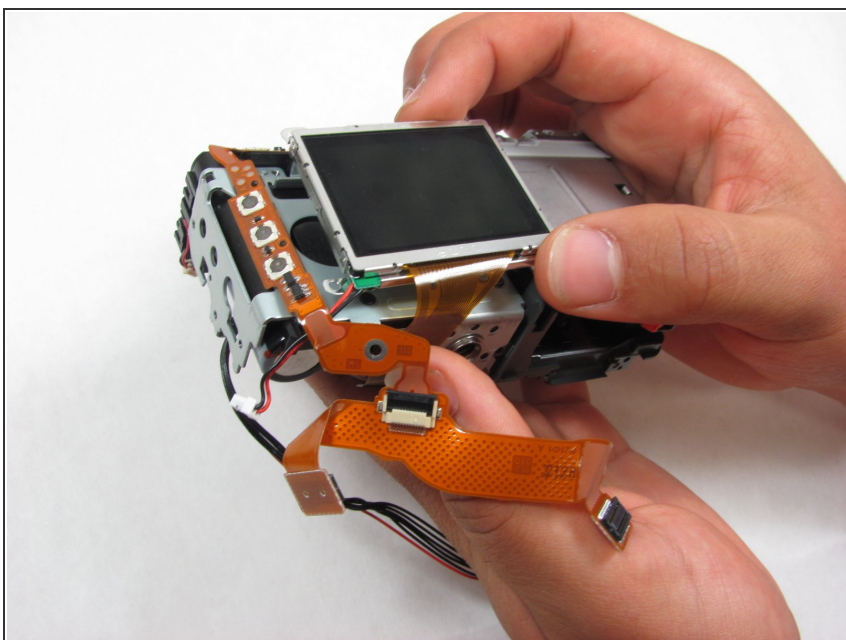
- Remove the 3.3mm screw on the bottom left of the LCD screen.

## Step 23



- Remove the 2.4mm screw located just to the upper right of the LCD Screen.

## Step 24



- Gently remove the LCD Screen.

To reassemble your device, follow these instructions in reverse order.