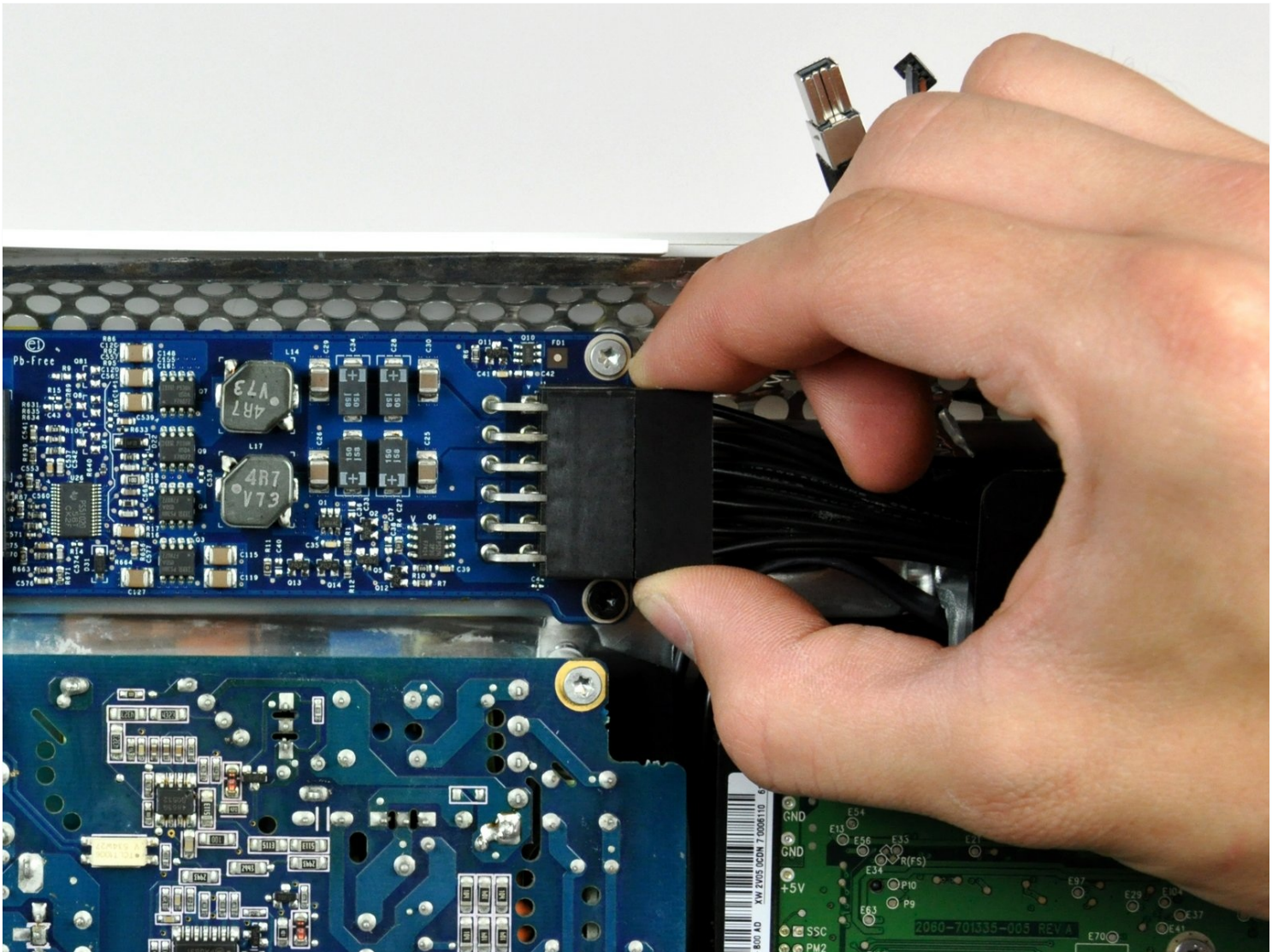




iMac G5 17" Model A1144 DC to DC Board Replacement

The ins and outs of replacing your DC to DC board.

Written By: Walter Galan



INTRODUCTION

The ins and outs of replacing your DC to DC board.

TOOLS:


Phillips #1 Screwdriver (1)
Plastic Cards (1)
TR10 Torx Security Screwdriver (1)
T6 Torx Screwdriver (1)
TR8 Torx Security Screwdriver (1)

PARTS:


iMac G5 17" 1.9 GHz DC-to-DC Board (1)

Step 1 — Access Door



 Before you work on the computer, unplug the computer and press the power button for 20-30 seconds to drain the stored energy in the power supply.

- Loosen the two Phillips screws securing the access door to your iMac.

 These screws are captive in the access door.

Step 2



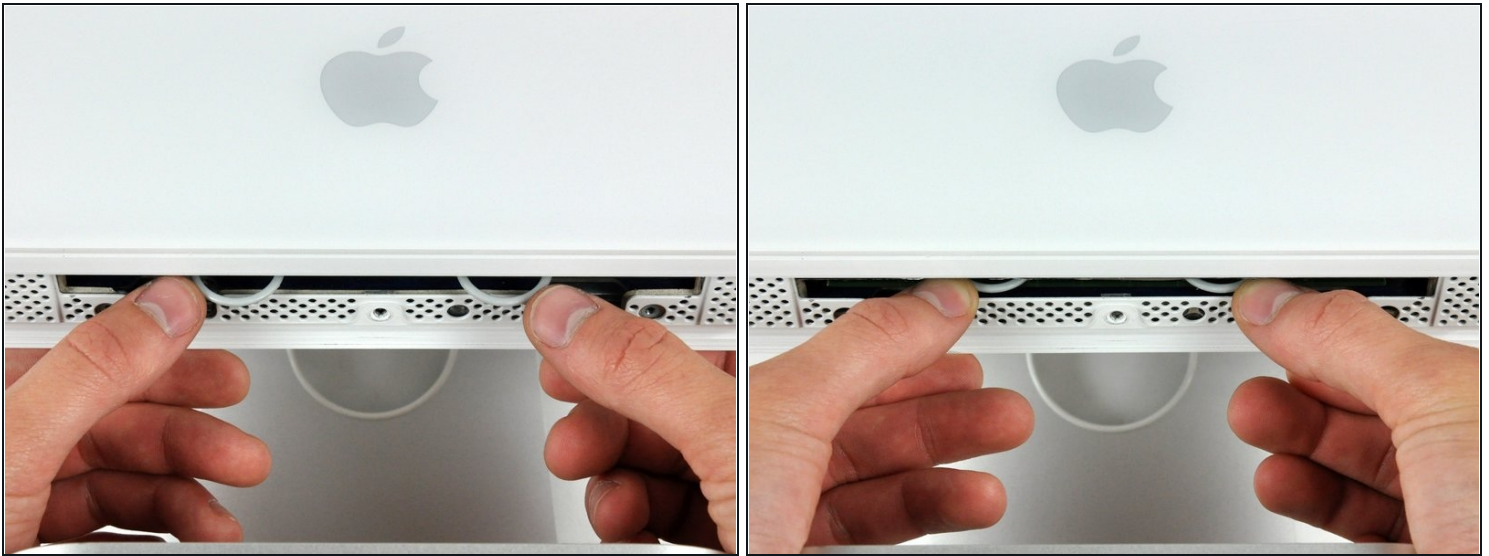
- Remove the access door from your iMac.

Step 3 — Front Bezel



- Remove the three T8 Torx screws securing the front bezel to the rear panel.

Step 4



① Orient the iMac face-up, on its backside.

- Use your thumbs to press both RAM arms in past the front bezel for enough clearance to lift it off the rear case.

Step 5



- While holding the RAM arms in with your thumbs, lift the lower edge of the front bezel enough to clear the rear case.

Step 6



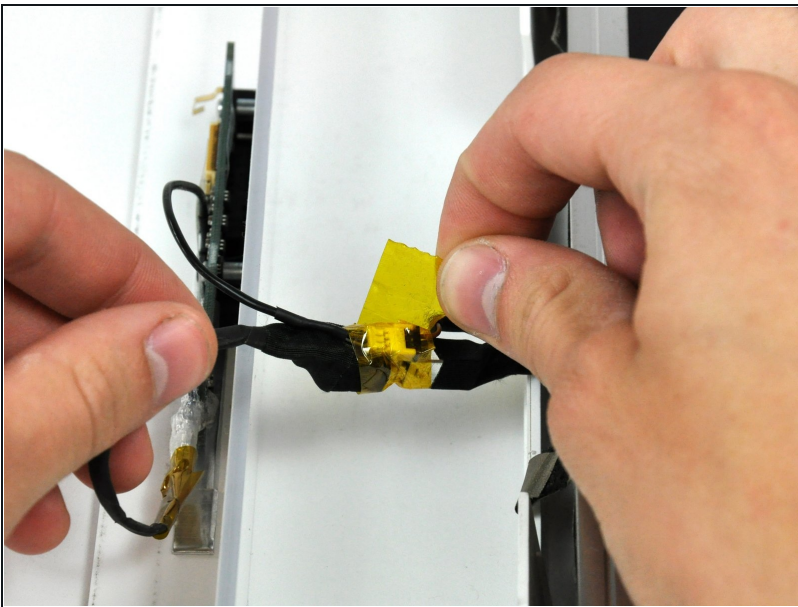
- ① Re-orient your iMac so it sits upright on the stand.
- Insert a [plastic card](#) up into the corner of the air vent slot at the top of the rear case.
- Push the card toward the top of the iMac to release the front bezel latch.
- Pull the front bezel away from the rear case.
- Repeat this process for the other side of the front bezel.
- ① It may be necessary to apply several layers of duct tape to the top of the access card to aid in releasing the latches.
- ① If the bezel refuses to release, try pressing the lower edge back onto the rear case and repeat this opening process.

Step 7



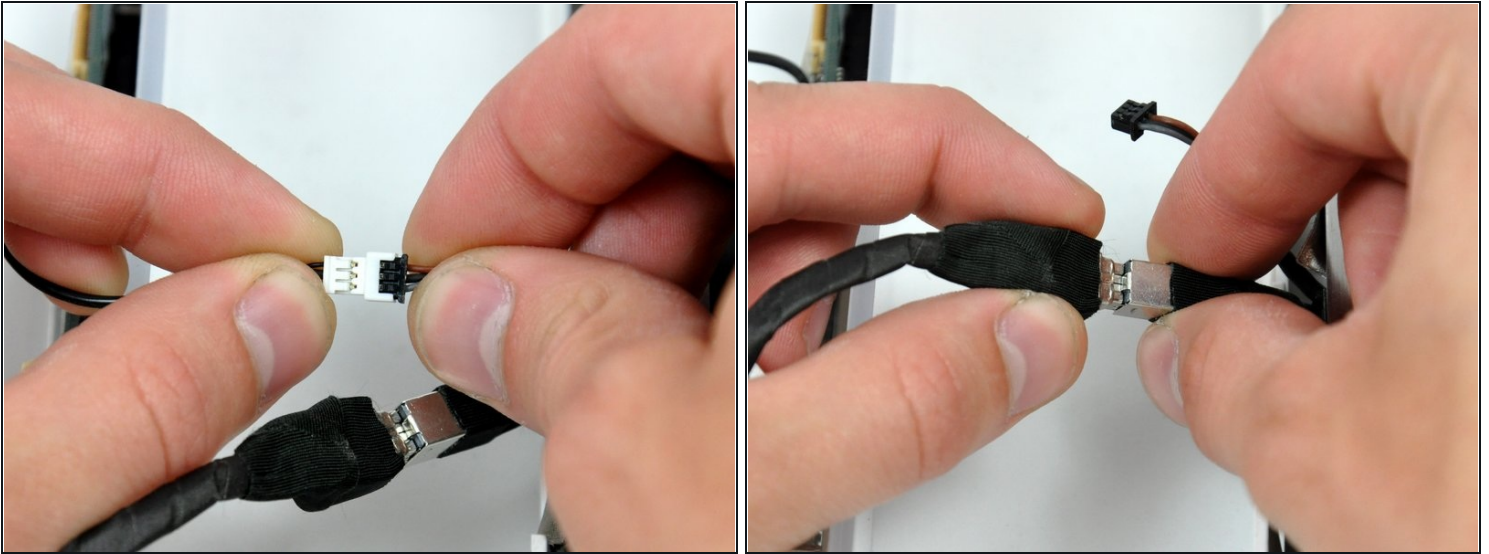
- Lay your iMac stand-side down on a table.
- Lift the front bezel from its lower edge and rotate it away from the rest of your iMac, minding the RAM arms that may get caught.
- Lay the front bezel above the rest of the iMac.

Step 8



- If necessary, remove the piece of kapton tape wrapped around the microphone and camera cables.

Step 9



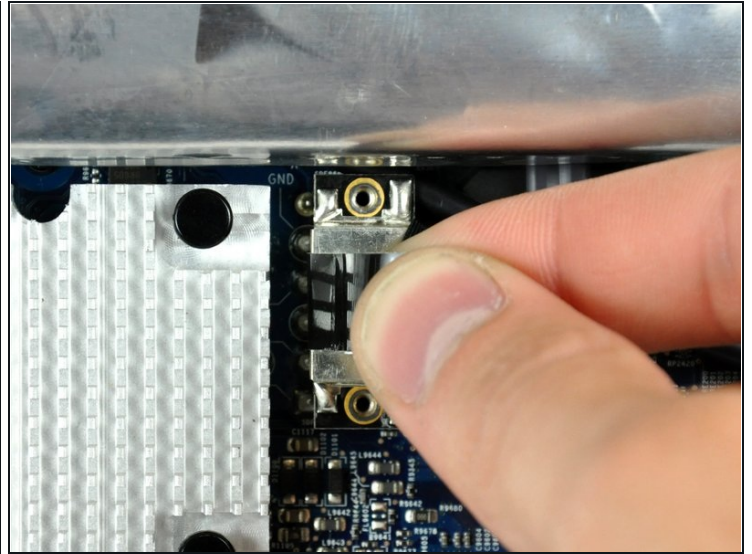
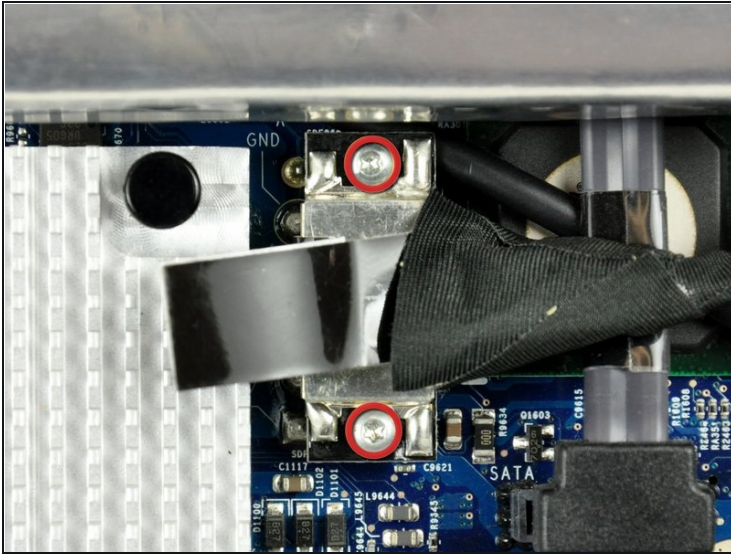
- Disconnect both the camera and microphone cables.

Step 10 — Display



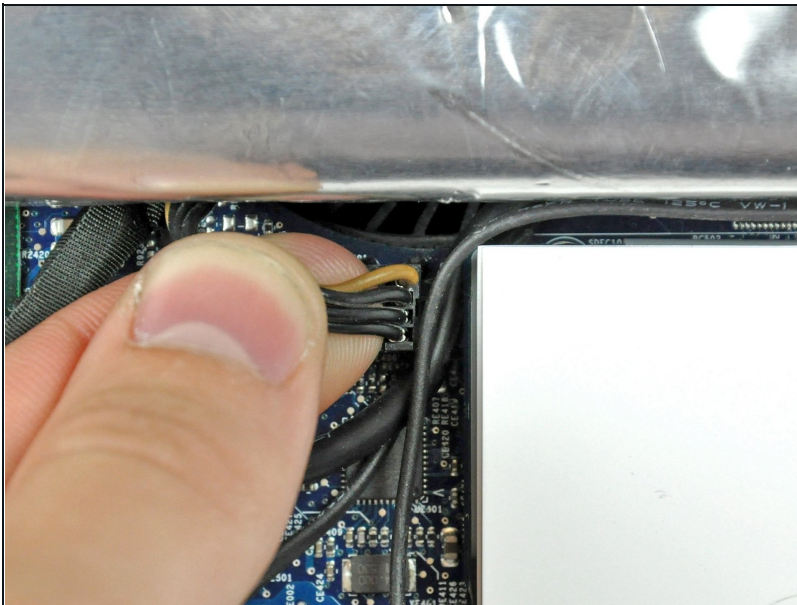
- Peel back the aluminum EMI shield up off the lower three edges of the rear case.
- ① It is not necessary to peel the EMI shield off the display.
- ① We found it helpful to tape the EMI shield up against the display to keep it out of the way.

Step 11



- Remove the two 5 mm T6 Torx screws securing the display data cable to the logic board.
- Using its attached black tab, pull the display data cable connector up off the logic board.

Step 12



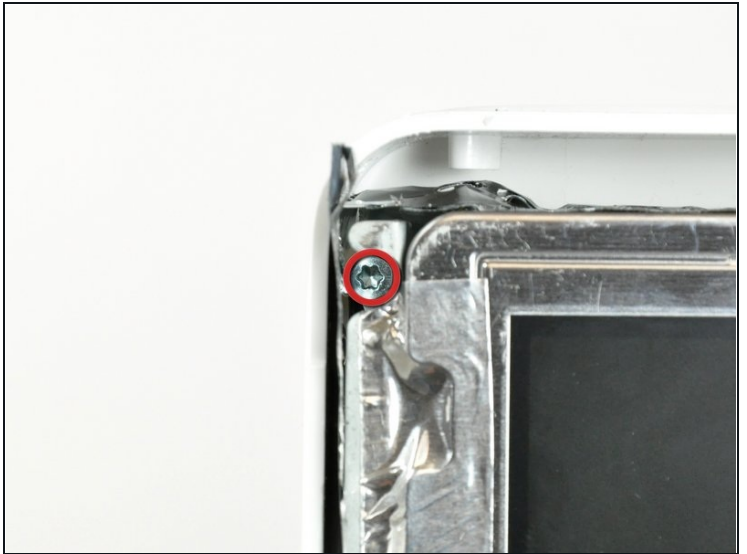
- Pull the inverter cable connector up off its socket on the logic board.

Step 13



- Peel back the aluminum EMI tape from the two vertical edges of the display.
- ☑ During reassembly, it is helpful to use several small strips of tape to hold the EMI shielding along the left and right edges of the display footprint out of the way before lowering the display into the rear case of your iMac.

Step 14



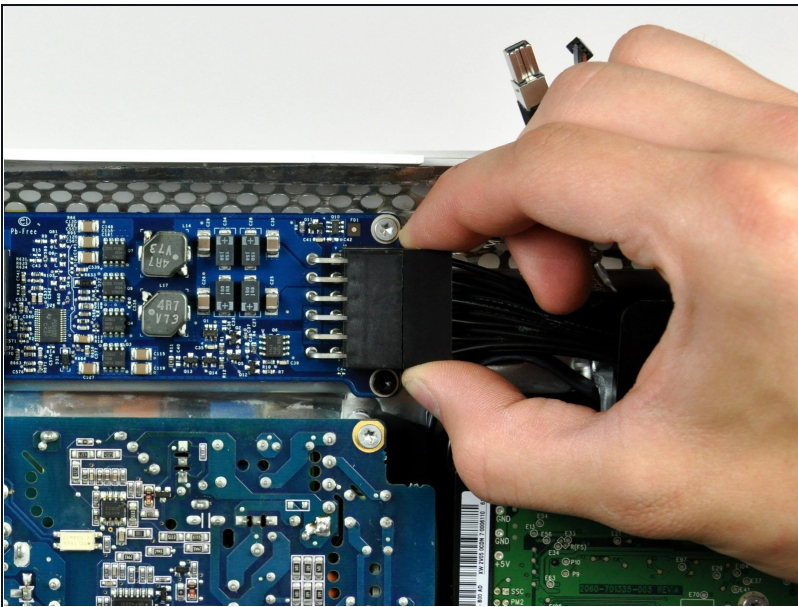
- Remove the four recessed coarse-thread 7.5 mm T10 Torx screws securing the display to the rear case.
- ⓘ These screws are recessed, so a thin screwdriver such as this is essential for removal. Bit drivers tend to be too short for this application.

Step 15



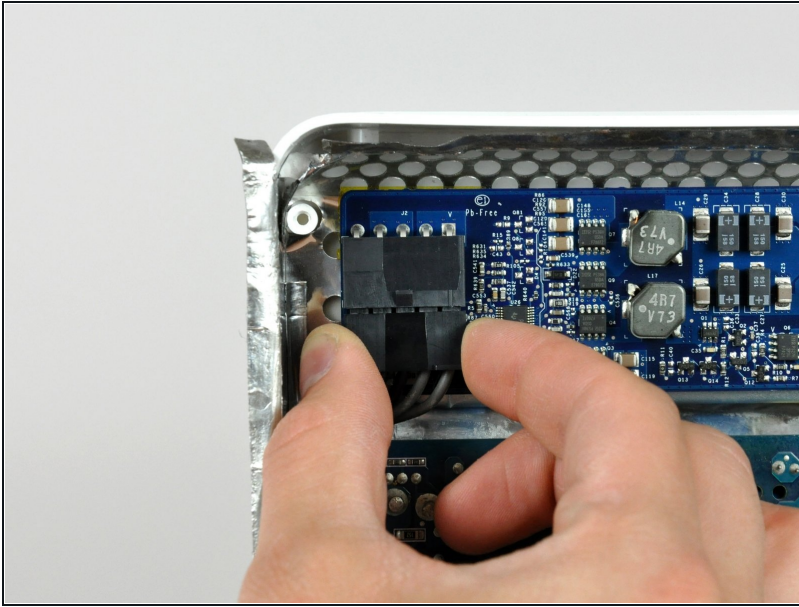
- Lift the display from its lower edge and pull it toward yourself to peel it off the EMI shield attached to its top edge.
- ① Be mindful of any cables that may get caught during removal.

Step 16 — DC to DC Board



- Pull the DC power cable connector away from its socket to disconnect it from the DC to DC board.
- ① Wiggling the connector while pulling it aids in removal.

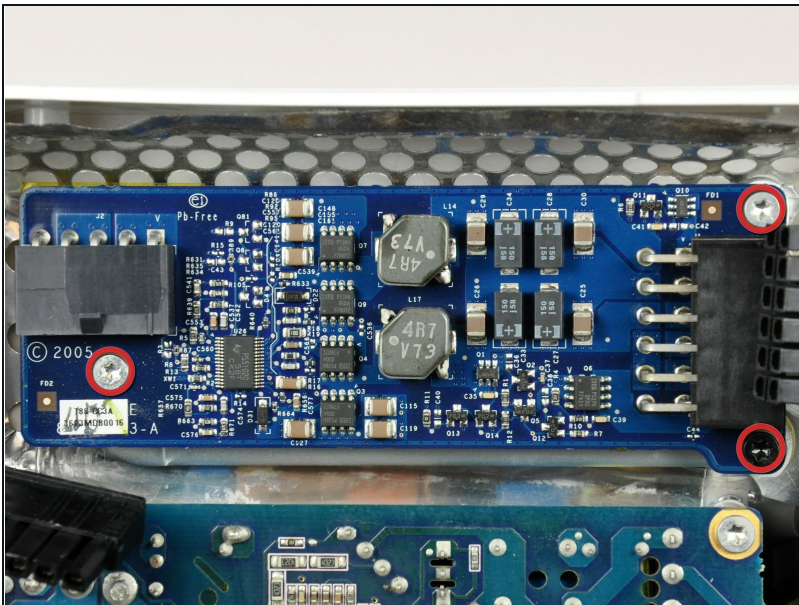
Step 17



⚠ This step brings your hands close to the exposed face of the power supply. **Do not** touch the face of the power supply to avoid a high voltage shock from the many large capacitors attached to the board.

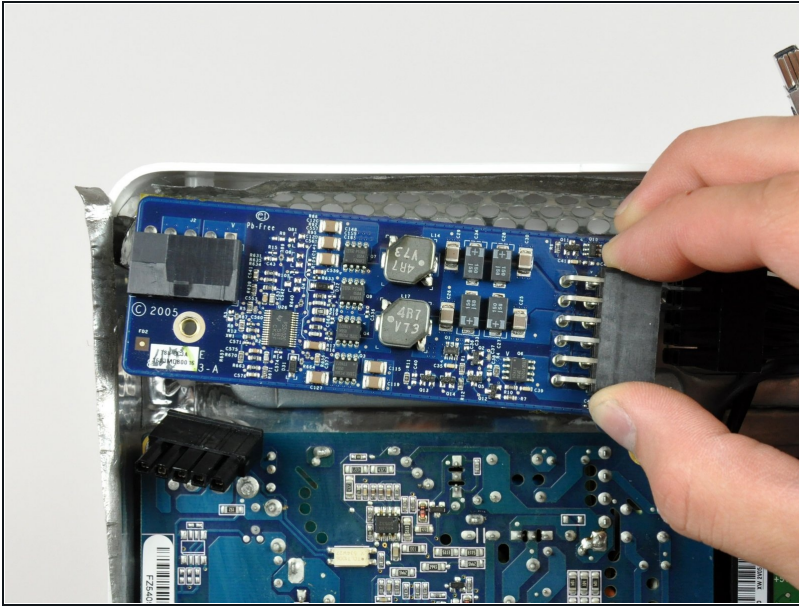
- Pull the power supply cable connector away from its socket to disconnect it from the DC to DC board.
- ① Wiggling the connector while pulling it aids in removal.

Step 18



- Remove the three T10 Torx screws from the DC to DC board.
- ① The short fine-thread screw belongs in the upper right corner and the black coarse-thread screw belongs in the lower right corner of the DC to DC board.

Step 19



- Lift the DC to DC board out of the rear case.

To reassemble your device, follow these instructions in reverse order.