



# Solowheel Original Tire Replacement

How to remove the casing and replace an old or flat tire on the Solowheel Original electric self-balancing unicycle.

Written By: Kevin Looney



## INTRODUCTION

Use this guide to replace an old or flat tire on your Solowheel Original electric self-balancing unicycle.

Before you begin, have a jar or can available to put all of the screws in. It is very important to know where the screws are, as you will need all of them to securely put your unicycle back together.

**If you do not use all of the screws when putting the unicycle back together it poses a safety hazard and could result in injury or death when riding the unicycle.**

After replacing the tire, I suggest pumping up the tire fully and waiting a few minutes to see if there are any air leaks. Once you're sure that the tire isn't defective, go ahead and start the process of putting the unicycle back together.



### TOOLS:

- [6-in-1 Screwdriver](#) (1)
- [Phillips #2 Screwdriver](#) (1)
- [Long shaft Phillips #2 Screwdriver](#) (1)
- [Spoon Tire Iron](#) (1)
- [Bike Tire Pump](#) (1)



### PARTS:

- [16" Bike Tire Tube](#) (1)

## Step 1 — Tire



- Lay the Solowheel down with the side containing the battery facing up.
- ⓘ The power button and charger port are on the same side as the battery. For the Solowheel to be positioned properly, you'll need to have the side with the power button and charger port facing up.

## Step 2



- Using the Philips screwdriver, remove the 4 screws along the right side of the device.

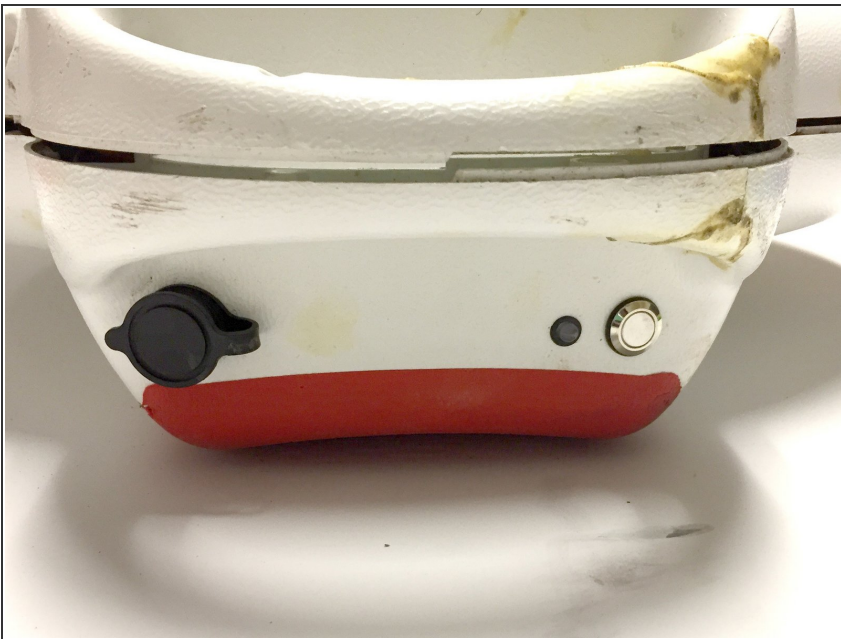


### Step 3



- Using the Phillips screwdriver, remove the screw next to the handle and the two screws on the handle of the device.

### Step 4



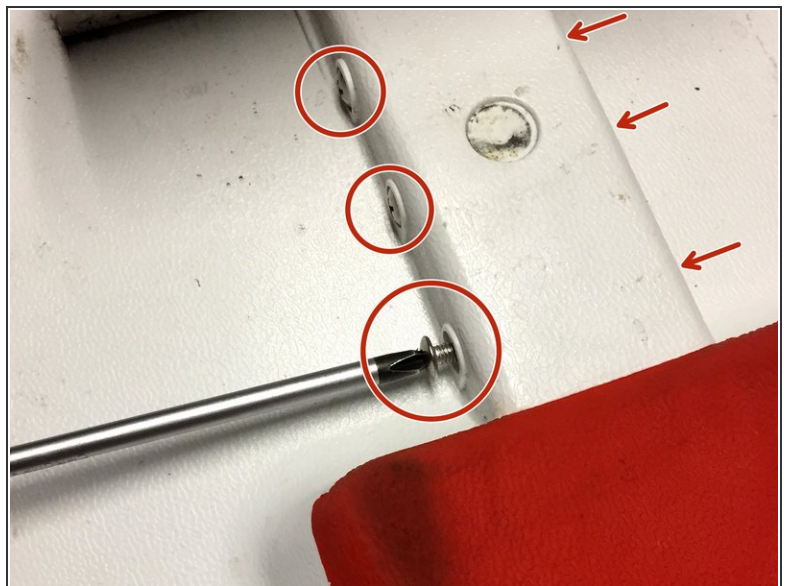
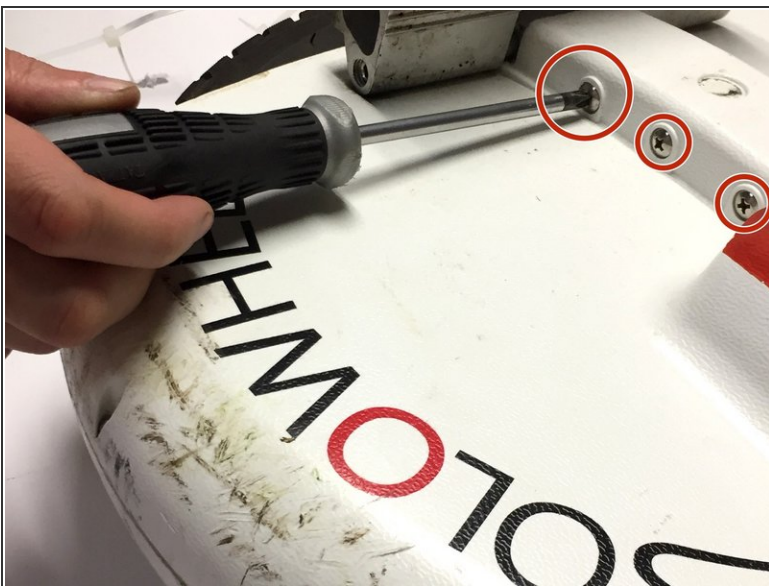
- Without removing the plastic cover, flip over the device.
- ⓘ The side with the power button will now be on the bottom.
- ⚠ The plastic case will be loose, so use caution when turning it over.

## Step 5



- Using the Phillips screwdriver, remove the screws along the right side and handle on this side of the device.

## Step 6



- ① You can use the long shaft Phillips screwdriver for this step if you find it more comfortable.
- Lift the foot pedal and use the Phillips screwdriver to remove the three screws on each side of the raised area of the plastic case. (There are a total of 6 screws to remove.)



## Step 7



- Gently pull the two halves of the plastic case apart.
- Slide the plastic cover in the direction opposite from the pedal.
- Make sure that the case clears the metal foot pedal before fully removing it.

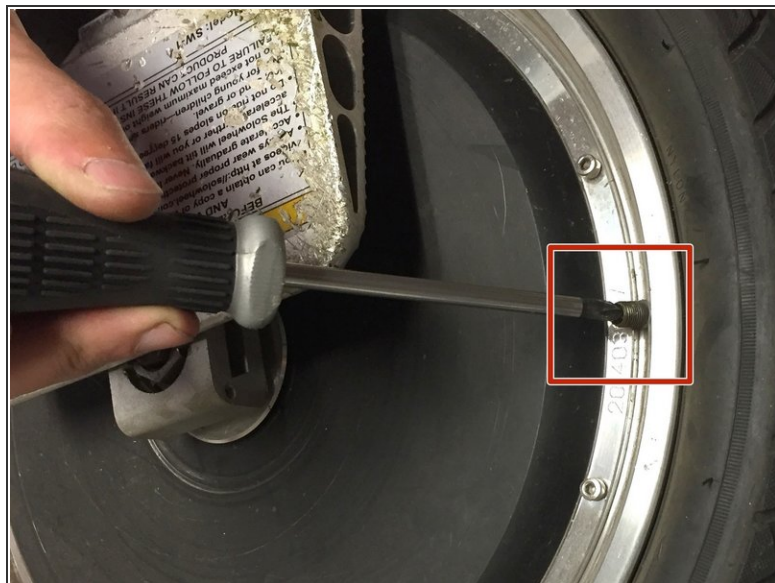
## Step 8



- Now flip over the plastic case so that the two handle sections act as a hinge.

**⚠ Be careful not to pinch any wires when separating the handle section.**

## Step 9



- Remove cap from air nozzle on tire.
- Use the Philips screwdriver to push the air release mechanism in the tire valve to release any excess air from the tire.
- ⓘ Any unpleasant odor coming from the air in the tire is normal.

## Step 10



- Insert the spoon tire iron in between the metal rim and rubber tire.
- Once inserted, tilt the tool back toward the middle of the wheel to loosen the rubber tire from the metal rim. The edge of the rubber tire should now be above the metal rim.
- Insert the flathead screwdriver under the rubber tire to keep the edge in place and then remove the spoon tire iron and re-insert it between the metal rim and rubber tire a couple of inches away from where you first inserted it.
- Repeat this process until the rubber tire comes off of the metal rim.



## Step 11



- Once the rubber tire is loose from the rim, use your hand or the Phillips screwdriver to push the air valve through the hole in the metal rim.
- Reach into the rubber tire and remove the old rubber inner tube.
- Replace with new rubber inner tube.

To reassemble your device, follow these instructions in reverse order.