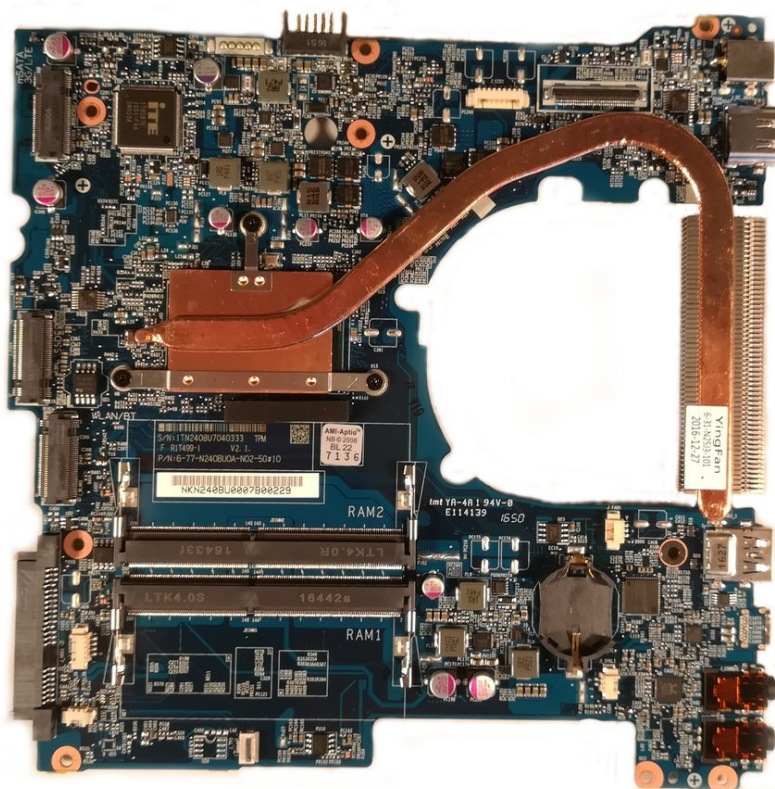




why! N240BU Motherboard Replacement

Written By: Felice Suglia



TOOLS:

Tournevis Cruciforme PH1 (1)

PARTS:

Pièces pour why! N240BU CH (1)

Pièces pour why! N240BU EU (1)

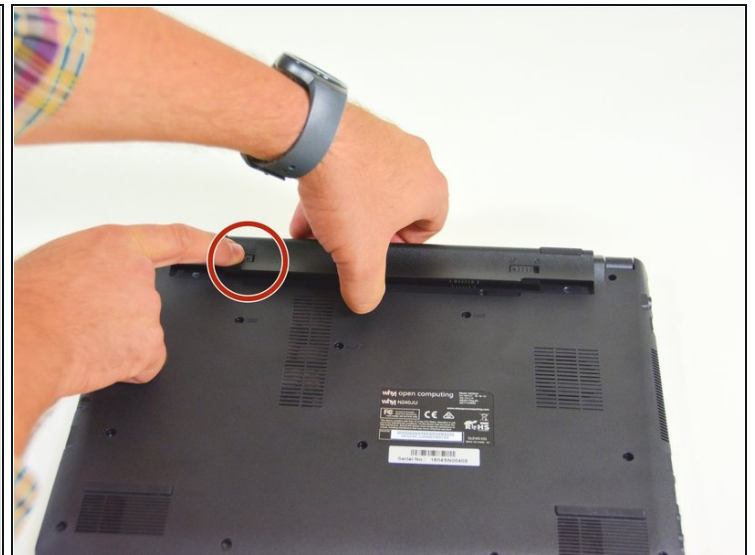
Pièces pour why! N240BU-PRO CH (1)

Pièces pour why! N240BU-PRO EU (1)

Pièces pour why! N240WU CH (1)

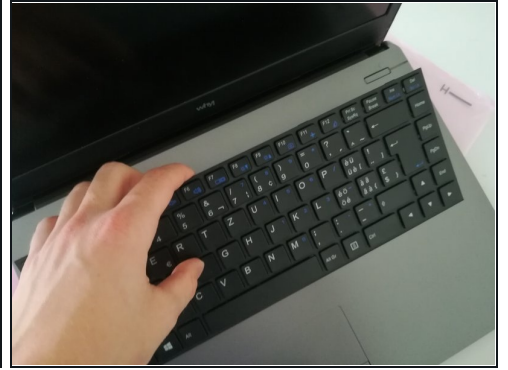
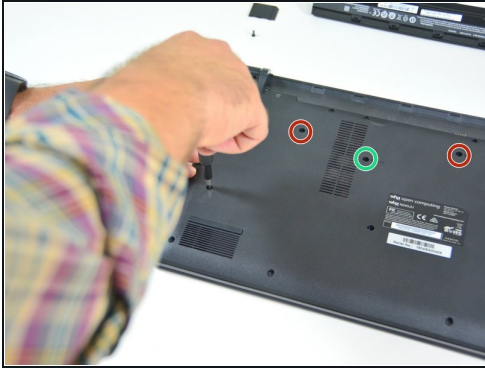
Pièces pour why! N240WU EU (1)

Step 1 — Battery



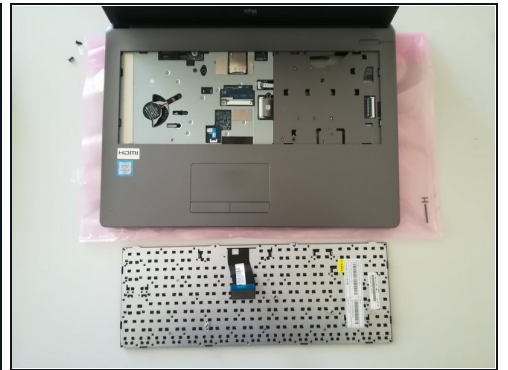
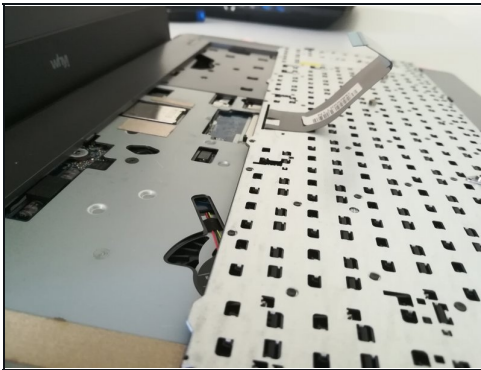
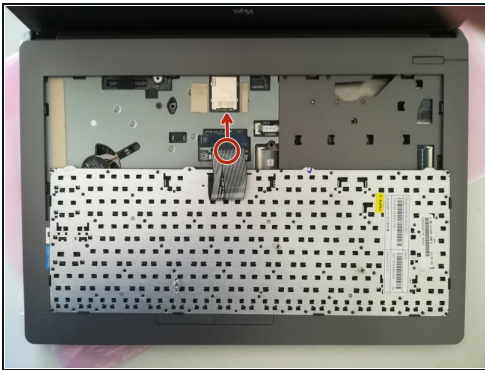
- Start by unlocking the right locking latch.
- Then, by simultaneously unlocking the left latch, lift the battery out of its socket.

Step 2 — The keyboard



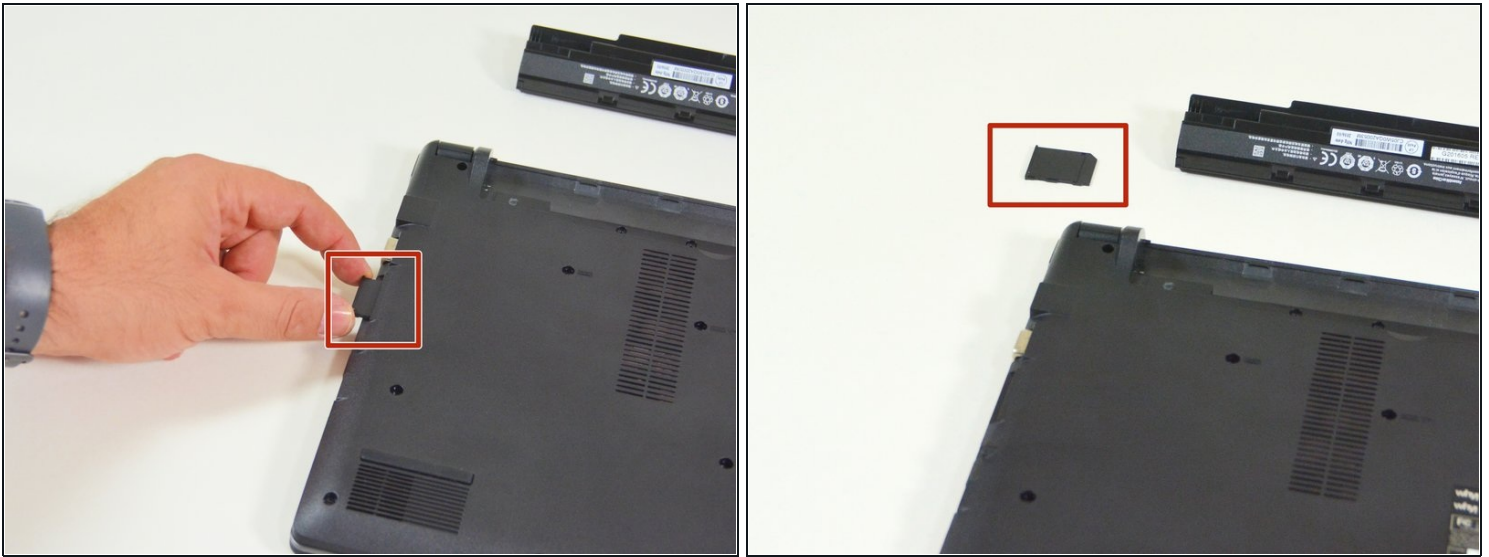
- Unscrew the circled screws in green and red
- Put the computer in the position of the second image while pushing a paper clip into the hole of the screw circled in green until you hear a click
- Lift the keyboard

Step 3



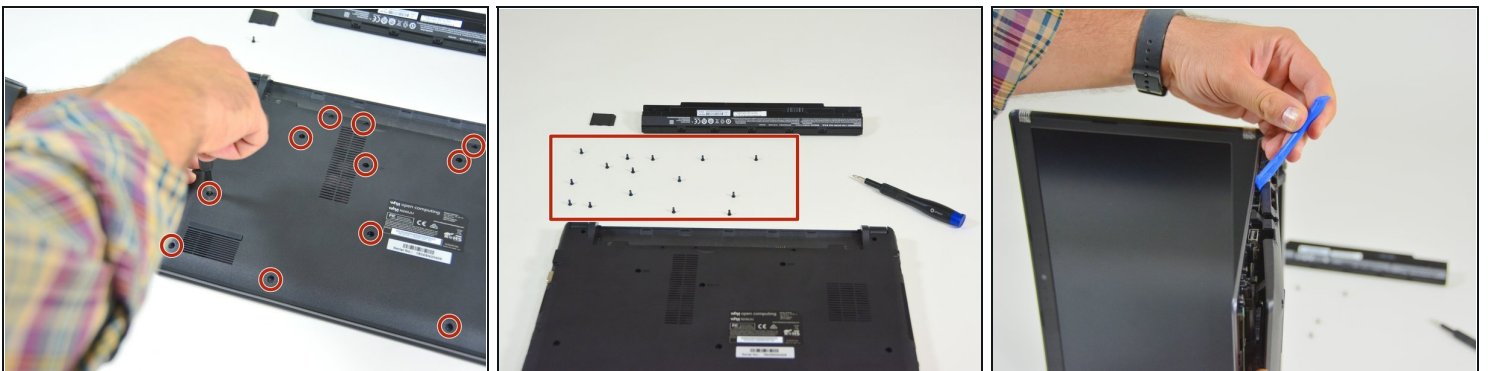
- Disconnect the connector circled in red in the direction of the arrow

Step 4 — Access to main components



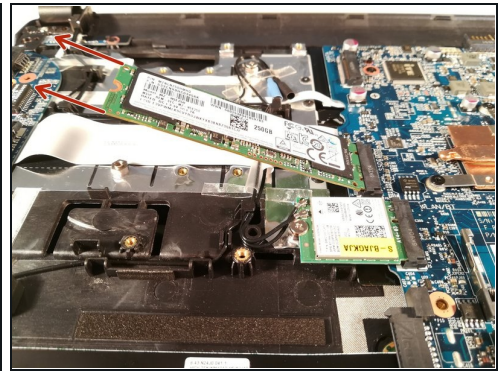
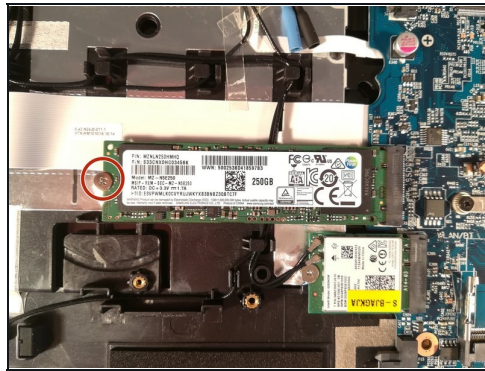
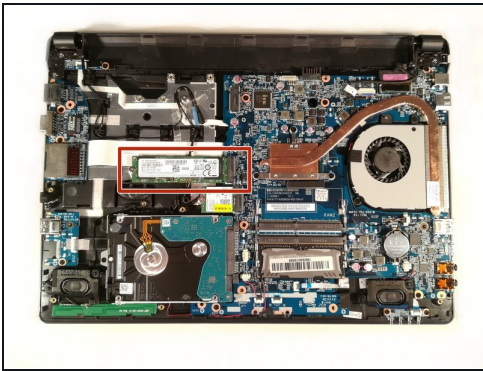
- Begin by spotting the dummy memory card.
- Then, remove it and put it on your workplan.

Step 5



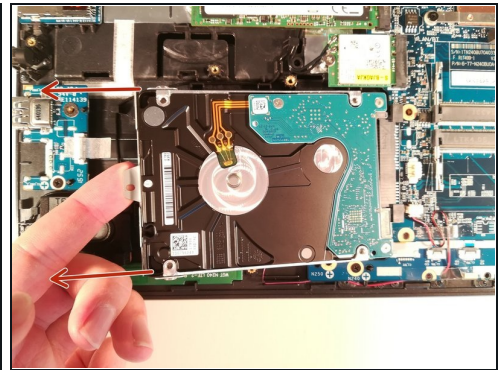
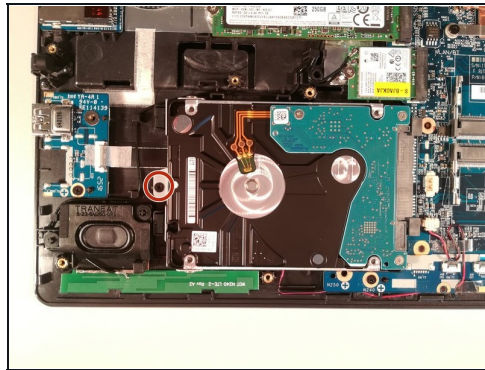
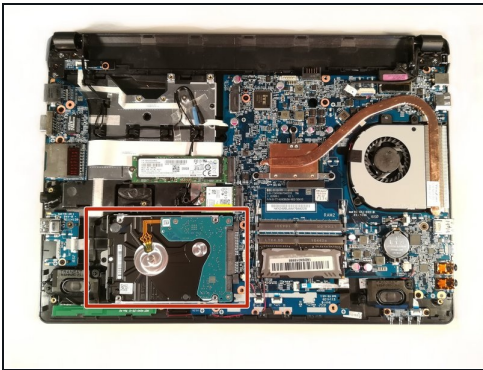
- Locate the 15 screws that hold the bottom cover of the device in place.
- Unscrew them and place them on your work surface.
- Then, un-clip the bottom cover, starting with the side shown in the third picture.

Step 6 — SSD Hard Drive



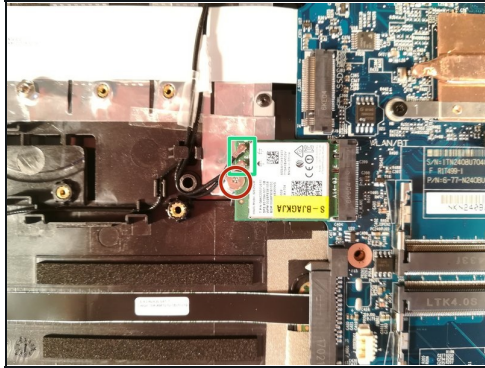
- Unscrew the screw circled in red
- Pull out the M.2 SSD in the direction of the red arrows

Step 7 — Hard Drive (mass storage)



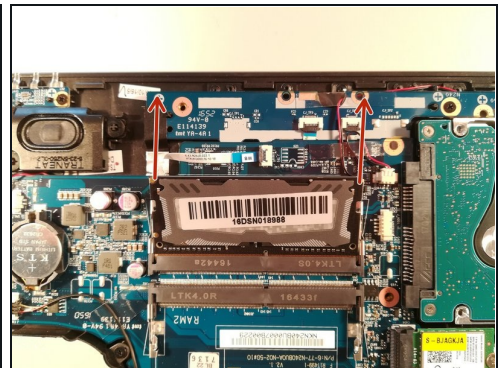
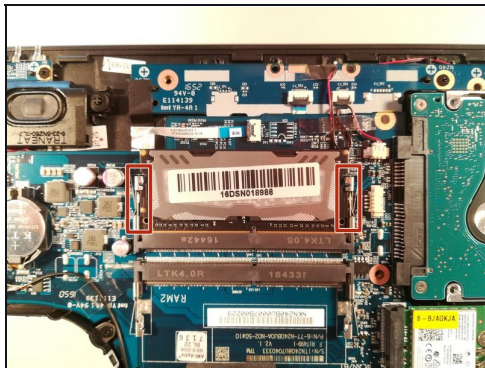
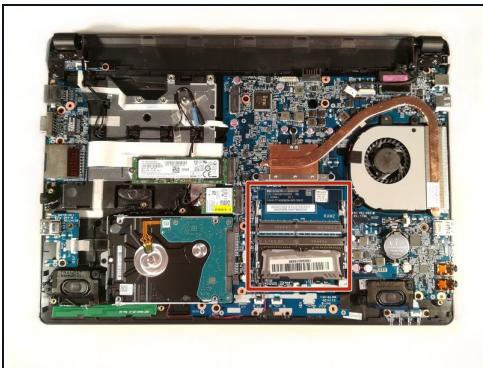
- Remove the screw circled in red
- Lift up the hard drive
- Remove the hard drive in the direction of the red arrows

Step 8 — WLAN Card



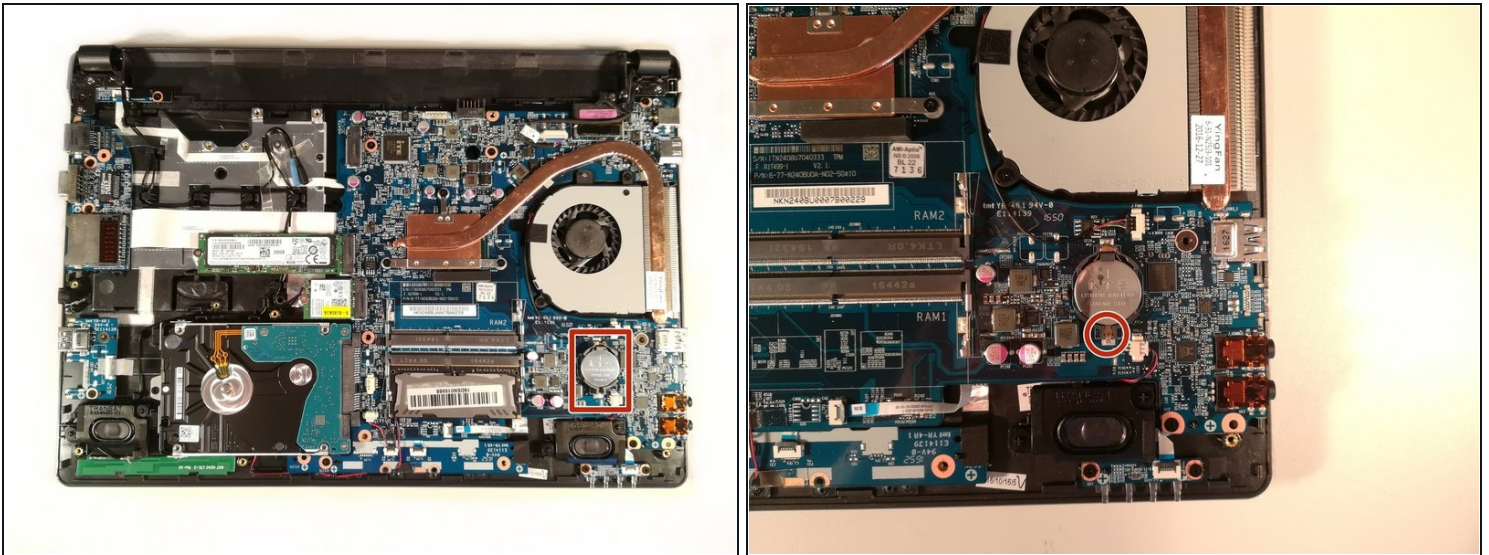
- Remove the screw circled in red
- Disconnect the two connectors marked in green
- Remove the WLAN card

Step 9 — RAM



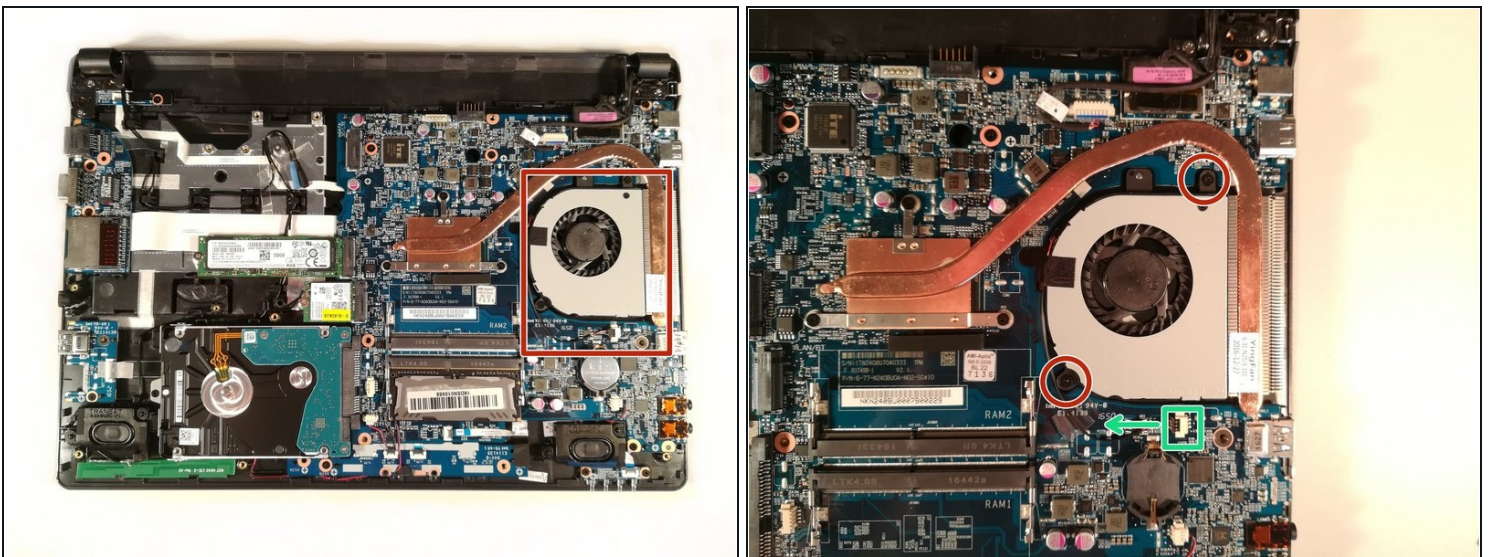
- Press down on the two brackets boxed in red
- Remove the RAM stick in the direction of the red arrows

Step 10 — CMOS Battery



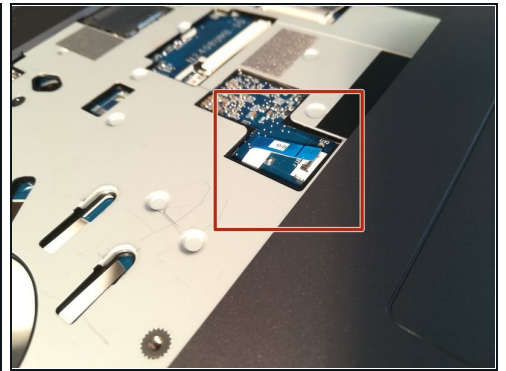
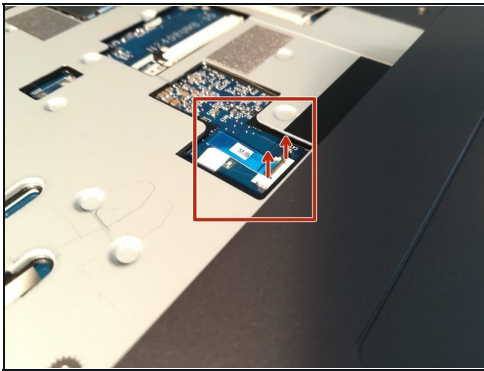
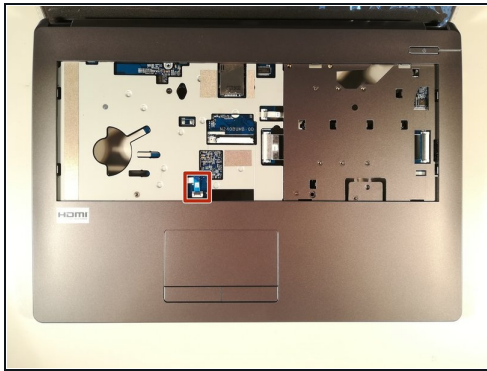
- Press with a screwdriver in the red circled area to spread the base of the battery
- Remove the battery by holding the screwdriver down

Step 11 — Fan



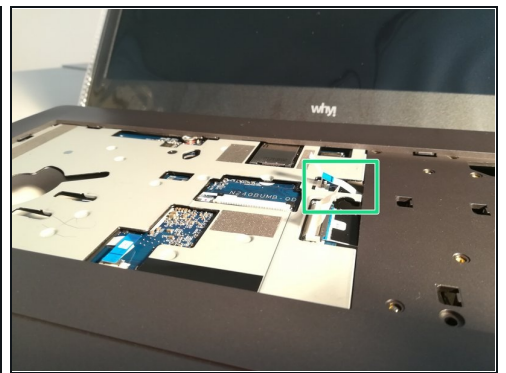
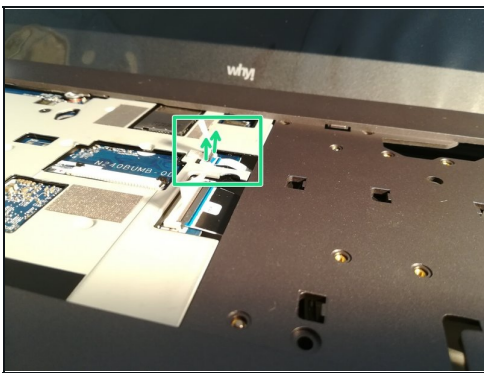
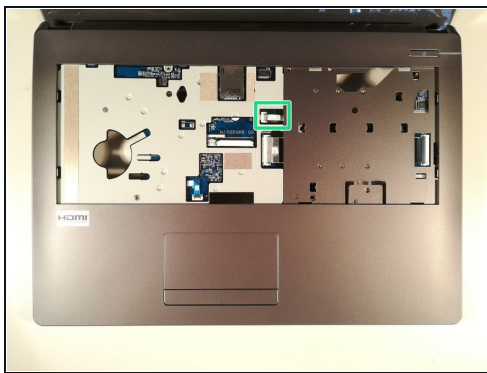
- Remove the two screws circled in red
- Disconnect the connector boxed in green in the direction of the green arrow
- Remove the fan by lifting it up

Step 12 — Motherboard



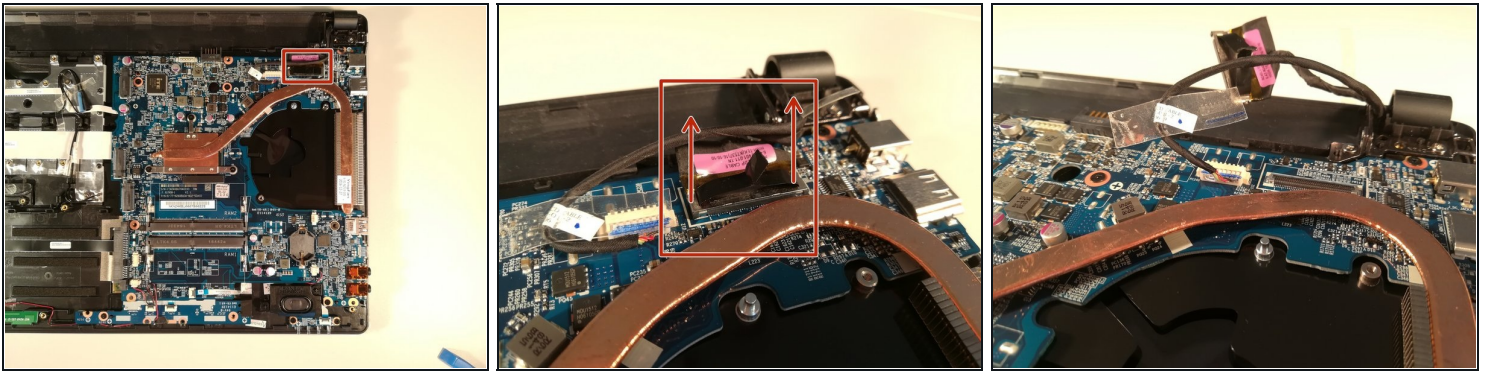
- Lift the retaining flap off of the connector boxed in red.
- Disconnect the connector boxed in red.

Step 13



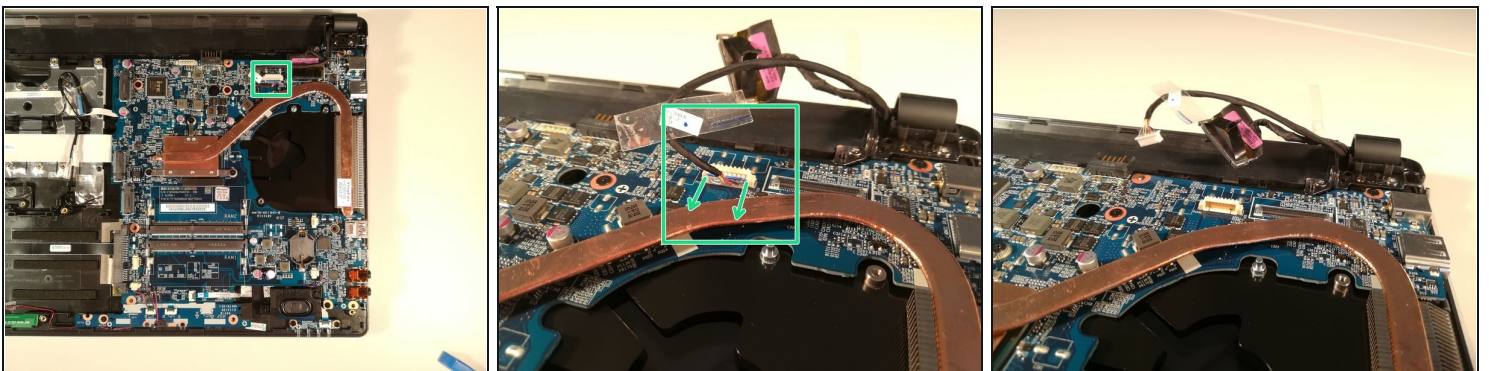
- Lift the flap that holds the connector (framed in green)
- Disconnect the connector (framed in green)

Step 14



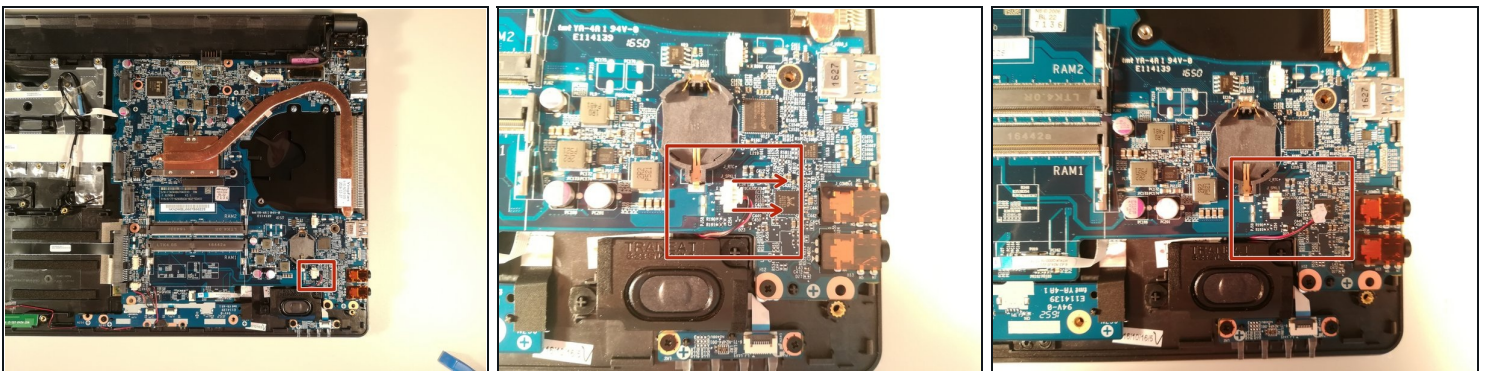
- Disconnect the connector marked in red by lifting it up

Step 15



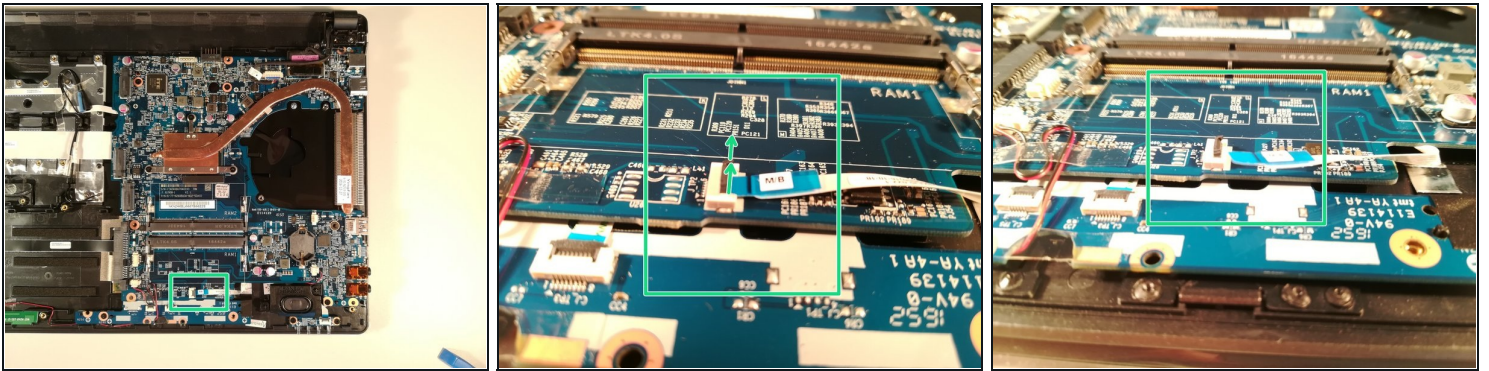
- Disconnect the connector marked in green by pulling it in the direction of green arrows

Step 16



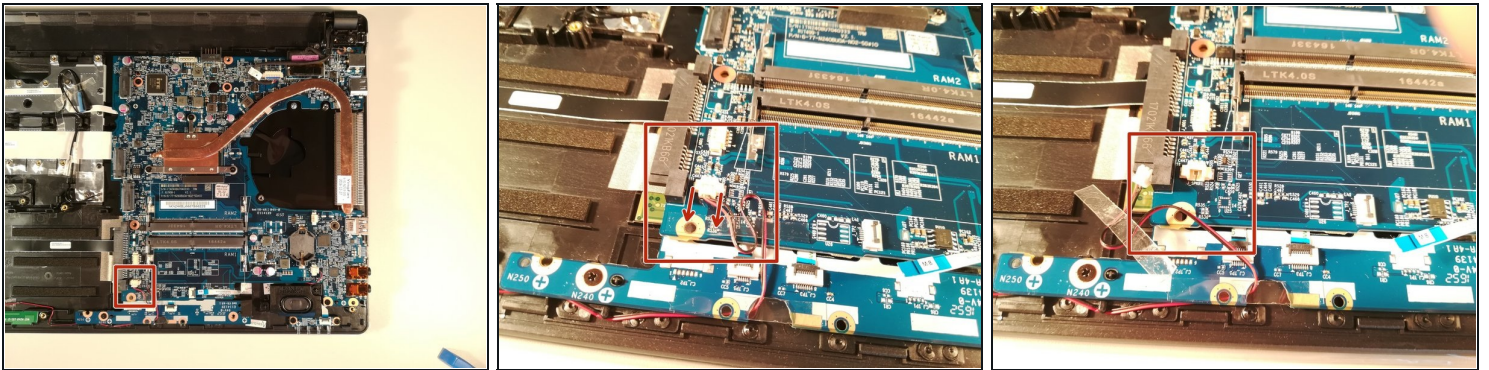
- Disconnect the connector marked in red by pulling it in the direction of the red arrows

Step 17



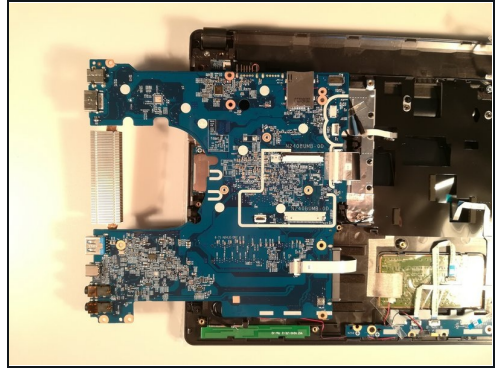
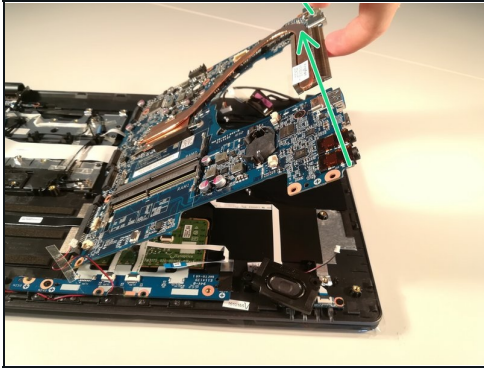
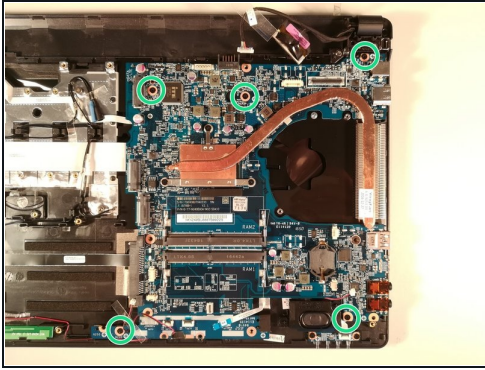
- Lift the black retaining flap that holds the connector marked in green
- Disconnect the connector marked in green

Step 18



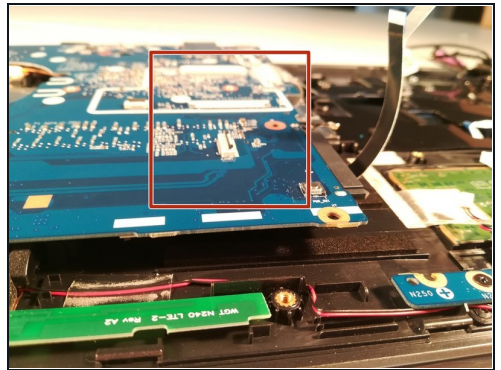
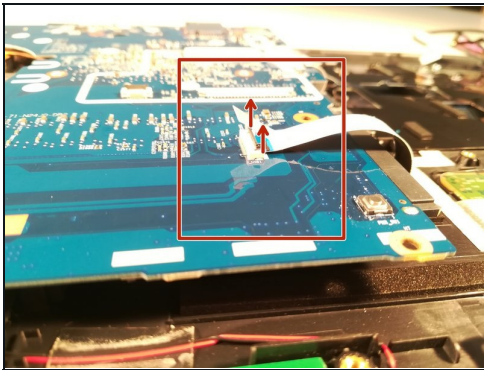
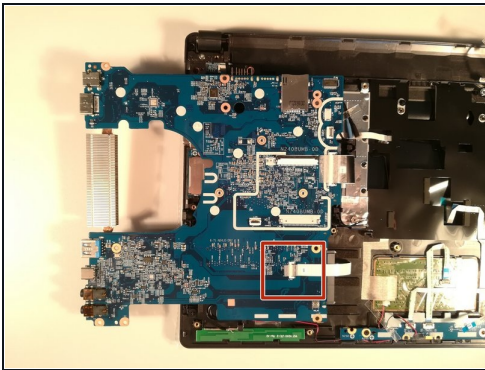
- Disconnect the connector marked in red by pulling it in the direction of the red arrows

Step 19



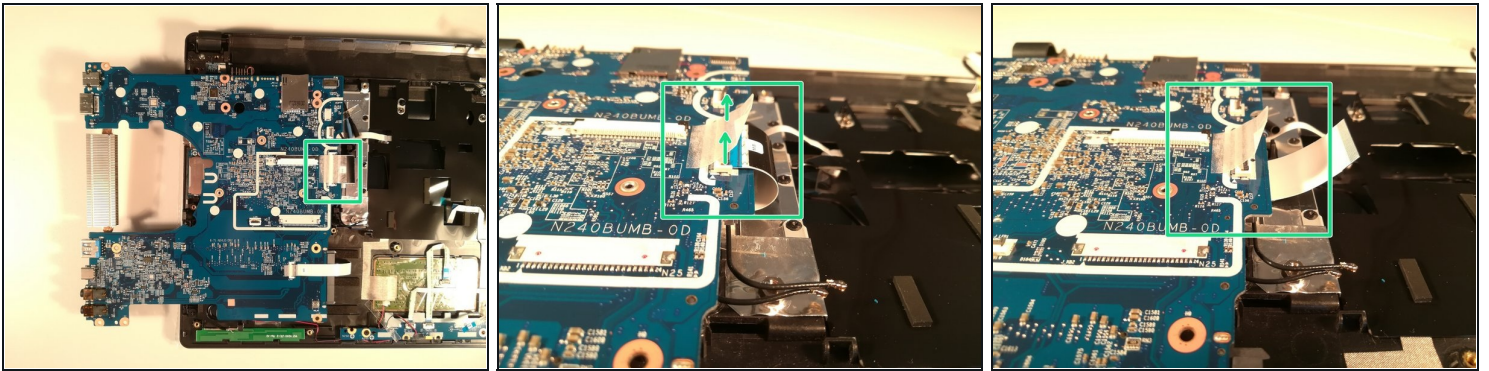
- Unscrew the five screws circled in green
- Lift the motherboard by taking it by the radiator as in the second picture

Step 20



- Lift the retaining flap that holds the connector marked in red
- Disconnect the connector marked in red

Step 21



- Lift the retaining flap that holds the connector framed in green
- Disconnect the connector boxed in green
- Remove the motherboard from the case.

To reassemble your device, follow these instructions in reverse order.