



Disassembling Samsung S730 Logic Board

This is the same camera that had recent LCD issues as well. This is the same procedure for a Samsung S630.

Written By: oldturkey03





TOOLS:

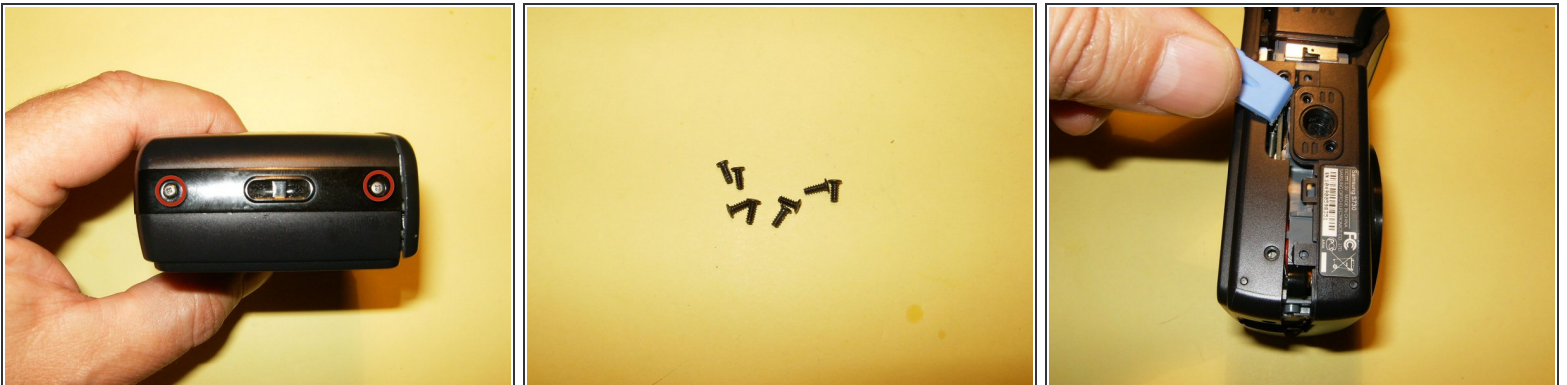
- [Phillips #00 Screwdriver](#) (1)
- [iFixit Opening Tools](#) (1)
- [Soldering Iron](#) (1)

Step 1 — Logic Board



- Remove the batteries, memory card, and wrist strap if so equipped.
- Remove the four screws on the bottom.
- Remove the two screws on the right hand side

Step 2



- Remove the two screws from the left hand side
- The screws are identical in length. No reason to keep them separate
- Split the case from the battery compartment down. You can use an opening tool or your fingernails to accomplish that.

Step 3



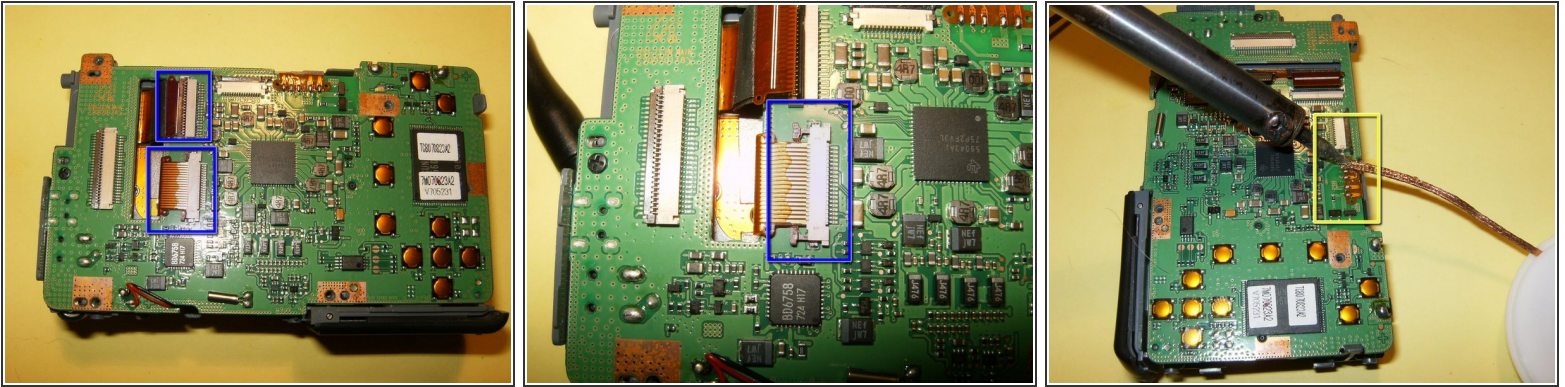
- With the case split, you can see the LCD in its holder. The LCD is simply laid into the holder.
- Gently remove the LCD from the holder and just flip it to the side. Do not remove it yet. You will have to loosen the clip on the connector. Use your fingernails to move it in the opposite direction from the LCD, this will open it up.
- Remove the four screws from the LCD holder.

Step 4



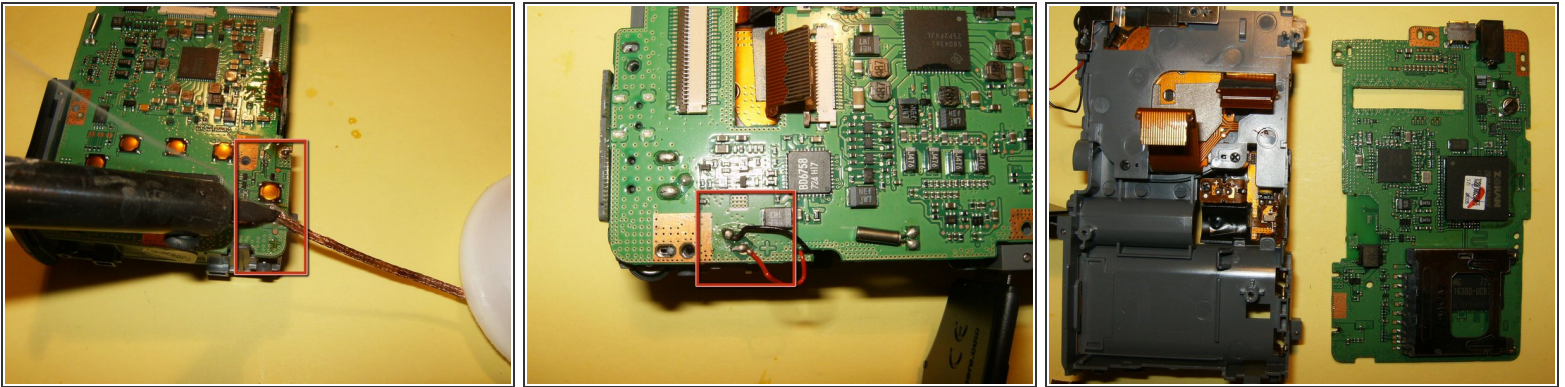
- LCD holder removed from logic board
- disconnect the ribbon cable from the logic board. This one requires to move the brown tabs on the left and right hands side in an upward direction. They should just slide up by about an 1/8th of an inch. this will free the ribbon cable.
- With the ribbon cable disconnected, remove the front case.

Step 5



- Remove the CCD and the lens ribbon cable from the connectors.
- To release the CCD cable, gently slide the brown clips on either side to the left. This will release the cable.
- Desolder the connector from the top PCB. Use a soldering wick and flux to make the task easier.

Step 6



- Desolder the battery connectors.
- Desolder the black and red wire.
- Remove the logic board from the midframe.

To reassemble your device, follow these instructions in reverse order.