



Fugoo Style XL Midwoofer Replacement

The Fugoo Style XL has two midwoofers connected...

Written By: James Gifford



INTRODUCTION

The Fugoo Style XL has two midwoofers connected to the casing that can be removed and replaced.



TOOLS:

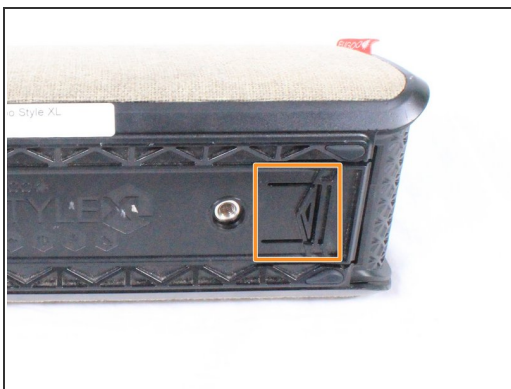
- [Tweezers](#) (1)
 - [TR9 Torx Security Screwdriver](#) (1)
 - [64 Bit Driver Kit](#) (1)
-

Step 1 — Fabric Case



- Using your hand, unscrew the large screws underneath the speaker.

Step 2



- Using your hand, gently lift the large plastic tab secured to the rubber holding.
- After lifting the tab, slide the speaker out of its case.

⚠ Ensure the tab is lifted only slightly above the rubber holding. Bending the plastic tab too far could result in damage to the case.

Step 3 — Midwoofer



- There are 8 screws (4 on each side) holding covers that conceal the bass speakers. Remove these 3mm screws using a #2.0 Hex screwdriver.

Step 4



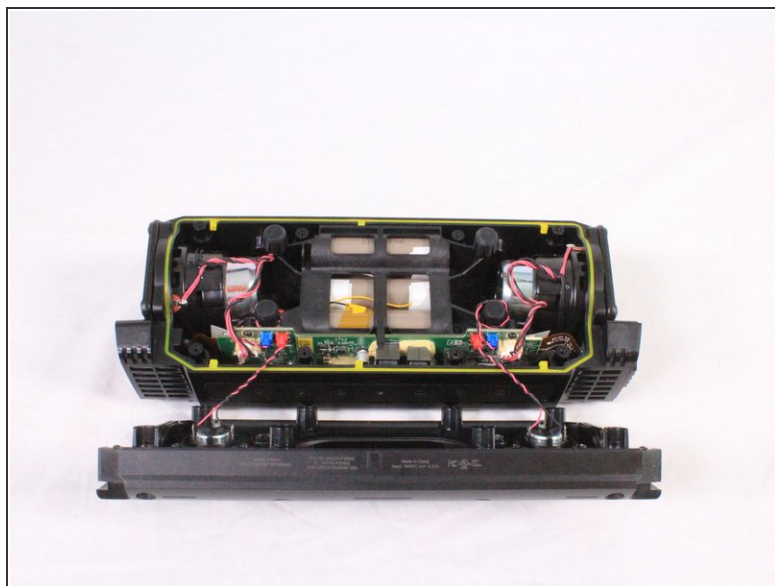
- Using your hand, pull the covers away from the speaker.

Step 5



- Using a #2.0 Hex screwdriver to unscrew the 8 12mm screws depicted.

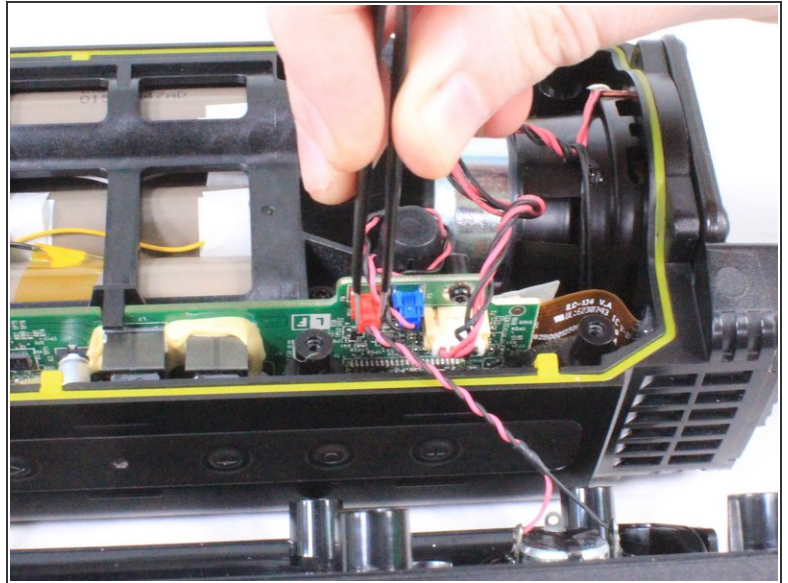
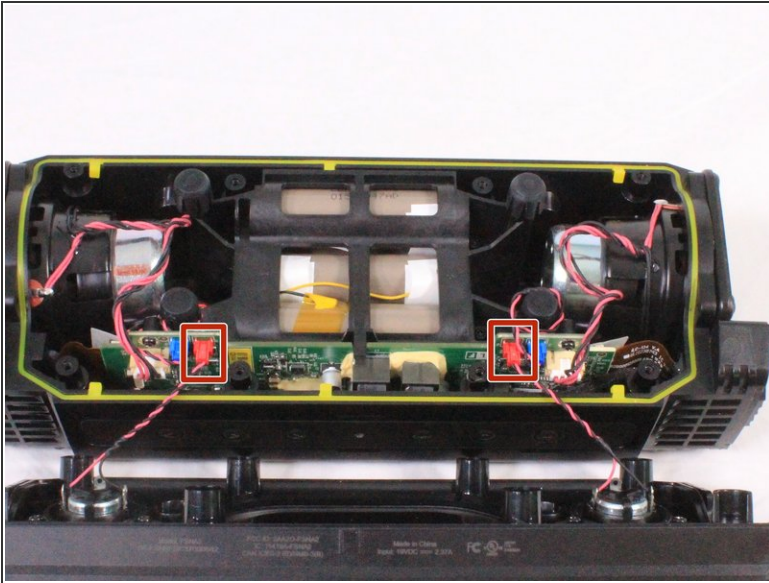
Step 6



- Gently pull apart the front casing from the back casing.

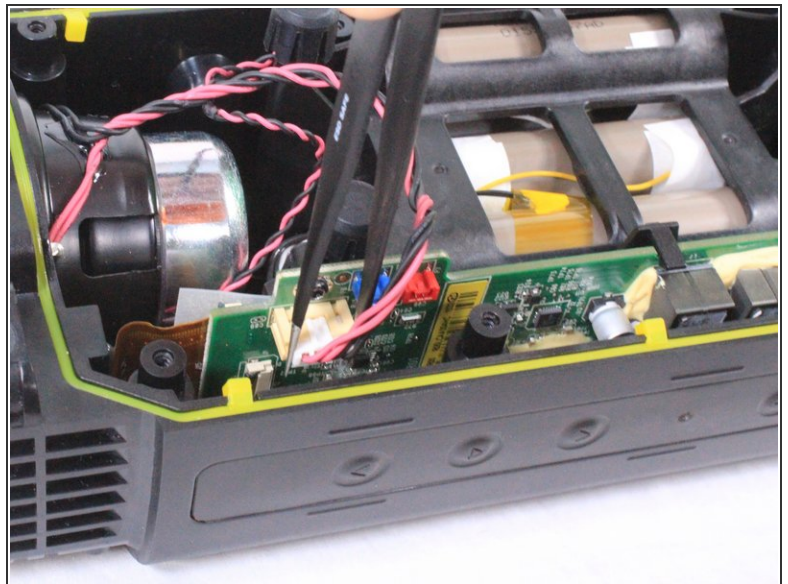
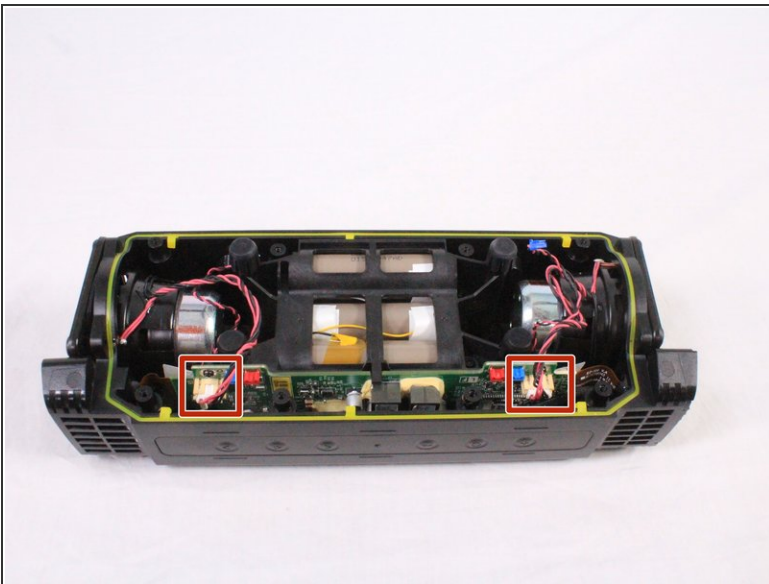
⚠ Speakers on the front casing have wires directly connected to the motherboard. Pulling off the casing with force will result in damage.

Step 7



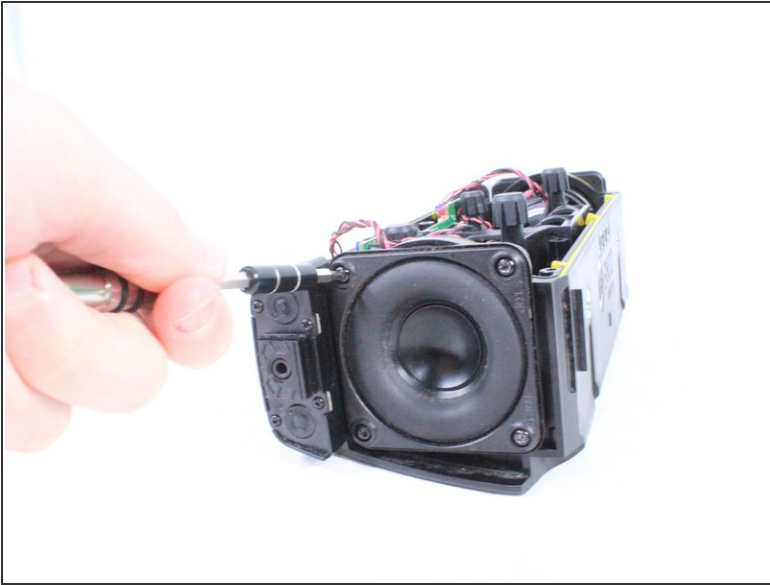
- Using a pair of tweezers or your hand, carefully remove the red bundled cable connectors from the motherboard.
- When the red bundled cable connectors are disconnected, set the outer casing aside.

Step 8



- Carefully untangle and remove the white bundled cable connectors from the motherboard.

Step 9



- Using a T9 screwdriver, remove the 8 screws (4 on each speaker) surrounding the midwoofers.
- Using your hand, carefully remove the midwoofers.

To reassemble your device, follow these instructions in reverse order.