



Archived

# DualShock 4 CHU-ZCT2U Charging Port Replacement

This guide will show you how to disassemble...

Written By: David Seale



# INTRODUCTION

This guide will show you how to disassemble your DualShock 4 CHU-ZCT2U controller and access the charging port for replacement.

## TOOLS:

[iFixit Opening Tool](#) (1)  
[Phillips #00 Screwdriver](#) (1)  
[Tweezers](#) (1)

## PARTS:

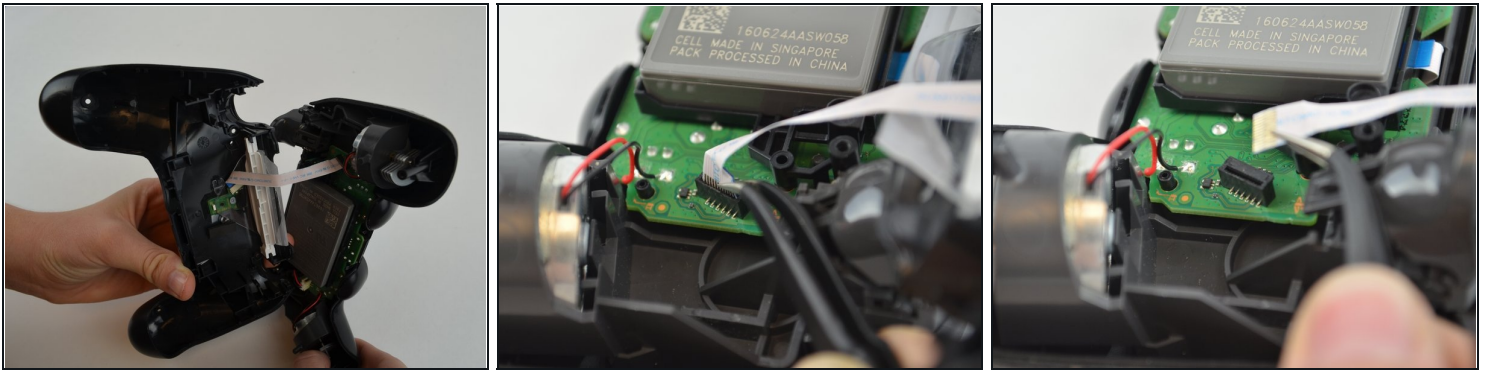
[PlayStation 4 Controller Charging Assembly \(JDS-040\)](#) (1)  
[DualShock 4 Controller Charging Assembly \(JDS-055\)](#) (1)  
[DualShock 4 Controller Charging Assembly \(JDS-050\)](#) (1)

## Step 1 — Outer Shell



- Unscrew the four 6.5mm screws, using a Phillips-Head screwdriver.
- Pry the two halves of the shell apart using a plastic opening tool.
- ① Be careful, as there will be a ribbon connecting the inner workings of the controller. It will not separate into two parts just by pulling apart the shell.

## Step 2



- Pull the ribbon cable out of the motherboard port to fully separate the two halves, using a pair of tweezers.

## Step 3 — Charging Port



- Pull the ribbon cable from the charge port, using a set of tweezers.

## Step 4



- Grip the right hand corner of the opaque white piece with a pair of tweezers, and pull it upwards to remove it.

## Step 5



- Lift the clear plastic piece up by its right hand corner.
- Pull it to the right to remove the bottom left hand corner from the groove.
- Remove the clear plastic piece. It pushes in easily.



## Step 6



- Peel off the black sticker on the charge port, using a pair of tweezers.
- Unscrew the 4.50mm screw in the center of the port chip, using a Phillips-Head screwdriver.
- Pull the charging port out with a pair of tweezers.

---

To reassemble your device, follow these instructions in reverse order.